



NEWINGTON
LONDON

1 Bedrooms

Apartment

Located in London

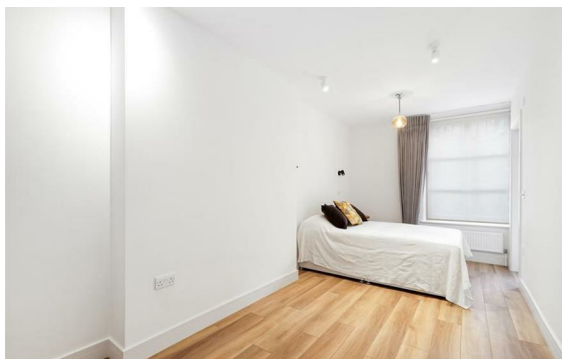
£675 Per Month



info@newingtonstates.com

<http://www.newingtonstates.com>

020 7724 2233



NEWINGTON LONDON

60 Upper Montagu Street

London

W1H 1SN

020 7724 2233

info@newingtonstates.com

Newingtons are delighted to present you this well presented one bedroom apartment to rent in the heart of Paddington. Situated within a popular development with a porter and offering over 570 square feet of lateral living space. Accommodation comprises a bright, reception room, main bedroom with built in storage, separate kitchen and bathroom with bath and shower.

Ideally located within close proximity of both Paddington and Marble Arch Underground stations and a number of local amenities. Features include neutral decor, high ceilings and wood floors throughout. EPC RATING: C

Energy Efficiency Rating: D

Agents Note: Whilst every care has been taken to prepare these particulars, they are for guidance purposes only. All measurements are approximate and are for general guidance purposes only and whilst every care has been taken to ensure their accuracy, they should not be relied upon and potential buyers/tenants are advised to recheck the measurements.

<http://www.newingtonstates.com>