



## Swan Street, TW7

£360,000

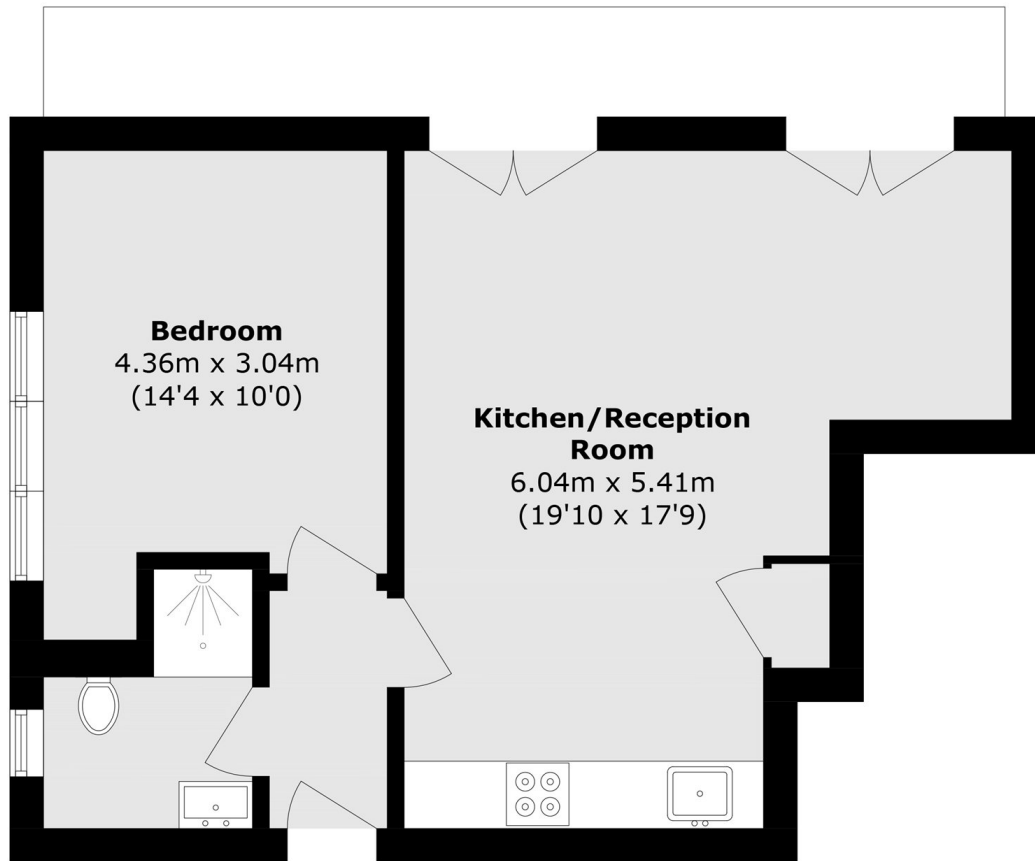
A beautifully presented one bedroom riverside apartment situated on the ground floor and finished to an exceptional standard throughout. The property boasts a generous open-plan kitchen, living and dining area, a well proportioned double bedroom and a modern bathroom. The property also includes direct access to a terrace with steps leading down to the river, an allocated parking space with overflow parking also available. The property also benefits from a long lease and share of the freehold.

Ashby House sits on the banks of the River Thames within Old Isleworth with tow path walks to Richmond, St Margarets village and Twickenham riverside. South Street with its popular cafes and restaurants is also close by. St Margarets, Isleworth and Richmond Stations are all nearby. There are plenty of bus routes close to hand.

### Features

- Riverside Development
- Large Open-Plan Living
- One Double Bedroom
- Luxury Bathroom
- Beautifully Presented
- Allocated Parking

# Swan Street, Isleworth, TW7



Total area (approx.): 45.3 sq. m (487.6 sq. ft)