



**Guide Price**

**£270,000**

**Freehold**

2x  1x  1x 

**Chevers Pawen,  
Basildon, Essex, SS13**

**OVER 60?**

Secure this property  
for up to **59% less!**

 **DOUGLAS  
ALLEN**  
Helping you move forwards



## Main features

- Close to transport links
- Close to local amenities
- In catchment area for local desirable schools
- Chain free
- Private rear garden

## Accommodation

### GROUND FLOOR

Entrance Hallway  
 Kitchen/Diner: 21'11 x 9'4 (6.43m x 2.85m)  
 Lounge: 15'0 x 11'9 (4.58m x 3.58m)  
 Study

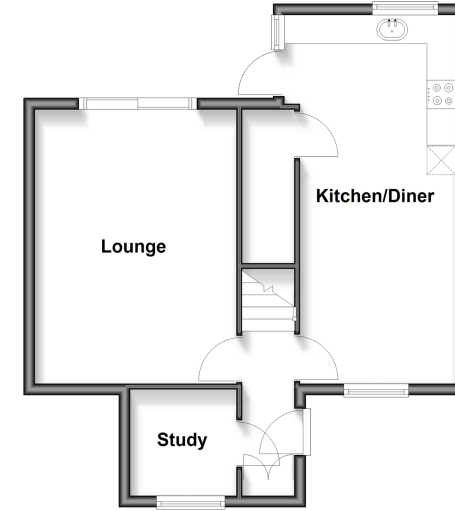
### FIRST FLOOR

Landing  
 Bedroom 1: 15'1 x 12'0 (4.60m x 3.66m)  
 Bedroom 2: 12'7 x 9'1 (3.84m x 2.77m)  
 Bathroom  
 Separate WC

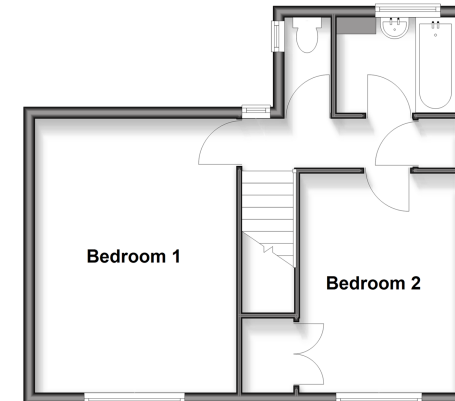
### OUTSIDE

Rear Garden  
 Front Garden

**Ground Floor**  
 Approx. 46.0 sq. metres (495.1 sq. feet)



**First Floor**  
 Approx. 40.7 sq. metres (438.0 sq. feet)



**Call Basildon - 01268 293993 ■ [douglasallen.co.uk](http://douglasallen.co.uk)**

■ Through a Homewise Home For Life Plan people aged 60+ can secure this property for up to 59% less, by purchasing a Lifetime Lease



50509479/20260328/MB/AA