



WYNDHAM ROAD, EAST HAM  
Offers In Excess Of £575,000 Freehold  
4 Bed House

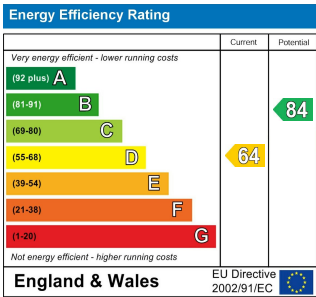
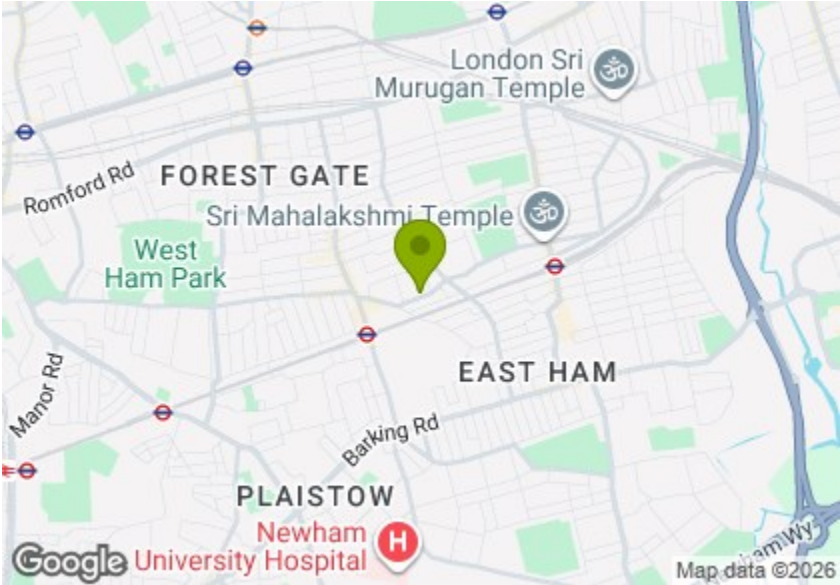


Features:

- Victorian End Terrace House
- Freehold
- Four Bedrooms
- Two Bathrooms + WC
- Close to Plashet Park
- Mature Garden With Decking Area
- Close to Upton Park Station
- Converted Loft

This neatly presented Victorian end-terrace extends across three floors, including a converted loft that adds useful flexibility to the layout. With four bedrooms and two bathrooms, the home is thoughtfully arranged, while the west-facing garden provides a welcome outdoor element. The freehold setting adds long-term appeal, complemented by the home's position close to Plashet Park for easy access to open green space. Upton Park Station is close at hand, making this a well-connected period property with a strong sense of presence and everyday appeal.

REQUEST A VIEWING  
0203 397 2222



E11, E7, E12 & E15  
hello11@stowbrothers.com  
0203 397 2222

E4 & N17  
hello4@stowbrothers.com  
0203 369 6444

E17 & E10  
hello17@stowbrothers.com  
0203 397 9797

E18 & IG8  
hello18@stowbrothers.com  
0203 369 1818

E8, E9, E5, N16, E3 & E2  
hellohackney@stowbrothers.com  
0208 520 3077

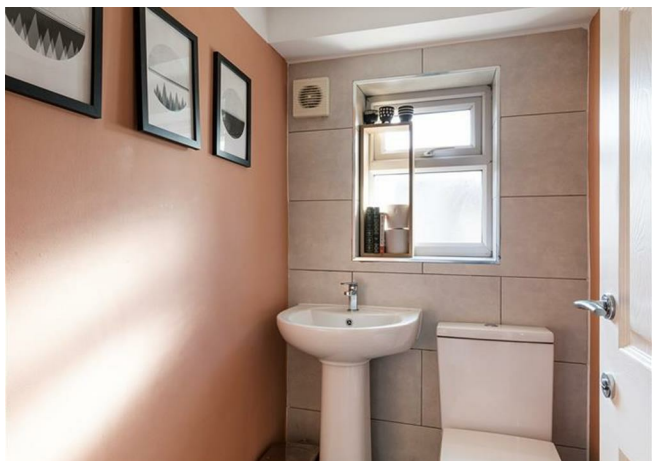
New Homes  
newhomes@stowbrothers.com  
0203 325 7227

Investment & Development  
id@stowbrothers.com  
0208 520 6220

Property Maintenance  
propertymanagement@stowbrothers.com  
0203 325 7228

STOWBROTHERS.COM  
@STOWBROTHERS





REQUEST A VIEWING  
0203 397 2222

#### IF YOU LIVED HERE...

On arrival, the hallway offers a welcoming introduction, with wood flooring running through much of the ground floor to create a sense of continuity between the main living areas. At the front, the reception room is shaped around a wide bay window, with proportions that feel well balanced and inviting. To the rear, a second reception room lends itself easily to dining and entertaining, with built-in storage providing a considered backdrop and a window overlooking the garden. From here, the kitchen sits to the rear, enjoying good natural light and direct access outside. There is compelling potential, subject to the usual consents, to open these areas into a generous open-plan layout, allowing the kitchen and living areas to draw naturally outdoors.

Beyond, the garden unfolds from a decked seating area into a lawn framed by established planting and mature trees. It offers a sense of seclusion and a variety of spots to enjoy outdoor dining, quiet moments and seasonal colour. On the first floor, two bedrooms are accompanied by the main bathroom. The larger bedroom sits to the front and includes built-in wardrobes along one wall, while the second bedroom looks out to the rear and enjoys a peaceful outlook. Nearby, the bathroom is finished with contemporary tiling and includes a bath with an overhead shower, with an additional separate WC positioned alongside. The top floor adds further versatility to the arrangement with two bedrooms

and a bathroom. One bedroom is enhanced by a skylight and a rear-facing window while the other benefits from dual-aspect windows and views across surrounding rooftops. Completing this level, the bathroom features clean-lined tiling, a bath and a skylight overhead. The surrounding neighbourhood brings together a lively mix of everyday convenience and local character. Green Street is close by, known for its shops, cafés and relaxed spots for coffee, brunch and light bites. The Boleyn Tavern, admired for its carefully restored Victorian interiors and characterful detailing, is a popular local for craft beers and informal dining. Nearby, Plashet Park provides a welcome stretch of open green space, with tree-lined paths, open lawns and places to pause and unwind. Families are well served, with excellent schools close at hand, including the outstanding St Stephen's Primary School.

#### WHAT ELSE?

Well connected for travel across London, Upton Park is a six-minute walk away, with regular District and Hammersmith & City line services, while East Ham is fourteen minutes away. A wide network of bus routes also serves the area, providing further connections across London.



#### A WORD FROM THE OWNER...

School catchment, This house has been a wonderful place to raise our family while also working from home. Being so close to an outstanding nursery and primary school has made daily routines, especially the school run, incredibly easy.

The area offers a great balance of city convenience, with several parks within walking distance. The Wanstead Flats is a 12-minute cycle away, making it easy to feel removed from the hustle and bustle while still being well connected.

There's a strong sense of community locally, including a street WhatsApp group, and the nearby Boleyn is an excellent, family-friendly pub that we've really enjoyed. A short walk to Upton Park has made commuting, socialising, and going out for meals effortless, with fantastic food options on the doorstep when we want them.

It's been a genuinely special place to live.

FOLLOW US ➔ @STOWBROTHERS  
STOWBROTHERS.COM





REQUEST A VIEWING  
0203 397 2222

FOLLOW US ➡ @STOWBROTHERS  
STOWBROTHERS.COM





**Reception Room**  
11'8" x 13'1"

**Reception Room**  
12'2" x 10'9"

**Kitchen**  
8'0" x 11'7"

**Bedroom**  
15'3" x 11'0"

**Bedroom**  
9'10" x 10'9"

**WC**

**Bathroom**  
8'1" x 7'1"

**Bedroom**  
8'5" x 19'3"

**Bedroom**  
7'2" x 11'7"

**Bathroom**  
5'4" x 7'10"



REQUEST A VIEWING  
0203 397 2222

FOLLOW US ➡ @STOWBROTHERS  
STOWBROTHERS.COM