



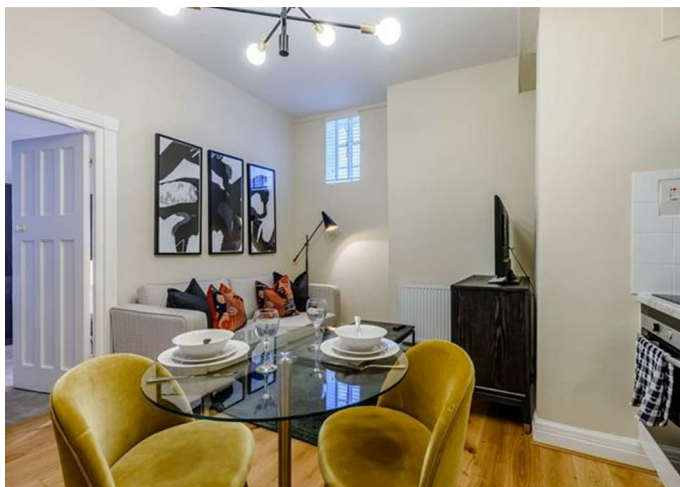
Flat

**FLAT 20, 143,  
STRATHMORE COURT,  
PARK ROAD, NW8 7HY**

Per Month  
**£600 Per**

Available: 31st March 2026

FEATURES



**Huddletons**

# 1 Bedroom Flat located in London

We are pleased to offer this 323 sq ft, ground floor, 1 bedroom 1 bathroom apartment set within a ported building opposite Regents Park. This apartment is ideally suited to young professionals or students due to its proximity to the West End, as well as a number of top colleges and universities such as the London Business School, University of Westminster and the Royal College of Physicians.

Strathmore Court is located within a 10 minute walk from St John's Wood underground station (Jubilee Line) and Marylebone underground and overground station (Bakerloo Line and national railway). Lords Cricket Ground, along with the large variety of cafés, restaurants and boutique shops in St John's Wood are all easily accessible.

Residential Land is the owner and managing agent of this property. Rent directly from us and pay no agency fees - just a one-off checkout charge. All of our tenants benefit from a dedicated on-site or building manager who is on hand to assist with any property related issues. We also employ a dedicated team of maintenance experts and provide a 24-hour emergency helpline.

Call us on

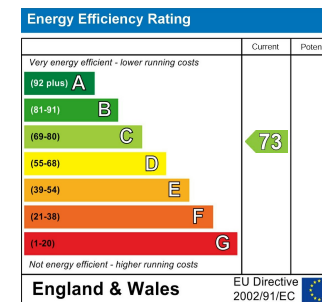
**0207 205 4411**

[info@huddletons.com](mailto:info@huddletons.com)

<http://www.huddletons.com>

**Council Tax Band**

**C**



Agents Note: Whilst every care has been taken to prepare these particulars, they are for guidance purposes only. All measurements are approximate and are for general guidance purposes only and whilst every care has been taken to ensure their accuracy, they should not be relied upon and potential buyers are advised to recheck the measurements.

# Huddletons