



Wheeler Gardens, N1

£450,000

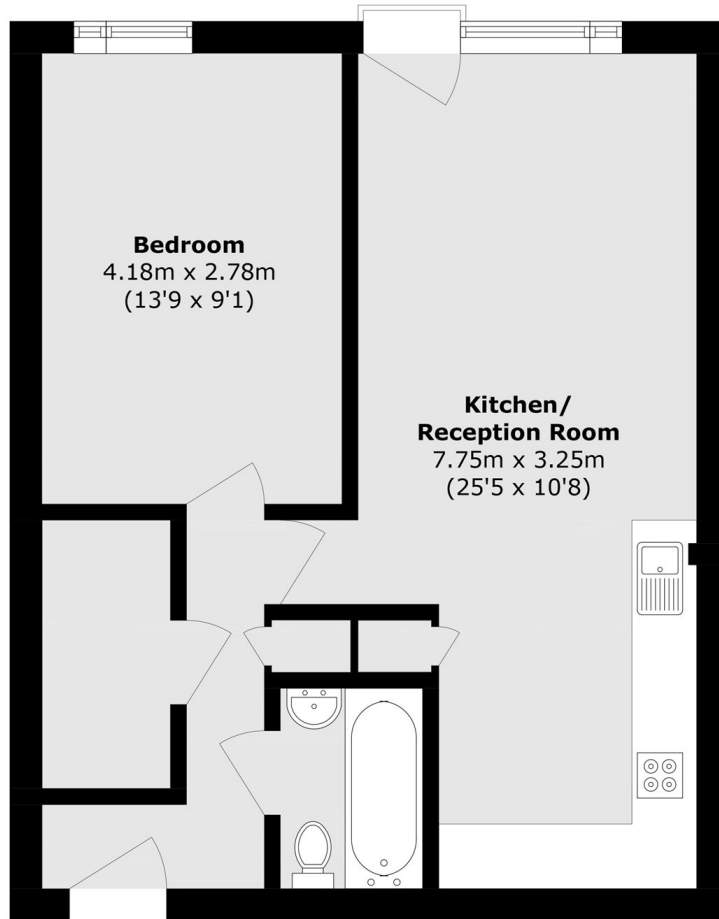
Situated on the first floor, the one-bedroom property features contemporary finishes throughout, including a newly installed kitchen and a spacious walk-in wardrobe offering excellent storage. Both the living area and bedroom enjoy a south-westerly aspect, allowing for an abundance of natural light.

Wheeler Gardens is superbly positioned, with excellent transport connections nearby, including St Pancras International and King's Cross station, offering access to multiple underground lines (Northern, Victoria, Hammersmith & City, Metropolitan, Circle and Piccadilly) as well as National Rail services, ensuring swift connections into the City and the West End. The vibrant Coal Drops Yard and Granary Square are also just a short stroll away, providing an array of shops, restaurants, and leisure amenities.

Features

- Sold Chain Free
- One Bedroom
- One Bathroom
- Open Plan Reception
- Walk-In Close
- Abundance of Natural Light

Wheeler Gardens, London, N1



First Floor

Total area (approx.): 47.0 sq. m (505.9 sq. ft)