



**BRUTON**

— PROPERTY —



Cherry Tree Farm Missenden Road  
Buckinghamshire, HP15 6ED

Guide price £1,500,000



# Cherry Tree Farm Missenden Buckinghamshire, HP15 6ED

Consent for 6 Residential Homes |  
Great Kingshill, Buckinghamshire,  
HP15 6ED

An outstanding opportunity to acquire a fully consented residential development site in the highly desirable village of Great Kingshill, Buckinghamshire.

Extending to approximately 2.891 acres, the site occupies an attractive position within an established village setting, offering a rare chance to deliver a high-quality scheme in a proven and affluent market.

## Planning & Development

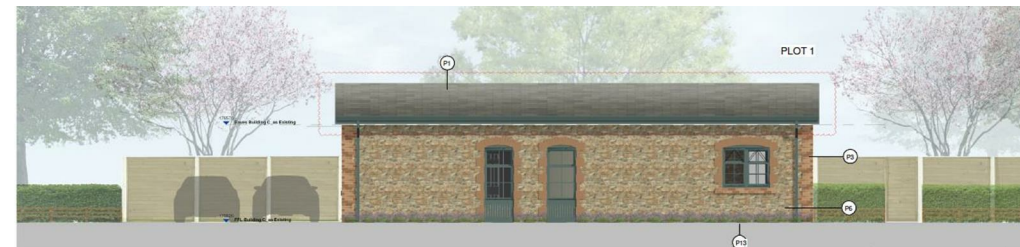
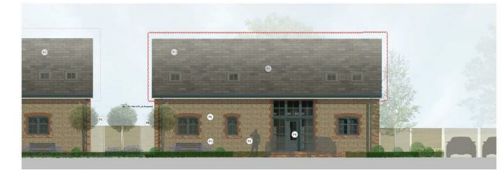
The site benefits from detailed planning permission for 6 residential units, comprising:

Conversion of three agricultural buildings into five character dwellings  
Demolition of the existing bungalow and construction of a new detached family home

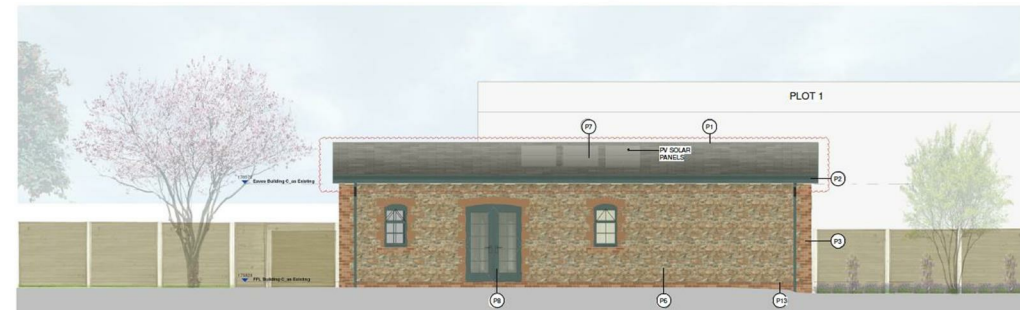
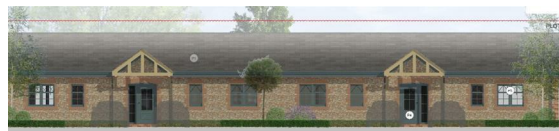
The scheme has been thoughtfully designed to combine period character with modern living, creating strong appeal for the local market and supporting premium end values.

## Key Features

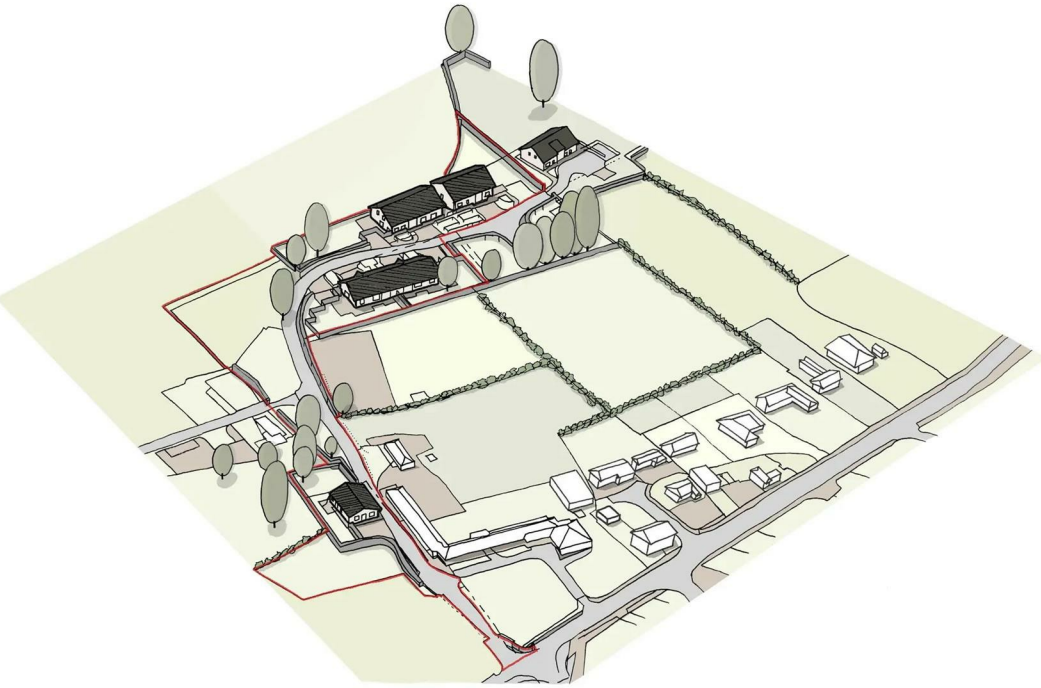
- Approx. 2.891 acres
- Full planning consent for 6 units
- Blend of barn conversions and new-build
- Prime Buckinghamshire village location
- Strong GDV potential in an established market



Plot 1 North Elevation as Proposed



Plot 1 South Elevation as Proposed



## Shovel-ready opportunity

### Further Information

A comprehensive data pack is available upon request, including title information, planning documentation, and technical reports.

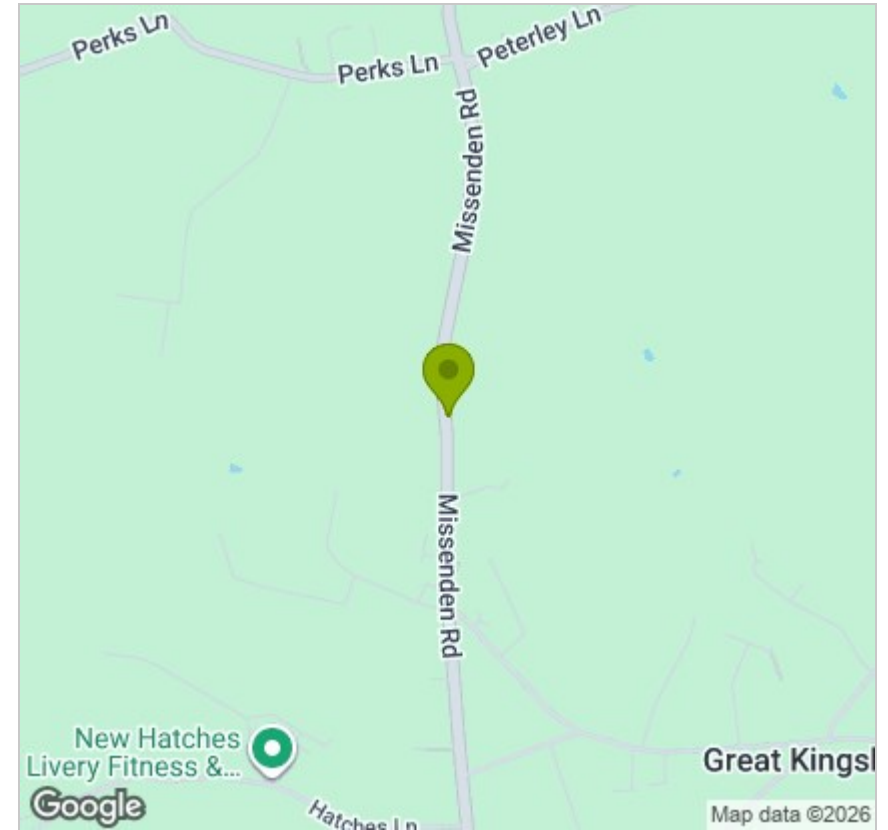
This represents a rare, turnkey development opportunity in a prime Home Counties location, ideally suited to developers seeking a well-located scheme with immediate deliverability and clear upside.

For further information or to arrange a discussion, please get in touch.

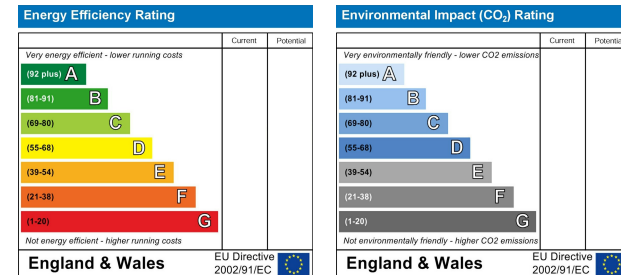
## Floor Plan



## Area Map




## Energy Efficiency Graph




## Viewing

Please contact our Bruton Property Office on 0207 459 4696 if you wish to arrange a viewing appointment for this property or require further information.

These particulars, whilst believed to be accurate are set out as a general outline only for guidance and do not constitute any part of an offer or contract. Intending purchasers should not rely on them as statements of representation of fact, but must satisfy themselves by inspection or otherwise as to their accuracy. No person in this firm's employment has the authority to make or give any representation or warranty in respect of the property.

 **20 Lees Place, Mayfair**  
London, W1K 6LP

 **020 7459 4696**

 **info@brutonproperty.co.uk**  
**www.brutonproperty.co.uk**