



📍 3 Milton Hill Farm Milton Hill Farm, Everleigh, SN9 6LZ

🏠 £650,000

A secluded beautiful four bedroom semi-detached home, finished to an excellent standard with stunning views over fields from its generous approximate 0.42 acre plot

- Four bedroom semi-detached cottage
- Approximate 0.42 acre plot
- Large double garage/workshop and driveway for several vehicles
- Finished to an excellent standard throughout
- Variety of fruit trees and vegetable areas
- Countryside walks from the front door
- Rural, secluded and private location
- Stunning panoramic views over fields around the entire property
- Viewings are a must
- No onwards chain

🏡 Freehold

🏠 EPC Rating D



Set in an idyllic rural position and approached via a peaceful byway from Everleigh Road, 3 Milton Hill Farm is a recently extended four-bedroom semi-detached family home occupying a generous plot of approximately 0.42 acres. Enjoying complete privacy and uninterrupted countryside views from every aspect, this charming home is offered to the market with no onward chain, presenting an exceptional opportunity to embrace country living.

Extending to over 2,200 sq ft including the detached garage, the accommodation has been thoughtfully arranged to provide spacious and versatile living throughout. A welcoming entrance hall leads to a superb dual-aspect sitting room, centred around an attractive open fireplace, creating a warm and inviting focal point. Adjacent is a generous dining room, ideal for family life and entertaining, which opens into a bright conservatory where the surrounding gardens and far-reaching farmland can be enjoyed throughout the seasons.

The well-proportioned kitchen offers ample worktop and storage space and is complemented by a practical utility room with cloakroom facilities and external access.

The first floor provides four comfortable bedrooms. The principal bedroom is a particularly impressive space and benefits from its own en-suite shower room, while a well-appointed family bathroom serves the remaining bedrooms. A pull down staircase gives access to a loft room on the second floor, offering excellent storage or potential as a hobby room or home office, subject to any necessary consents.

Outside, the mature wraparound gardens feature established trees, fruit trees, vegetable patches, expansive lawns, and a patio with BBQ area, all enjoying stunning views across the surrounding countryside. To the front, a generous driveway provides parking for several vehicles and leads to a substantial detached garage, ideal as a workshop and additional storage.

Overall it offers generous accommodation, beautiful gardens and an idyllic rural setting

Location

Located in a secluded rural location, away from the hustle and bustle, 3 Milton Hill Farm is a countryside paradise on the outskirts of Everleigh. Everleigh is situated on the north-eastern edge of Salisbury Plain in Wiltshire. The nearby village of Pewsey offers a range of everyday amenities, including pubs, shops, post office, super market a village hall, hairdresser, doctor's surgery, and primary school. More extensive shopping, leisure, and professional services can be found in the attractive market towns of Marlborough and Devizes.

Pewsey provides a mainline railway station with direct services to London Paddington in approximately one hour, making it an excellent location for commuters. The area is also well served by a number of highly regarded schools, including St John's Academy, Marlborough College, Dauntsey's School, and St Francis School.

The historic cathedral cities of Bath and Salisbury are both within easy reach, while the larger commercial centres of Swindon, Andover, and Newbury provide a wider range of employment, retail, and recreational opportunities.

Property Information

Council Tax: Band: C

EPC Rating: D

Services: Bore hole water supply, private drainage and mains electricity.

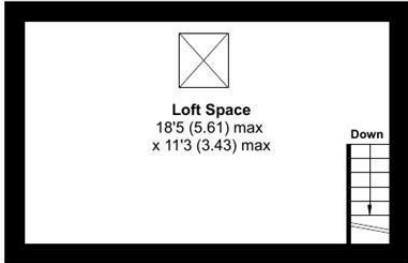
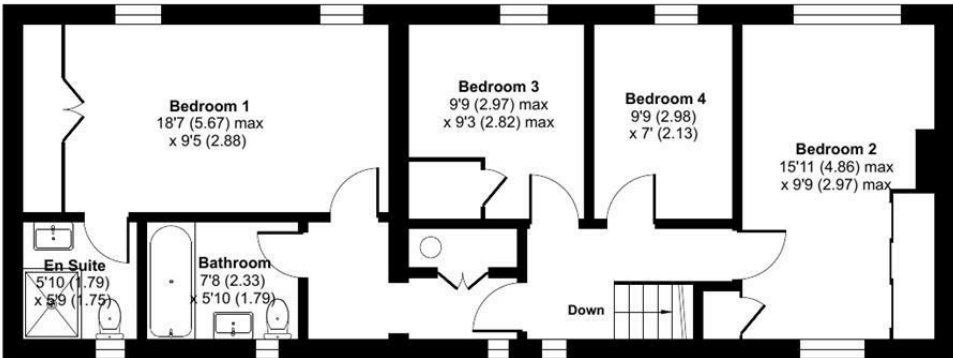
Combination of oil central heating and electric heating

Wiltshire County Council



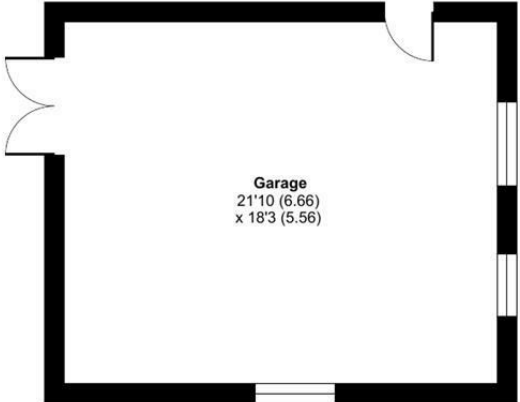
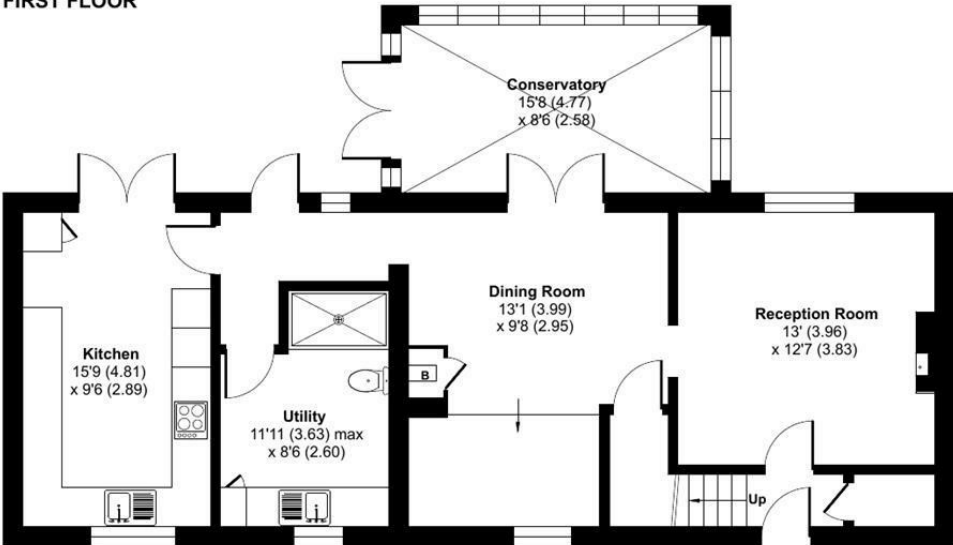
Milton Hill Farm, Pewsey, SN9

Approximate Area = 1815 sq ft / 168.6 sq m
 Garage = 399 sq ft / 37 sq m
 Total = 2214 sq ft / 205.6 sq m
 For identification only - Not to scale



FIRST FLOOR

SECOND FLOOR



GROUND FLOOR

Floor plan produced in accordance with RICS Property Measurement 2nd Edition, Incorporating International Property Measurement Standards (IPMS2 Residential). © ntechcom 2026. Produced for Strakers. REF: 1470779

Disclaimer: These particulars, whilst believed to be accurate are set out as a general outline only for guidance and do not constitute any part of an offer or contract. Intending purchasers should not rely on them as statements of representation of fact, but must satisfy themselves by inspection or otherwise as to their accuracy. No person in this firm's employment has the authority to make or give any representation or warranty in respect of the property. All measurements and distances are approximate only. Your home is at risk if you do not keep up repayments on a mortgage or other loan secured on it.



For further details 01672 551154
 pewsey@strakers.co.uk

In branch | Online | On the move
 strakers.co.uk