

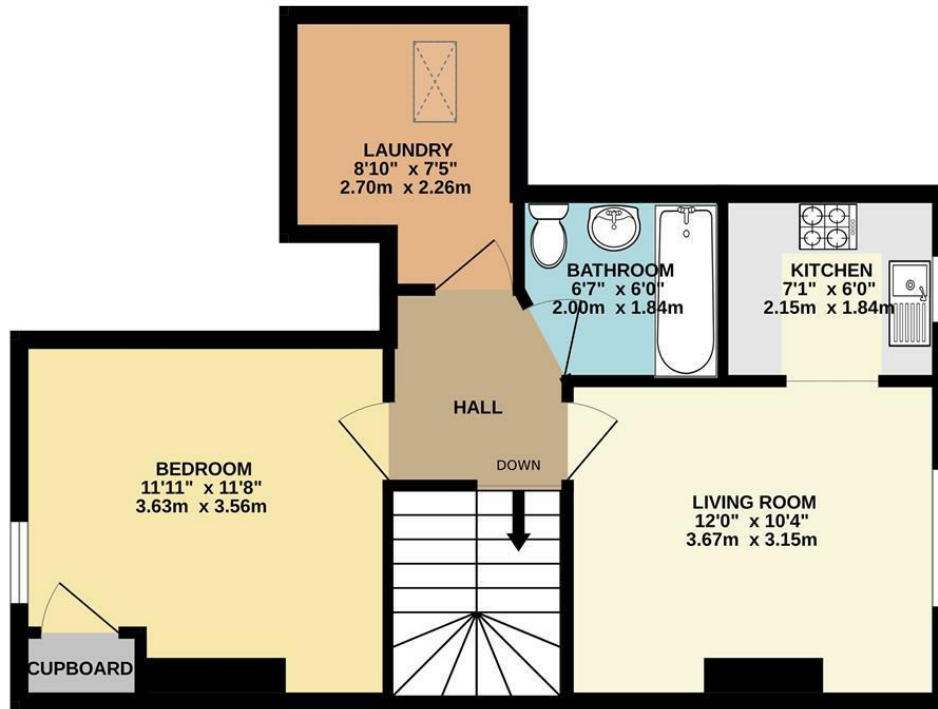


**1 Bed
Flat
located in West
Didsbury**

£1,050 Per Month



SECOND FLOOR
468 sq.ft. (43.5 sq.m.) approx.



DIRECTIONS

CONTACT

31 Barlow Moor Road
Didsbury
Manchester
M20 6TW

E: office@stantonproperties.co.uk
T: 01614345307

TOTAL FLOOR AREA : 468 sq.ft. (43.5 sq.m.) approx.
Whilst every attempt has been made to ensure the accuracy of the floorplan contained here, measurements of doors, windows, rooms and any other items are approximate and no responsibility is taken for any error, omission or mis-statement. This plan is for illustrative purposes only and should be used as such by any prospective purchaser. The services, systems and appliances shown have not been tested and no guarantee as to their operability or efficiency can be given.
Made with Metropix ©2025

Energy Efficiency Rating		
	Current	Potential
Very energy efficient - lower running costs		
(92 plus) A		
(81-91) B		
(69-80) C		
(55-68) D	57	57
(39-54) E		
(21-38) F		
(1-20) G		
Not energy efficient - higher running costs		
England & Wales	EU Directive 2002/91/EC	

