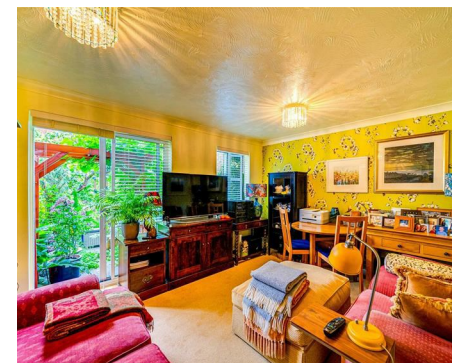




LIVERMORES
THE ESTATE AGENTS

2 Bedrooms
House - Terraced
Located in Dartford
£375,000



dartford@livermores.co.uk

www.livermores.co.uk

01322 228090



LIVERMORES
THE ESTATE AGENTS

1 Hythe Street
Dartford
Kent
DA1 1BE

01322 228090

dartford@livermores.co.uk

www.livermores.co.uk

GUIDE PRICE £375,000 TO £400,000 This beautifully presented TWO DOUBLE BEDROOM home is located on a sought after development close to Darenth Park Hospital. Situated in a peaceful setting facing a green the property comprises reception room with doors out to a secluded garden, well appointed kitchen and cloakroom to the ground floor, with 2 good size double bedrooms and a lovely bathroom to the first floor. Just a short journey to Bluewater with its array of restaurants and bars, multiplex cinema and excellent shopping facilities, other major benefits include 2 allocated parking spaces, double glazing and gas central heating. Darenth Country Park is close by, and there's easy access to Ebbsfleet International and HS1, 17mins to St Pancras. Offered in immaculate order this property would make a wonderful first home. INTERNAL VIEWING HIGHLY RECOMMENDED

Energy Efficiency Rating: C

Agents Note: Whilst every care has been taken to prepare these particulars, they are for guidance purposes only. All measurements are approximate and are for general guidance purposes only and whilst every care has been taken to ensure their accuracy, they should not be relied upon and potential buyers/tenants are advised to recheck the measurements.