



smarthomes

Brandon Court

Wake Green Road, Moseley

- A Well Presented Ground Floor Apartment
- Two Bedrooms
- Spacious Lounge
- Fitted Kitchen
- Jack & Jill En Suite Wet Room
- Allocated Parking Space

Offers Over £156,000

Current EPC Rating - C

Current Council Tax Band - B





Property Description

A well presented purpose built two bedroom ground floor apartment situated within a modern complex and benefiting from spacious lounge, fitted kitchen, Jack & Jill en-suite wet room, allocated parking, double glazing and gas central heating

Tenure

We are advised by the vendor that the property is leasehold with approx. 104 years remaining on the lease, a service charge of approx. £1,526.66 per annum and a ground rent of approx. £175 per annum. We would advise all interested parties to obtain verification through their own solicitor or legal representative. EPC supplied by Vendor. Current council tax band – B



Rooms & Measurements

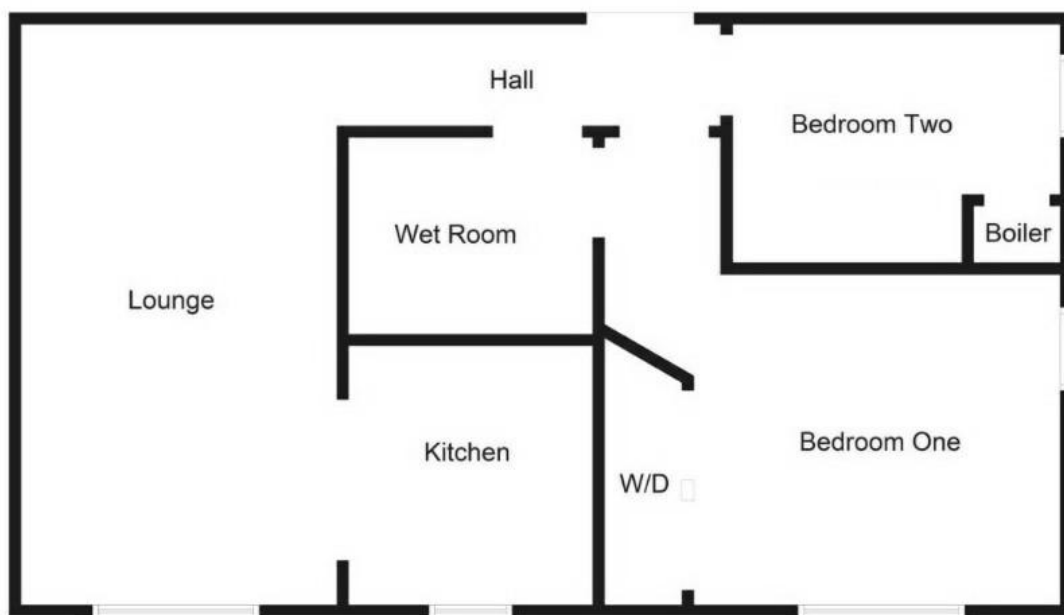
Spacious Lounge to Front 5.08m x 2.82m (16'8" x 9'3")

Modern Fitted Kitchen to Front 2.26m x 2.13m (7'5" x 7'0")

Dual Aspect Master Bedroom 4.04m max x 3.96m max (13'3" max x 13'0" max)

Jack & Jill En-Suite Wet Room 2.11m x 1.75m (6'11" x 5'9")

Bedroom Two to Side 2.95m x 2.11m (9'8" x 6'11")



316 Stratford Road
Shirley
Solihull
B90 3DN

www.smart-homes.co.uk
0121 744 4144

Agents Note: Whilst every care has been taken to prepare these particulars, they are for guidance purposes only. We believe all information to be correct from the day of marketing however, we advise and recommend that your conveyancer and or surveyor verifies all information supplied. All measurements are approximate are for general guidance purposes only and whilst every care has been taken to ensure their accuracy, they should not be relied upon and potential buyers are advised to recheck the measurements.