



**Connells**

Evensford Walk  
Irthlingborough Wellingborough



### Property Description

\*\*\* Set back behind a beautifully maintained front garden, this four bedroom detached home is well presented throughout and offers a dual aspect lounge, kitchen diner leading onto rear garden, ground floor cloakroom and first floor shower room as well as garage and driveway! \*\*\*

### Kitchen Diner

Double glazed door and windows to rear elevation. Fitted with a range of wall and base units with work surfaces over and stainless steel sink drainer. Double electric oven and gas hob with cooker hood over.

### Entrance Porch

Double glazed door to front elevation and double glazed windows to front and side elevations.

### Entrance Hall

Double glazed door to front elevation, under stairs cupboard and radiator.

### Cloakroom

Double glazed window to side elevation. Low level wc and wash hand basin with tiling to water sensitive areas and radiator.

### Lounge

Double glazed bay window to front elevation and radiator.



## First Floor Landing

Double glazed window to front elevation, cupboard housing boiler, radiator.

## Bedroom One

Double glazed window to rear elevation, fitted wardrobes and radiator.

## Bedroom Two

Double glazed windows to rear and side elevations and radiator.

## Bedroom Three

Double glazed window to rear elevation, loft access and radiator.

## Bedroom Four

Double glazed window to front elevation and radiator.

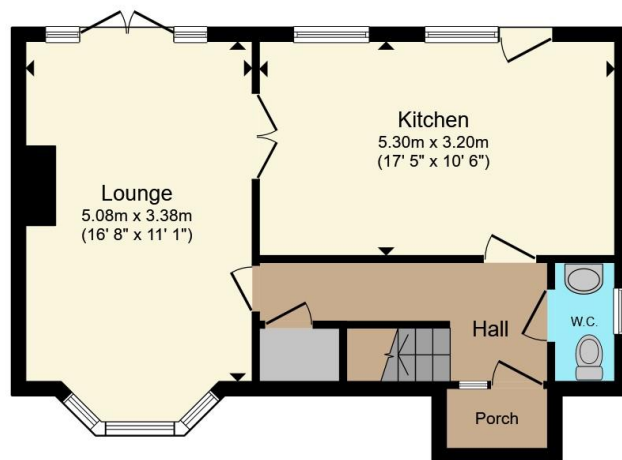
## Shower Room

Double glazed window to front elevation. Shower, low level wc, vanity wash hand basin and ladder style radiator.

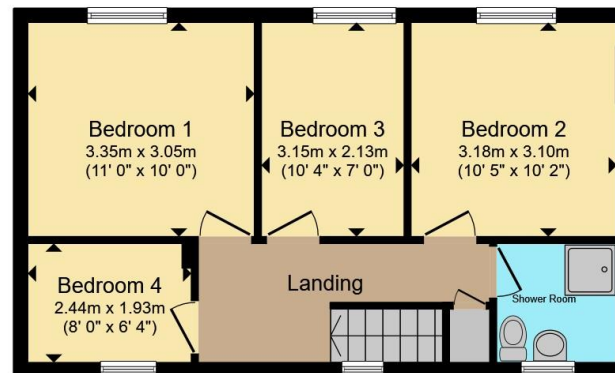








**Ground Floor**



**First Floor**

Total floor area 91.8 m<sup>2</sup> (988 sq.ft.) approx

This floor plan is for illustrative purposes only. It is not drawn to scale. Any measurements, floor areas (including any total floor area), openings and orientation are approximate. No details are guaranteed, they cannot be relied upon for any purpose and they do not form part of any agreement. No liability is taken for any error, omission or misstatement. A party must rely upon its own inspection(s). Powered by [www.propertybox.io](http://www.propertybox.io)



To view this property please contact Connells on

**T 01933 312 363**  
**E [rushdan@connells.co.uk](mailto:rushdan@connells.co.uk)**

66 High Street  
 RUSHDEN NN10 0PJ

EPC Rating: C Council Tax  
 Band: D

Tenure: Freehold

**view this property online [connells.co.uk/Property/RDN406131](http://connells.co.uk/Property/RDN406131)**



1. MONEY LAUNDERING REGULATIONS Intending purchasers will be asked to produce identification documentation at a later stage and we would ask for your co-operation in order that there will be no delay in agreeing the sale. 2. These particulars do not constitute part or all of an offer or contract. 3. The measurements indicated are supplied for guidance only and as such must be considered incorrect. Potential buyers are advised to recheck measurements before committing to any expense. 4. We have not tested any apparatus, equipment, fixtures, fittings or services and it is in the buyers interest to check the working condition of any appliances.

Connells Residential is registered in England and Wales under company number 1489613, Registered Office is Cumbria House, 16-20 Hockliffe Street, Leighton Buzzard, Bedfordshire, LU7 1GN. VAT Registration Number is 500 2481 05.

**See all our properties at [www.connells.co.uk](http://www.connells.co.uk) | [www.rightmove.co.uk](http://www.rightmove.co.uk) | [www.zoopla.co.uk](http://www.zoopla.co.uk)**

Property Ref: RDN406131 - 0004