



Hookfield Mews 23-25 West Hill, Epsom, KT19 8JN
Asking Price £250,000

****Over 60's Development**** Thomas & May is delighted to bring to the market this one bedroom mews house located in a gated development for Over 60's located within half a mile of Epsom Town centre with its shops and local amenities. Accommodation comprises lounge/dining room, fitted kitchen, downstairs cloakroom, first floor double bedroom and bathroom. The development benefits from resident parking and a communal courtyard garden. No Onward Chain.

Entrance

Private front door leading to entrance hall, wood effect flooring, door to:

Living room 15'1" x 11'11" (4.6 x 3.65)

Front aspect double glazed bay window, continuation of wood effect flooring, power points, TV aerial point, telephone point, radiator, storage cupboard, arch leading to:

Kitchen 8'6" x 7'0" (2.6 x 2.15)

Rear aspect double glazed window, range of wall and base units, wood effect worktop with one and a half bowl stainless steel sink with drainer and mixer tap, integrated oven, integrated hob with extractor fan over, space and plumbing for washing machine, space for fridge freezer, part tiled walls, continuation of wood effect flooring, power points.

Internal Hall

Door from living leading to internal hall which has storage cupboard, door leading to:

Cloakroom

Rear aspect double glazed frosted window, two piece suite comprising low level wc and sink, heated towel rail.

First Floor Landing

Stairs leading to first floor landing which has Velux window, hatch giving loft access, two further storage cupboards, power points, doors to:

Bedroom 13'1" x 11'11" (4 x 3.65)

Front aspect double glazed window, built-in wardrobe, radiators, power points.

Bathroom

Double glazed Velux window, three piece suite comprising low level wc, vanity unit with inset sink and mixer tap, shower cubicle with dual outlet power shower, radiator, part tiled walls, tiled floor.

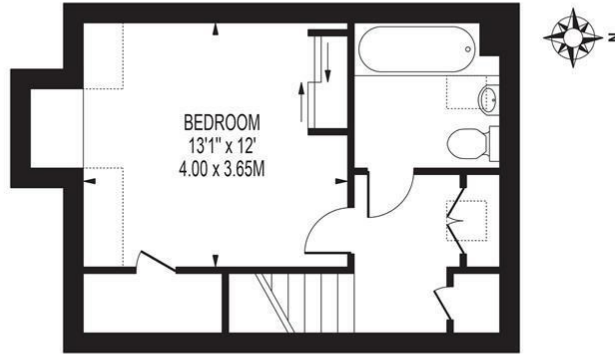
Outside**Resident Parking****Communal Courtyard****Council Tax Band D**

Floor Plan

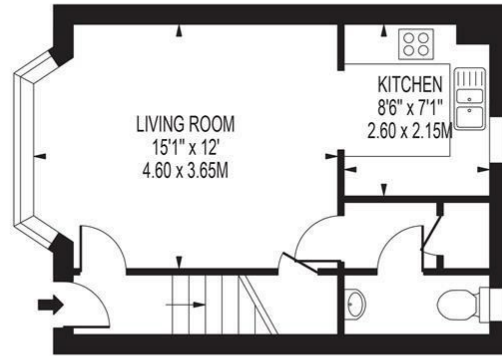
HOOKFIELD MEWS

APPROXIMATE TOTAL INTERNAL FLOOR AREA: 660 SQ FT - 61.32 SQ M
(INCLUDING RESTRICTED HEIGHT AREA)

APPROXIMATE GROSS INTERNAL FLOOR AREA OF RESTRICTED HEIGHT: 16 SQ FT - 1.50 SQ M



FIRST FLOOR

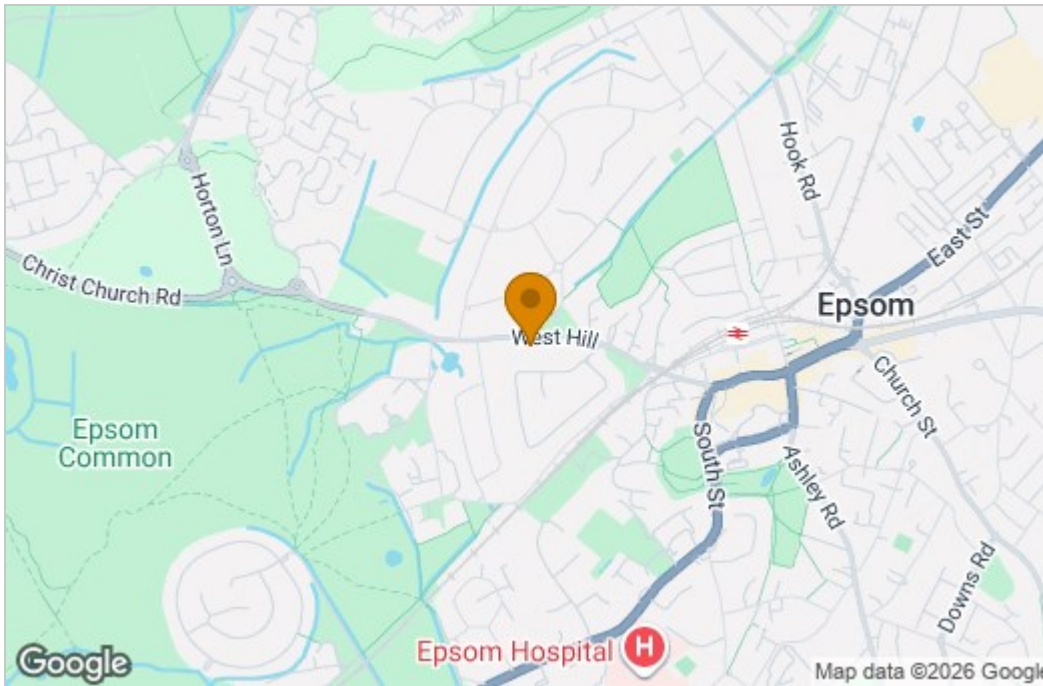


GROUND FLOOR

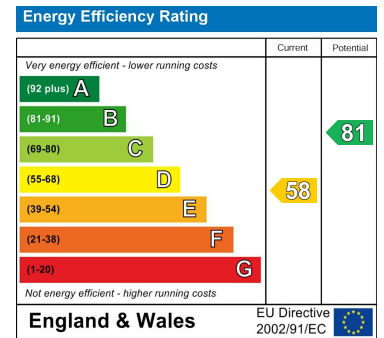
FOR ILLUSTRATION PURPOSES ONLY

THIS FLOOR PLAN SHOULD BE USED AS A GENERAL OUTLINE FOR GUIDANCE ONLY AND DOES NOT CONSTITUTE IN WHOLE OR IN PART AN OFFER OR CONTRACT. ANY INTENDING PURCHASER OR LESSEE SHOULD SATISFY THEMSELVES BY INSPECTION, SEARCHES, ENQUIRIES AND FULL SURVEYS AS TO THE CORRECTNESS OF EACH STATEMENT. ANY AREAS, MEASUREMENTS OR DISTANCES QUOTED ARE APPROXIMATE AND SHOULD NOT BE USED TO VALUE A PROPERTY OR BE THE BASIS OF ANY SALE OR LET.

Area Map



Energy Efficiency Graph



These particulars, whilst believed to be accurate are set out as a general outline only for guidance and do not constitute any part of an offer or contract. Intending purchasers should not rely on them as statements of representation of fact, but must satisfy themselves by inspection or otherwise as to their accuracy. No person in this firm's employment has the authority to make or give any representation or warranty in respect of the property.