



**Green Way, Newton Longville, Milton Keynes, MK17 0AP**

**welcome to**

## **Green Way, Newton Longville, Milton Keynes**

VILLAGE LOCATION! Beautifully extended three-bedroom semi-detached home with a stunning modern kitchen/diner and bright open-plan living space, perfect for contemporary family life. The property offers well-proportioned bedrooms plus a large frontage providing ample parking.

### **Entrance Hall**

Double-glazed door to the front, stairs to the first floor and radiator. Doors to the cloakroom and lounge.

### **Cloakroom**

Wash hand basin and low-level WC. Space for a washing machine and double-glazed obscured window to the side.

### **Lounge Area**

Radiator and double-glazed window to the front.

### **Kitchen/Dining Area**

Fitted with a mix of wall and base units with work top over, sink with drainer, integrated electric oven and hob with extractor fan over. Integrated dishwasher and fridge/freezer. Space for a dining table and chairs. Double-glazed velux style window and double-glazed window to the rear. Double-glazed bi-folding doors leading out to the garden.

### **First Floor Landing**

Stairs from the ground floor and doors to all bedrooms and the family bathroom.

### **Bedroom One**

Radiator and double-glazed window to the front.

### **Bedroom Two**

Radiator and double-glazed window to the rear.

### **Bedroom Three**

Radiator and double-glazed window to the front.

### **Shower Room**

Partially tiled with a wash hand basin, low-level WC and a shower cubicle. Heated towel rail and double-glazed obscured window to the rear.

### **Outside Outbuilding**

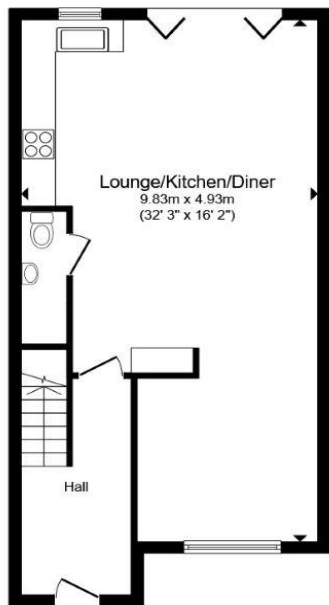
Built of timber with a double-glazed window and double doors for access.

### **Rear Garden**

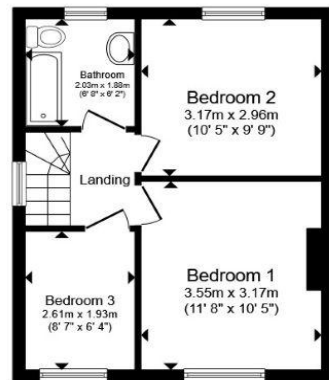
Enclosed by fencing with gated side access, the garden is mainly laid to lawn with flower and shrub borders. A paved patio area and access to the outbuilding.

### **Front Garden**

A large frontage which is laid to lawn with shrub borders. A shingle area and a drive providing off-road parking.



**Ground Floor**



**First Floor**



**Garage**

Total floor area 103.8 m<sup>2</sup> (1,117 sq.ft.) approx

This floor plan is for illustrative purposes only. It is not drawn to scale. Any measurements, floor areas (including any total floor area), openings and orientation are approximate. No details are guaranteed, they cannot be relied upon for any purpose and they do not form part of any agreement. No liability is taken for any error, omission or misstatement. A party must rely upon its own inspection(s). Powered by [www.propertybox.io](http://www.propertybox.io)



welcome to  
**Green Way,**  
**Newton Longville, Milton Keynes**

- EXTENDED FAMILY HOME
- IMMACULATE CONDITION
- OPEN PLAN KITCHEN/DINER
- LARGE FRONTAGE AND PARKING
- VILLAGE LOCATION

Tenure: Freehold EPC Rating: C  
Council Tax Band: C

guide price

**£415,000**



**view this property online** [brownandmerry.co.uk/Property/LBZ109718](https://www.brownandmerry.co.uk/Property/LBZ109718)



Property Ref:  
LBZ109718 - 0007

1. MONEY LAUNDERING REGULATIONS Intending purchasers will be asked to produce identification documentation at a later stage and we would ask for your co-operation in order that there is no delay in agreeing the sale. 2. These particulars do not constitute part or all of an offer or contract. 3. The measurements indicated are supplied for guidance only and as such must be considered incorrect. Potential buyers are advised to recheck measurements before committing to any expense. 4. We have not tested any apparatus, equipment, fixtures or services and it is in the buyers interest to check the working condition of any appliances. 5. Where an EPC, or a Home Report (Scotland only) is held for this property, it is available for inspection at the branch by appointment. If you require a printed version of a Home Report, you will need to pay a reasonable production charge reflecting printing and other costs. 6. We are not able to offer an opinion either written or verbal on the content of these reports and this must be obtained from your legal representative. 7. Whilst we take care in preparing these reports, a buyer should ensure that his/her legal representative confirms as soon as possible all matters relating to title including the extent and boundaries of the property and other important matters before exchange of contracts.

Brown & Merry is a trading name of Sequence (UK) Limited which is registered in England and Wales under company number 4268443, Registered Office is Cumbria House, 16-20 Hockliffe Street, Leighton Buzzard, Bedfordshire, LU7 1GN. VAT Registration Number is 500 2481 05.

brown & merry



**01525 372021**



[LeightonBuzzard@brownandmerry.co.uk](mailto:LeightonBuzzard@brownandmerry.co.uk)



17 High Street, LEIGHTON BUZZARD,  
Bedfordshire, LU7 1DT



**[brownandmerry.co.uk](https://www.brownandmerry.co.uk)**