



Halesworth Road, SE13

£475,000

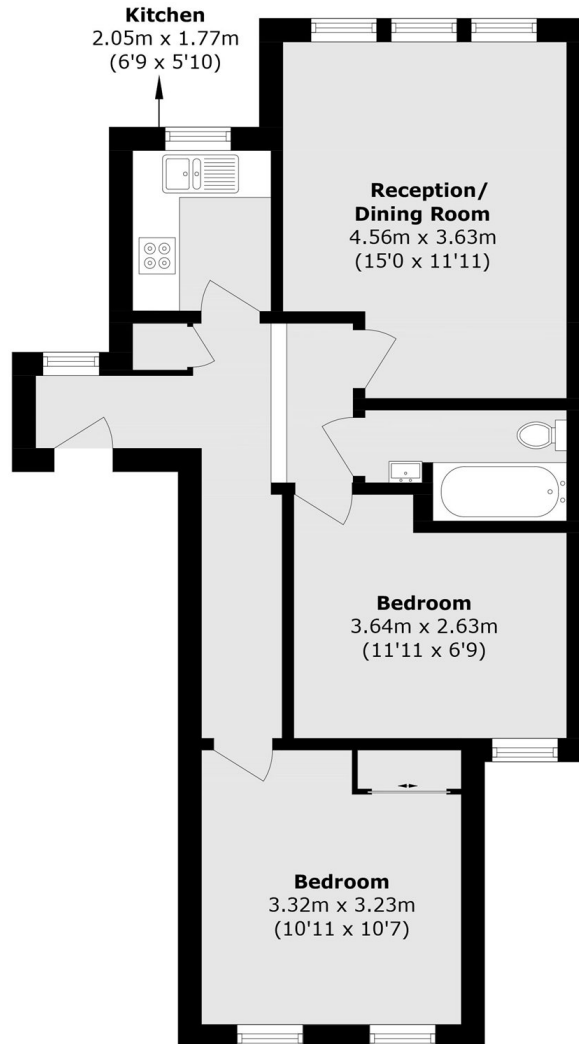
A beautifully presented flat set on the first floor of a characterful Edwardian house offered with a share of the freehold. There are two double bedrooms, a reception room filled with natural light and a favourable position moments from Hilly Fields.

Halesworth Road is a lovely residential road located just around the corner from Hilly Fields and between St. Johns, Lewisham and Ladywell train stations giving excellent transport links.

Features

- Two Double Bedroom
- Edwardian Conversion
- Immaculate Condition
- Share Of Freehold
- Close To Hilly Fields
- Close To Transport Links

Halesworth Road,
London, SE13



Total (approx.): 56.8 sq. m (611.3 sq. ft)