




RUSSEN & TURNER
www.russenandturner.co.uk

2 Millview Court Station Road, Snettisham, King's Lynn, PE31 7QJ

£249,995

Bedrooms: 3 | Bathrooms: 1 | Receptions: 2

Tucked away in the picturesque and ever-popular Norfolk coastal village of Snettisham, this delightful three-bedroom mid-terraced home offers the perfect blend of comfort, charm and convenience. Just a short stroll from the vibrant heart of the village, you'll find inviting pubs, independent shops, and welcoming local restaurants—everything you need for a quintessential coastal lifestyle.

Step inside and you'll immediately feel the calm, homely ambiance. The cosy living room is a true sanctuary—ideal for curling up by the fire after a brisk winter's walk along the nearby shoreline. The separate dining room provides the perfect space for gathering with friends and family, whether for long, leisurely dinners or special celebrations. The well-equipped kitchen is ready to inspire your inner chef, while a light-filled conservatory offers a tranquil spot to enjoy garden views all year round.

Upstairs, three generously sized bedrooms provide comfort and flexibility, complemented by a stylish and contemporary family bathroom.

Outside, the private rear garden is a peaceful haven—perfect for soaking up the sunshine or enjoying a quiet morning coffee. With the added benefit of allocated off-road parking and a garage, this home combines practicality with timeless appeal.

Whether you're seeking a holiday getaway, a peaceful coastal retreat, or a place to call home by the sea, this charming property in sought-after Snettisham is not to be missed.

Tenure: Freehold

Property Type: Terraced House

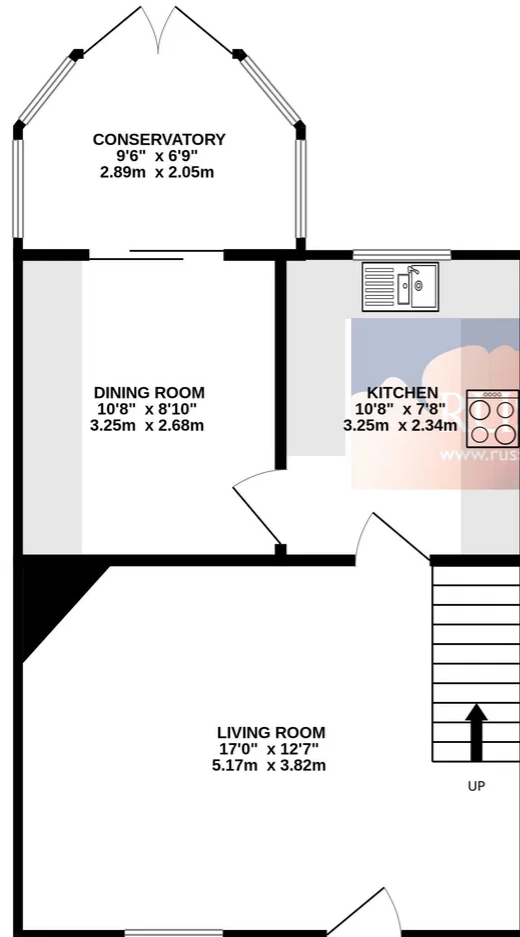
- Mid Terraced House
- Three Bedrooms
- No Onward Chain
- Sought After Coastal Village
- Ideal Holiday Cottage or Coastal Home
- Allocated Off-road Parking and Garage
- Private Rear Garden
- Two Reception Rooms
- Close to Village Amenities
- Gas Central Heating

Disclaimer

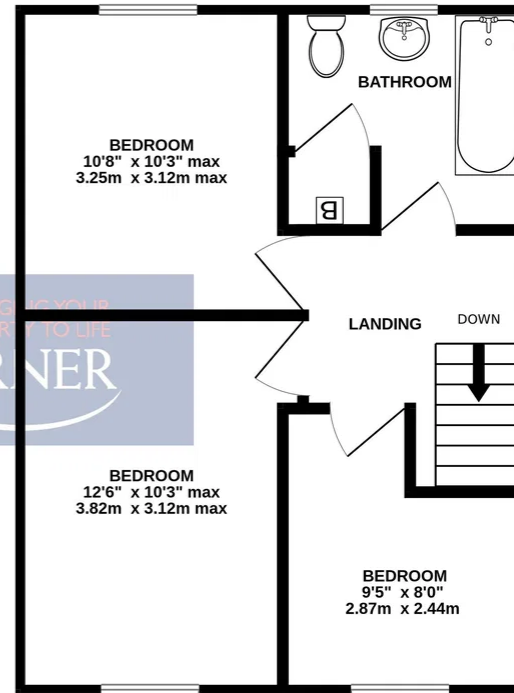
1. To meet money-laundering regulations, all buyers will need to complete an ID check. We'll ask you to provide the necessary documents, and there's a small fee of £20.50 per client for this service.
2. We do our best to make sure our property details are fair, accurate, and up to date, but they're meant as a general guide only. If there's anything particularly important to you, please get in touch — we'll be happy to look into it further.
3. All measurements are provided as a guide and may not be exact.
4. We haven't tested any of the property's services, equipment, or appliances. We recommend that buyers arrange their own survey or service checks before making a final offer.
5. These details are provided in good faith, but they don't form part of any offer or contract. Buyers should verify any points that are important to them before proceeding.



GROUND FLOOR
441 sq.ft. (40.9 sq.m.) approx.



1ST FLOOR
387 sq.ft. (35.9 sq.m.) approx.



TOTAL FLOOR AREA : 827 sq.ft. (76.9 sq.m.) approx.

Whilst every attempt has been made to ensure the accuracy of the floorplan contained here, measurements of doors, windows, rooms and any other items are approximate and no responsibility is taken for any error, omission or mis-statement. This plan is for illustrative purposes only and should be used as such by any prospective purchaser. The services, systems and appliances shown have not been tested and no guarantee as to their operability or efficiency can be given.
Made with Metropix ©2025