



AWARDED FOR
MARKETING | SERVICE | RESULTS



165 Oxhey Drive, Watford

Guide Price £450,000



 fairfieldestates



165 Oxhey Drive

Watford, Watford

THREE BEDROOM BRICK BUILT SEMI DETACHED PROPERTY WITH OFF STREET PARKING AND PRIVATE REAR GARDEN

Fairfields are delighted to present to the market this 1950's three bedroom semi detached family home with off street parking to the front and a private rear garden. This property is a blank canvas in need of modinisation and the perfect for any buyer looking to make the perfect family home.

Viewings are easily arranged however strictly by appointment only.

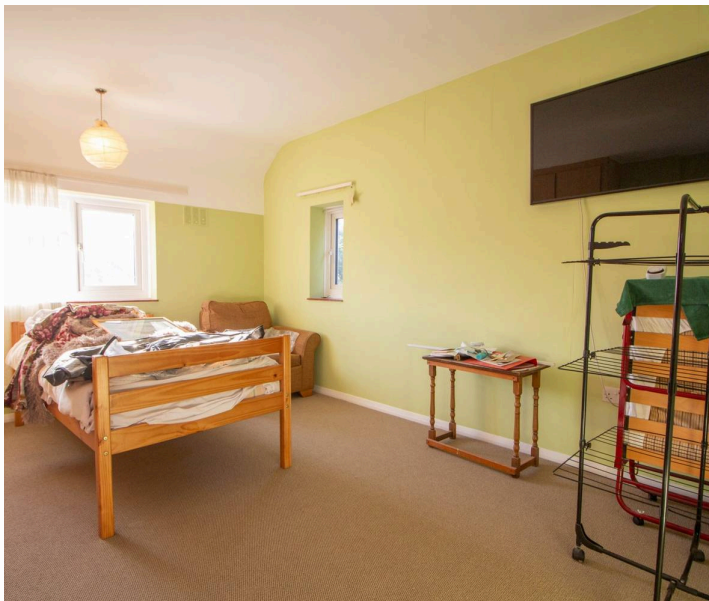
Council Tax band: D

Tenure: Freehold

EPC Energy Efficiency Rating: D

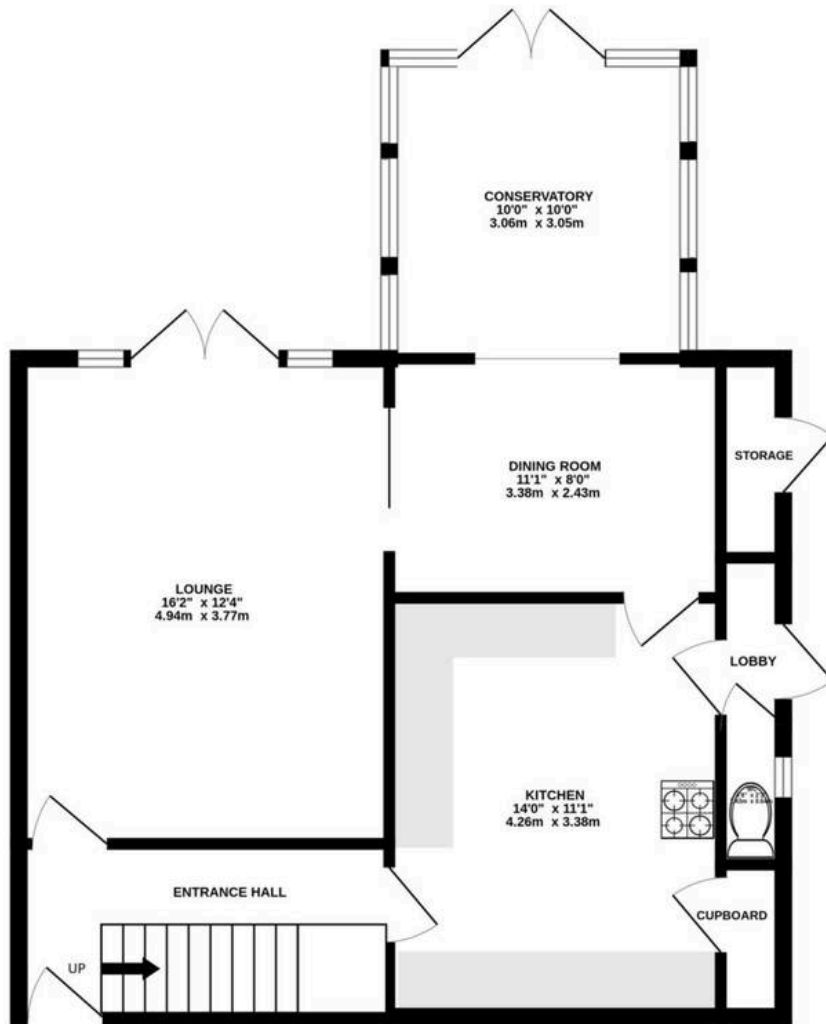
EPC Environmental Impact Rating:

- THREE BEDROOM
- SEMI DETACHED
- BRICK BUILT HOUSE
- OFF STREET PARKING
- PRIVATE REAR GARDEN
- DOUBLE GLAZED & ELECTRIC SOLAR HEATING

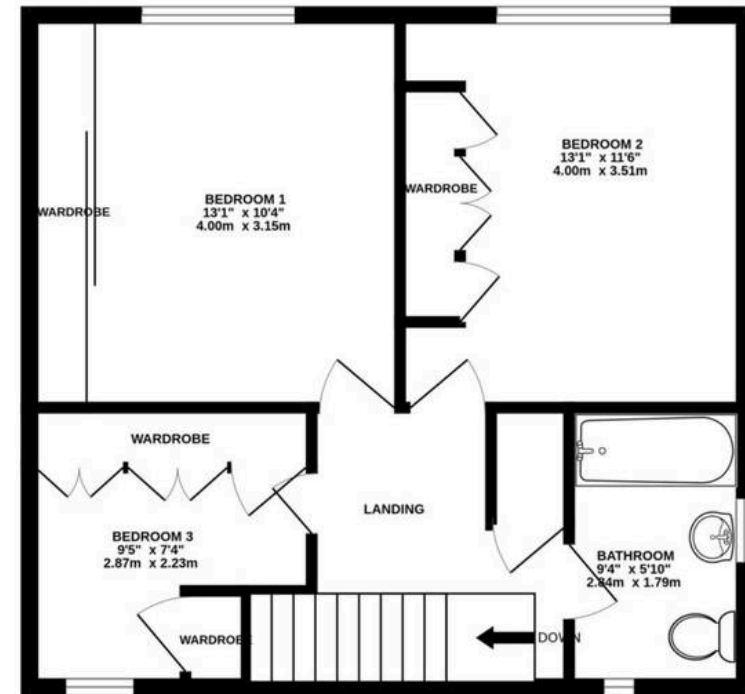




GROUND FLOOR
661 sq.ft. (61.4 sq.m.) approx.



1ST FLOOR
536 sq.ft. (49.8 sq.m.) approx.



TOTAL FLOOR AREA : 1197 sq.ft. (111.2 sq.m.) approx.

Whilst every attempt has been made to ensure the accuracy of the floorplan contained here, measurements of doors, windows, rooms and any other items are approximate and no responsibility is taken for any error, omission or mis-statement. This plan is for illustrative purposes only and should be used as such by any prospective purchaser. The services, systems and appliances shown have not been tested and no guarantee as to their operability or efficiency can be given.

Made with Metropix ©2026

