



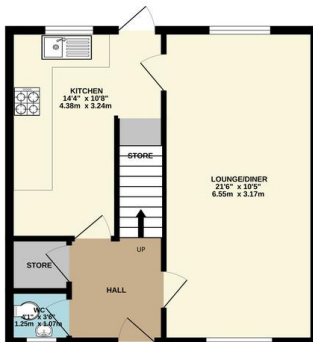
FOR SALE

3 Bed Town House in Champion Close, Rowlatts Hill LE5 4EX
£240,000

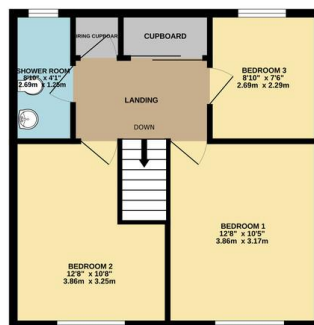
A fantastic opportunity to acquire a spacious three bedroom mid-town house situated within the highly sought-after Rowlatts Hill Estate bordering Evington. Offered to the market chain free, the property provides generous living accommodation throughout along with off-road parking, detached garage and a private rear garden. Requiring further cosmetic upgrading, this home presents excellent potential for buyers looking to put their own stamp on a property in a popular and well-established residential location.



GROUND FLOOR
452 sq.ft. (42.0 sq.m.) approx.



1ST FLOOR
452 sq.ft. (42.0 sq.m.) approx.



TOTAL FLOOR AREA: 905 sq.ft. (84.1 sq.m.) approx.
Whilst every attempt has been made to ensure the accuracy of the floorplan contained here, measurements of doors, windows, openings and any other items are approximate and no responsibility is taken for any error, omission or mis-statement. This plan is for illustrative purposes only and should be used as such by any prospective purchaser. The services, systems and appliances shown have not been tested and no guarantee as to their operability or efficiency can be given.
Made with Metreplan ©2020

EPC Ordered

- Three Bedroom Mid Town House
- Situated Within The Popular Rowlatts Hill Estate
- Bordering Evington
- Offered To The Market Chain Free
- Spacious Lounge Diner
- Ground Floor WC
- Detached Garage & Off Road Parking

Agents Note: Whilst every care has been taken to prepare these sales particulars, they are for guidance purposes only. All measurements are approximate are for general guidance purposes only and whilst every care has been taken to ensure their accuracy, they should not be relied upon and potential buyers are advised to recheck the measurements.

