

# Ash Lodge

£450,000

BRIK





# Ash Lodge

£450,000  
LEASEHOLD

1 Bed  
FLAT

610  
SQ FT

56  
SQ M

£12,500  
STAMP DUTY

A superb and unique one bedroom apartment in Ash Lodge, benefitting from having an impressive private west facing terrace, with views of the river and off-street parking.

This delightful first-floor apartment offers the largest west facing terrace in Ash Lodge and offers over 610 sq ft (57sq m) of living space. The accommodation comprises: a bright and airy dual aspect open plan kitchen/ reception room with fitted Canadian Maple units, a dining area, and a modern fitted kitchen with access to the private terrace with river views. There is a generous double bedroom, with built in wardrobes and additional direct access to the terrace, and a modern bathroom. Plenty of hallway storage follows, and a private separate storage room on the second floor, large enough to store a bicycle. Furthermore, there is lift access and double glazing throughout. The 24/7 communal heating and hot water is included in the reasonable service charges.

Ash Lodge is located in the Bishops Park Conservation Area, is a stone's throw from Bishops Park and has the benefit of private gated access to the Thames Path. The Nuffield Health Club, boasting a fully equipped gymnasium, swimming pool, sauna, steam room, and a variety of fitness classes is right next door. There is private off-street parking (permit required) on a first come, first served basis and has some excellent amenities close by including the new culture, dining and entertainment riverside centre at Fulham Pier, The Crabtree gastro pub, and the renowned River Café. Excellent bus links to Hammersmith, Putney Bridge and the West End operate on Fulham Palace Road and Hammersmith (District, Piccadilly, Circle and Hammersmith and City Lines) and Putney Bridge (District Line) underground stations are also within walking distance too. EPC rating - C

- ✓ Stunning apartment with river views
- ✓ Largest West facing terrace in the block
- ✓ Lift access
- ✓ Open plan kitchen reception room
- ✓ Double bedroom
- ✓ Bathroom
- ✓ Excellent transport links within walking distance
- ✓ Communal heating & hot water included in service charge
- ✓ Private off street parking available
- ✓ Approx. 610 sq ft (56 sq m)



Jessica Galletta

SALES ASSOCIATE  
+8 YEARS EXPERIENCE

020 7384 6790

jess@brik.co.uk





## FULHAM AREA GUIDE

# Bishops Park

The 'Bishop's Park' area is located on the south west border of Fulham, ideal for Tube links from Putney Bridge. The proximity of Bishops Park, Fulham Palace, the River and Putney Bridge tube go some way to offsetting the slightly out-of-the-way feel, but then many who buy here do so for that very reason. There's a more laid back feeling in the air, and parking is easier than more central areas of Fulham.

Gardens here are generally much larger than the Fulham average, and the houses are big too (over 4,000 sq ft in some cases), making this area extremely popular with families. Prices have rocketed in recent years, especially on the southern streets, but you still get more for your money than in Parsons Green.

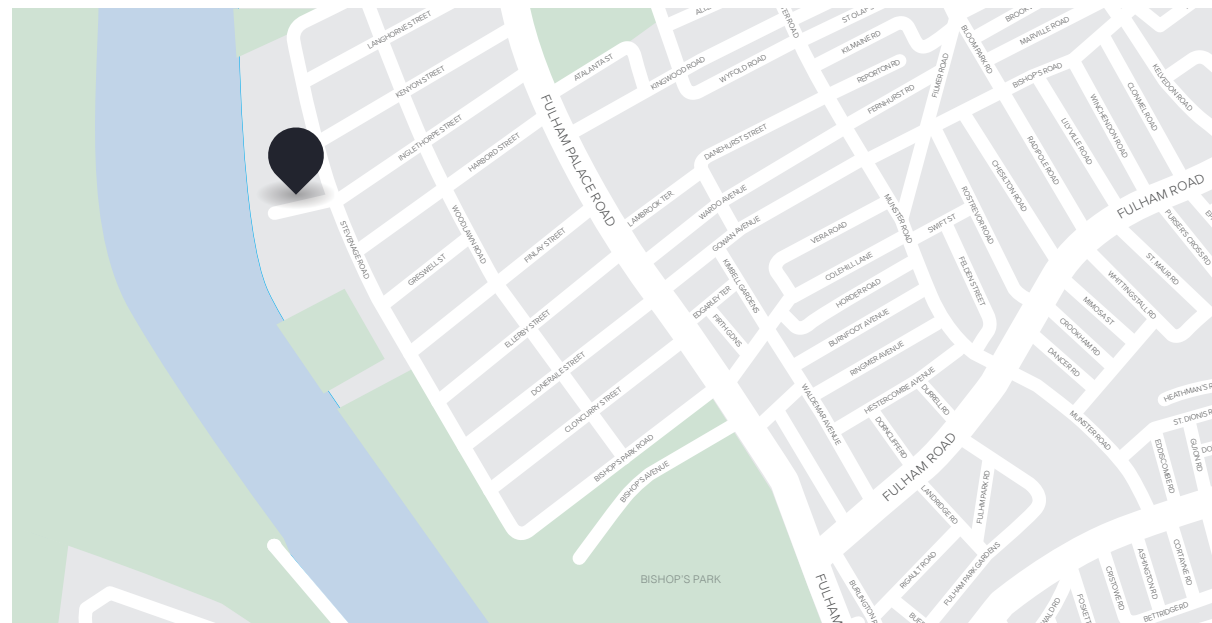
### CLOSEST:

- 🚶 Putney Bridge (🚶 23 mins)
- 🚶 West Brompton (🚶 34 mins)
- 🚶 Bishops Park (🚶 6 mins)

### KEY:

- 📍 Property location
- 'Bishops Park' area of Fulham

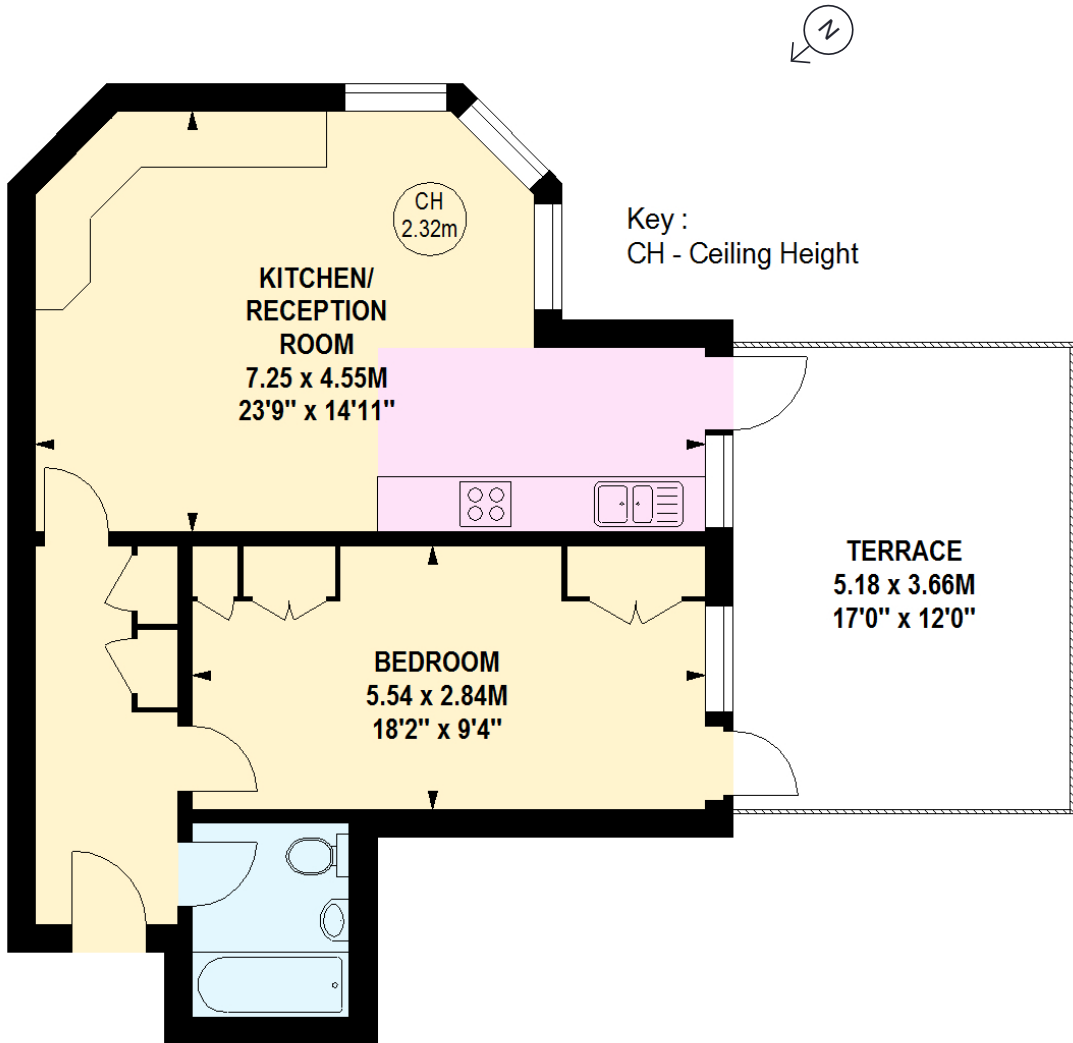
Read all our Fulham area guides here



**BRIK**

610  
SQ FT

56  
SQ M



First Floor

Important notice Brik give notice that: all text, photographs and plans on these brochure are for guidance only and are not necessarily comprehensive; any areas, measurements or distances given are approximate; these details do not constitute part of an offer or contract and must not be relied upon as statements or representations of fact; it should not be assumed that the property has all the necessary planning permissions and building regulations approvals; we are not authorised to give any representations or warranties in relation to this property whatsoever; potential purchasers must satisfy themselves as to the correctness of all details by inspection or otherwise. Brik, 77 Parsons Green Lane, Fulham, London SW6 4JA Tel: 020 7384 6790 Email: hello@brik.co.uk