



Hurfords

Hillside Gardens, Wittering, Peterborough Freehold Guide Price- £375,000

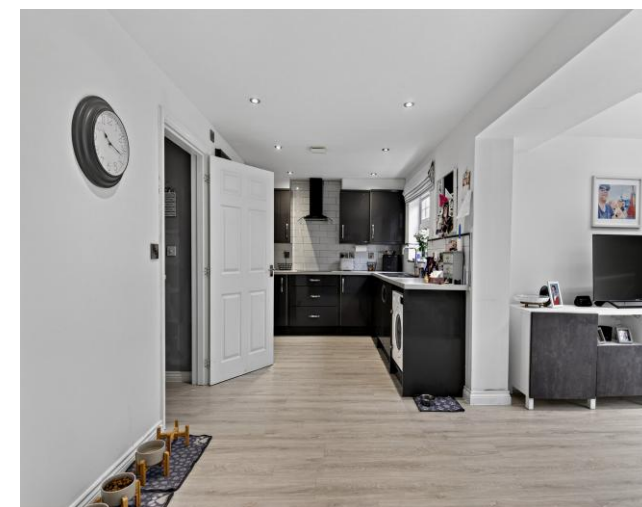
Key Features



- Beautifully extended three bedroom detached home
- Impressive open plan kitchen/dining/family room with skylights and bi fold doors
- Separate lounge with bay window
- Modern family bathroom & stylish en suite to the principal bedroom
- Generous landscaped rear garden with terrace and artificial lawn

Set in a popular residential cul-de-sac close to Stamford and moments from the A1, this superb three bedroom detached home has been significantly improved and extended to create a spacious, modern layout ideal for family living and entertaining, in a convenient and well-connected location.

The property opens into a welcoming entrance hallway with access to a ground floor WC. To the front, the cosy lounge features a bay window and contemporary wall panelling, offering a calm and inviting space to relax. A separate office provides an ideal work from home area or playroom.

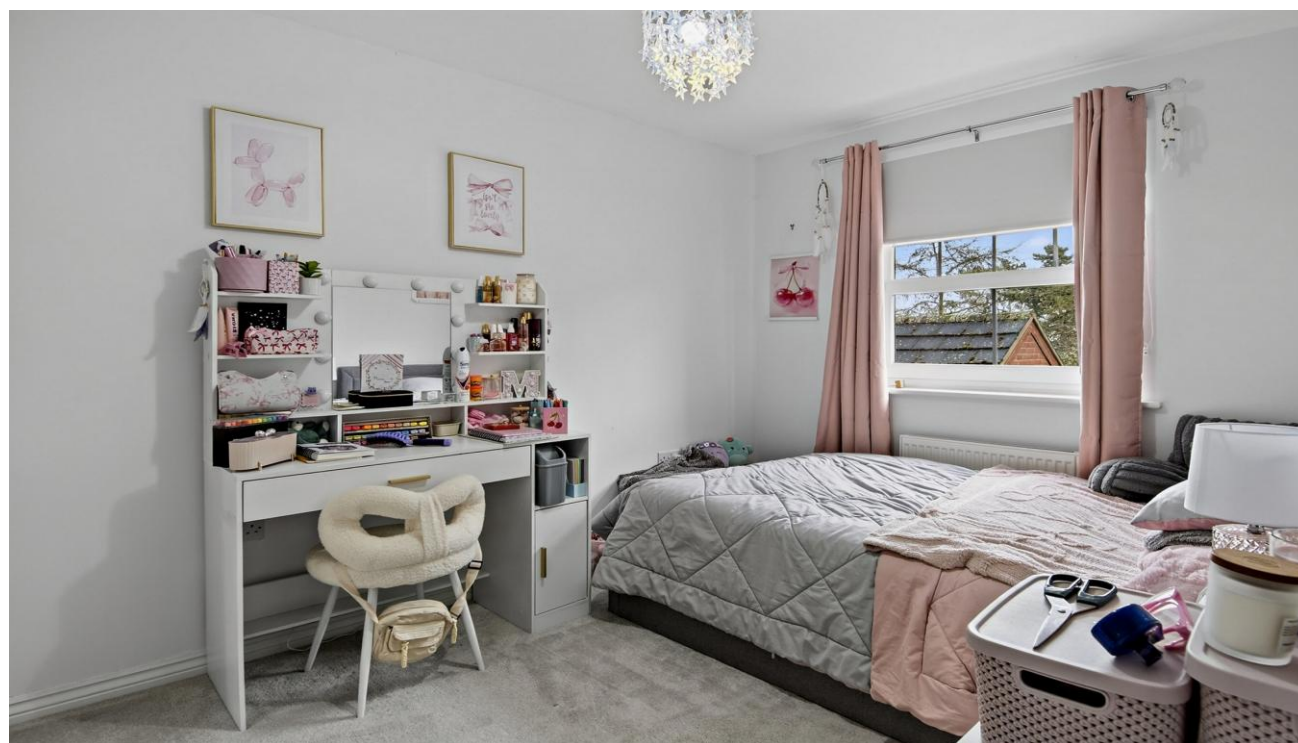


The rear of the property is truly impressive: a stunning open plan kitchen/dining/family room with skylights, spotlights, and wide bi fold doors that seamlessly connect the indoor space to the garden. The kitchen is fitted with modern units, integrated appliances, and generous worktop space, while the dining and seating area offers ample room for family gatherings and social occasions.

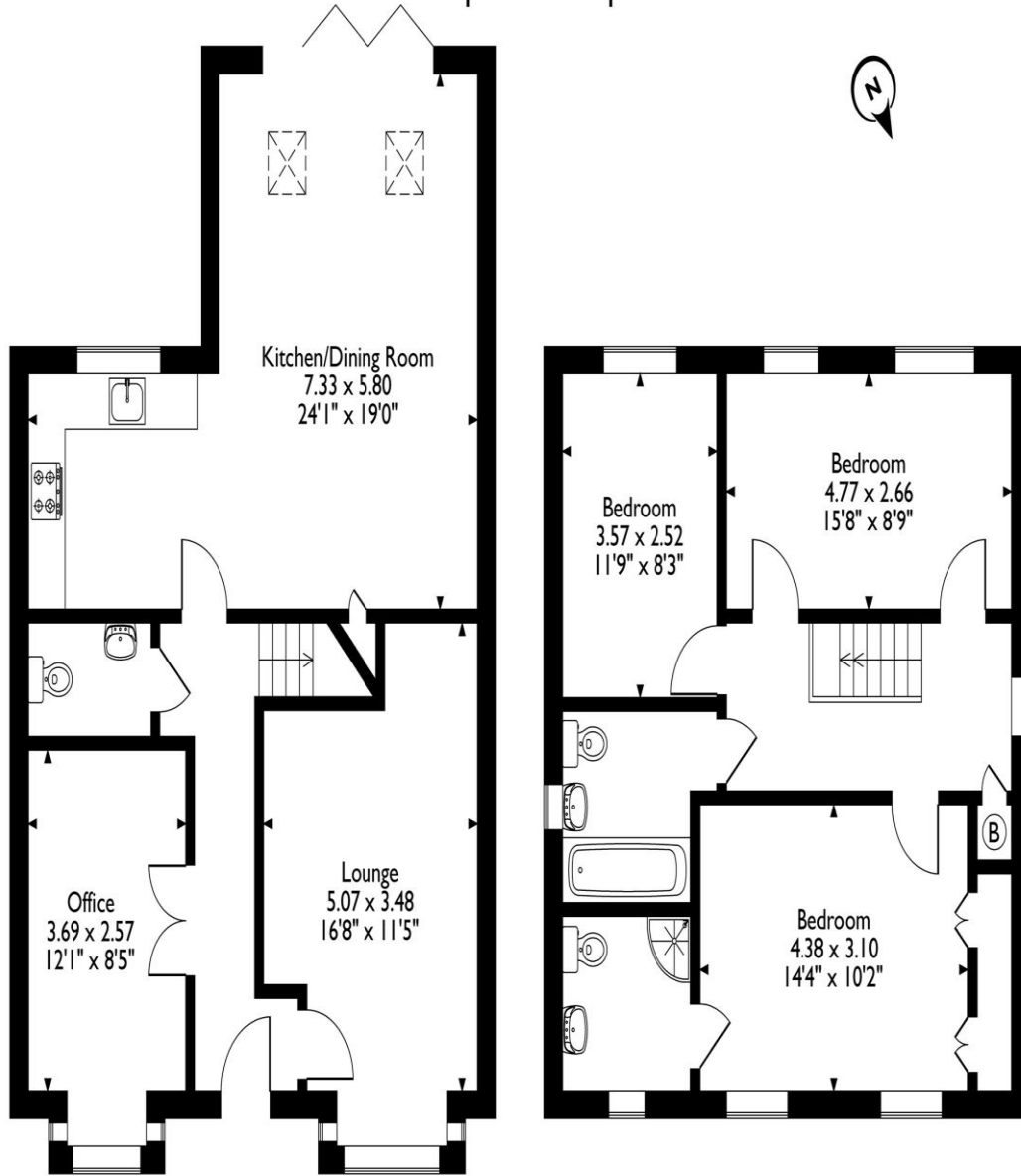
Upstairs, the property continues to impress with three double bedrooms. The principal bedroom benefits from fitted wardrobes and a stylish en suite shower room. A modern family bathroom with full tiling and a shower over bath serves the remaining bedrooms.

Outside, the rear garden has been thoughtfully landscaped to provide a low maintenance yet attractive outdoor space. A raised terrace leads down to an artificial lawn, ideal for year round use, with further patio seating to the side-perfect for entertaining or relaxing. The property also benefits from a driveway and single garage, offering excellent parking and storage.

Situated in Wittering, a short drive from Stamford, the home enjoys excellent transport links, local amenities, and highly regarded schooling. With its generous space, modern upgrades, and convenient location, this property



35, Hillside Gardens, Wittering, Peterborough
Approximate Gross Internal Area
128 Sq M/1378 Sq Ft



Ground Floor

First Floor

Please note that the location of doors, windows and other items are approximate and this floorplan is to be used for illustrative purposes only. Unauthorized reproduction is prohibited.

offers an excellent opportunity for families and commuters alike.

Selling your property?

Contact us to arrange a FREE home valuation.

 01780 752136

 38 St. Marys Street, STAMFORD, Lincolnshire, PE9 2DS

 stamford@hurfords.co.uk

 www.hurfords.co.uk



 SCAN ME



Hurfords is a trading name of Sharman Quinney Holdings Limited which is registered in England and Wales under company number 4174227, Registered Office is Cumbria House, 16-20 Hockliffe Street, Leighton Buzzard, Bedfordshire, LU7 1GN. VAT Registration Number is 500 2481 05.

1: These particulars do not constitute part or all of an offer or contract. 2: The measurements indicated are supplied for guidance only and as such must be considered incorrect. 3: Potential buyers are advised to recheck the measurements before committing to any expense. 4: Hurfords has not tested any apparatus, equipment, fixtures, fittings or services and it is the buyers interests to check the working condition of any appliances. 5: Hurfords has not sought to verify the legal title of the property and buyers must obtain verification from their legal representative. 6: Intending purchasers will be asked to produce identification documentation at a later stage and we would ask your co-operation in order that there will be no delay in agreeing the sale. Ref: SFD202372 - 0007

