



10 Wood Pond Close, Seer Green

Guide Price £569,950

Ashington Page

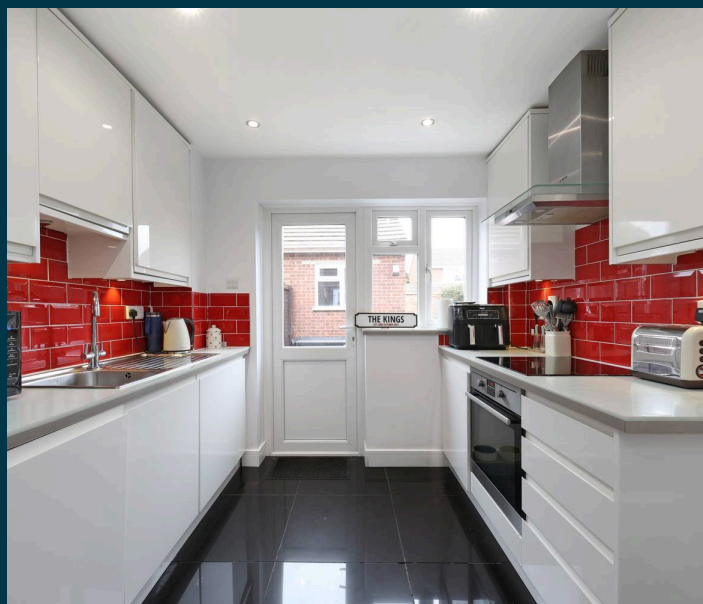
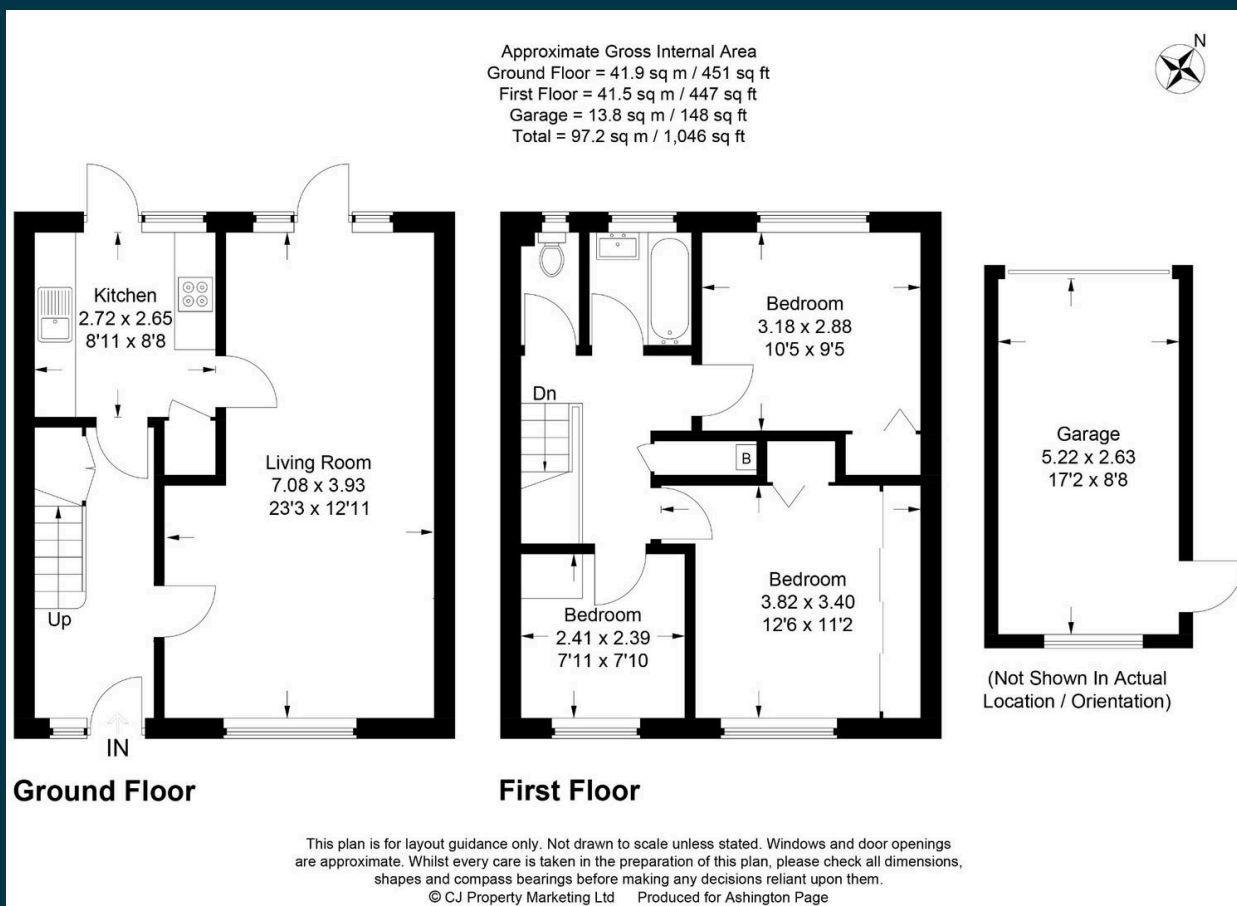
Set within the sought-after village of Seer Green, this beautifully presented three-bedroom terraced home is close to local amenities and fast rail links to London Marylebone. Offering a bright 23 ft dual-aspect sitting/dining room with garden access, modern kitchen, and versatile bedrooms – including a principal with wardrobes. The property includes a family bathroom, private rear garden with decked terrace and lawn, plus driveway parking and a garage.

Tenure: Freehold

Council Tax: E

EPC: C

These particulars are for guidance only. They are prepared and issued in good faith and are intended to give a fair summary of the property. Any description should not be relied on as a statement or representation of fact or that the property, or its services, are in good condition. The photographs show only certain parts of the property at the time they were taken. Any areas, measurements or distance given are approximate only. Any reference to alterations to, or use of, any part of the property is not a statement that any necessary planning, building regulations or other consent has been obtained. These matters must be verified by an intending purchaser. All statements contained in these particulars in relation to the property are made without responsibility of Ashington Page or its clients. Neither Ashington Page (nor any joint agents) nor any of their employees has any authority to make or give any representation or warranty whatsoever in relation to the property



01494 680018
info@ashingtonpage.co.uk
www.AshingtonPage.co.uk

