



Kilburn Lane, W10

£2,600 Per calendar month

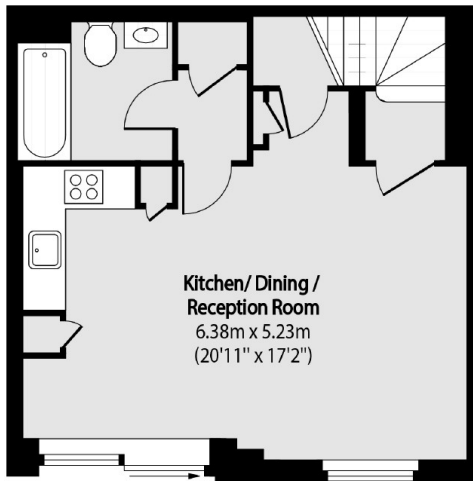
Set within a secure gated development, is this two double bedroom flat arranged over two floors. The property has an open plan fully integrated kitchen and reception room, a courtyard garden, two bathrooms and built-in storage throughout.

Kilburn Lane is close to the shops, cafes, bars and restaurants in Kensal Rise, and near to the green open spaces of Queen's Park. Transport links include Kensal Rise (Overground) and Kensal Green (Bakerloo & Overground), with Queen's Park (Bakerloo & Overground) within half a mile.

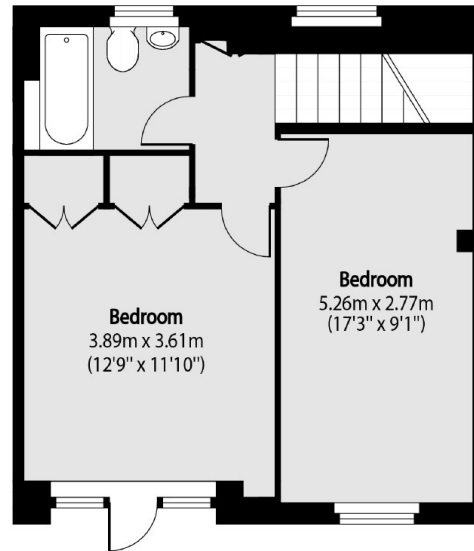
Features

- Two Double Bedrooms
- Open Plan Kitchen & Reception
- Secure Gated Development
- Off-Street Parking
- Close To Local Amenities
- Modern Development

Kilburn Lane, London, W10



Lower Ground Floor



Ground Floor

Total area (approx): 80.27 sq m (864 sq. ft)