



## PECKFORD PLACE, SW9

£515,000

Three Bedrooms  
Split Level  
Huge Private Garden  
Residents Parking  
Chain Free  
Energy Rating: C

@marshandparsons  
marshandparsons.co.uk

MARSH &  
PARSONS



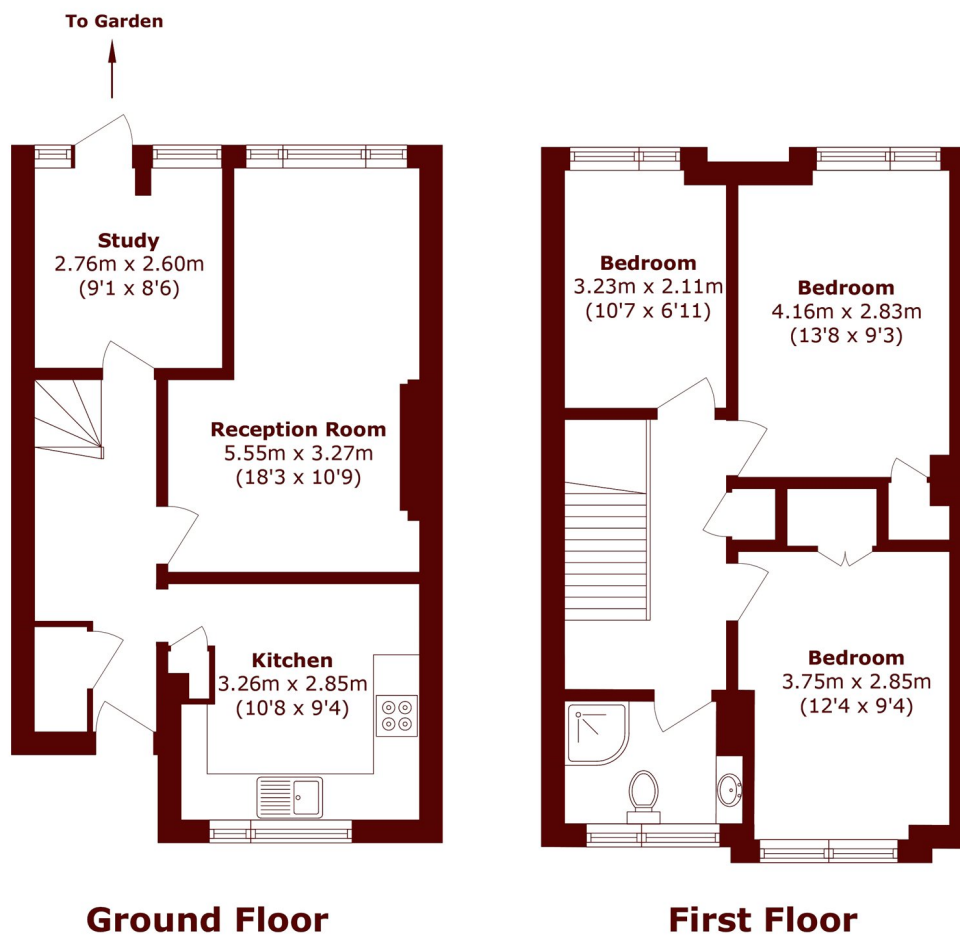
# ABOUT THE PROPERTY

An incredibly generous split-level maisonette spanning an impressive 897 sq ft comprising a well-equipped kitchen, a spacious living room and study with direct access to a superb private garden boasting a decked patio perfect for al-fresco dining, a lawn with raised flower beds and a large shed. Three bedrooms & a family bathroom are set over the first floor with handy additional built-in storage.

Peckford Place is a popular location close to the vast array of independent boutique shops, cafe's, bars & restaurants of central Brixton and the excellent transport links of Brixton & Stockwell Underground (Victoria & Northern Lines), National Rail and multiple bus routes.



# STEP INSIDE PECKFORD PLACE



Total area (approx.): 83.3 sq. m (896.6 sq. ft)

**Brixton**  
020 7733 4595

Energy Rating: C We aim to make our particulars both accurate and reliable. However, they are not guaranteed; nor do they form part of an offer or contract. If you require clarification on any points then please contact us, especially if you're traveling some distance to view. Please note that appliances and heating systems have not been tested and therefore no warranties can be given as to their good working order

**MARSH &  
PARSONS**