

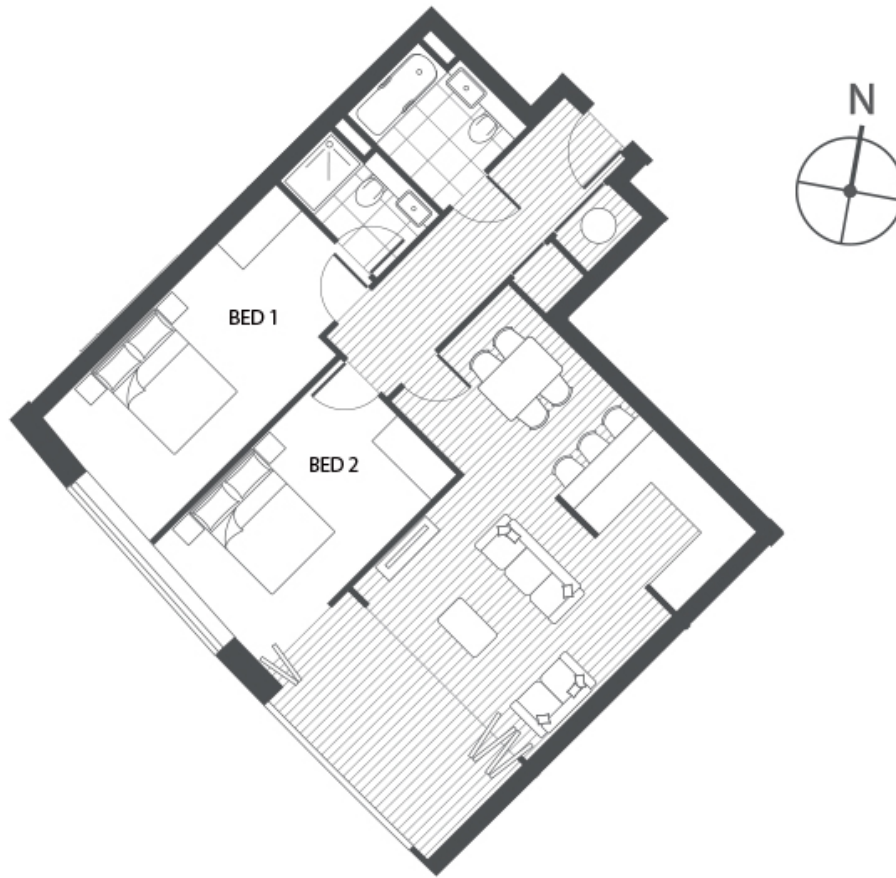


GATEWAY TOWER, E16

£2,400 pcm

Two bedroom two bathroom apartment with luxury finished interiors and sunrise views. Residents benefit from 24 hour concierge and communal landscaped gardens.

- Two Bedrooms
- Two Bathrooms
- Open Plan
- Concierge



2 Bed Apartment

Living/dining	5.9 x 5.5 m	19'4" x 18'0"
Kitchen area	2.8 x 1.8 m	9'2" x 5'10"
Bedroom 1	5.7 x 2.7 m	18'8" x 8'10"
Bedroom 2	4.6 x 2.7 m	15'0" x 8'10"
Sun Lounge	4.2 x 2.2 m	13'8" x 7'2"
Internal area	85.2 sq m	917 sq ft

LiFE RESIDENTIAL

16 Royal Crest Avenue,
London, E16 2TQ
Sales: 020 3846 3332
Lettings: 020 3846 3311

Energy Rating: B. We aim to make our particulars both accurate and reliable. However they are not guaranteed; nor do they form part of an offer or contract. If you require clarification on any points then please contact us, especially if you're traveling some distance to view. Please note that appliances and heating systems have not been tested and therefore no warranties can be given as to their good working order.