



Richmond Road, £170,000

- Great Location
- Close to M4 Links
- School Catchments Near
- Large Garden
- NO CHAIN!
- Ideal First Time Purchase or Rental
- EPC Rating: E



 3  1  1



About the property

Welcome to your dream family home! This charming 3-bedroom semi-detached property is ready to move in and offers a perfect blend of comfort and convenience. The spacious living area is ideal for family gatherings and cozy nights in, while the upstairs bathroom provides a functional space for everyday routines.

The true highlight of this home is the lovely, private garden, offering a serene escape and plenty of room for outdoor activities. Situated in an ideal location, you'll find yourself close to excellent schools and convenient M4 links, making commutes and school runs a breeze.

Whether you're looking for the perfect family home or a promising rental investment, this property ticks all the boxes with its desirable features and prime location.



Accommodation

Ground Floor

Entrance Hall

Lounge

20' 11" Max x 12' Max (6.38m Max x 3.66m Max)

Kitchen

10' 5" Max x 9' 11" Max (3.17m Max x 3.02m Max)

Bathroom

First Floor

Landing

Bedroom One

15' 1" x 9' 9" (4.60m x 2.97m)

Bedroom Two

11' x 9' 4" (3.35m x 2.84m)

Bedroom Three

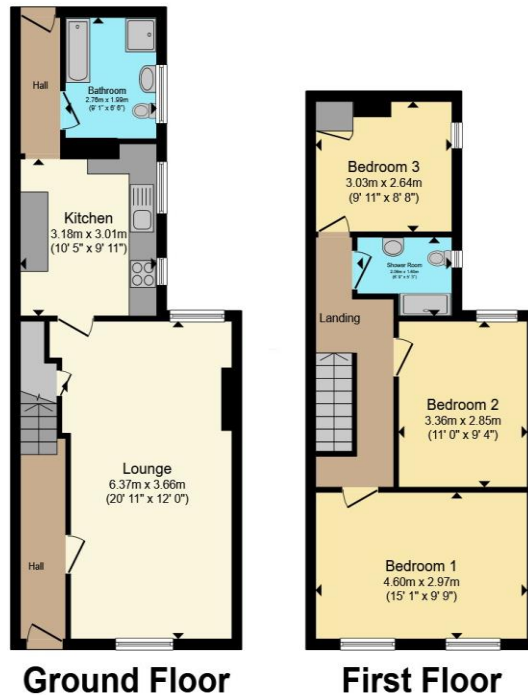
9' 11" x 8' 8" Max (3.02m x 2.64m Max)

Shower Room

01792 894422

gorseinon@peteralan.co.uk

Floorplan



Total floor area 90.5 m² (974 sq.ft.) approx

This floor plan is for illustrative purposes only. It is not drawn to scale. Any measurements, floor areas (including any total floor area), openings and orientation are approximate. No details are guaranteed, they cannot be relied upon for any purpose and they do not form part of any agreement. No liability is taken for any error, omission or misstatement. A party must rely upon its own inspection(s). Powered by www.propertybox.io



Important Information

Note while we endeavour to make our sales details accurate and reliable, if there is any point which is of particular interest to you, please contact the office and we will be pleased to confirm the position for you. We have not personally tested any apparatus, equipment, fixtures, fittings or services and cannot verify they are in working order or fit for their purposes. Nothing in these particulars is intended to indicate that carpets or curtains, furnishings or fittings, electrical goods (whether wired or not). Gas fires or light fittings or any other fixtures not expressly included form part of the property offered for sale. This computer generated Floorplan, if applicable, is intended as a general guide to the layout and design of the property. It is not to scale and should not be relied upon for dimensions. Tenure: We cannot confirm the tenure of the property as we have not had access to the legal documents. The buyer is advised to obtain verification from their solicitor or surveyor.

Peter Alan Limited is registered in England and Wales under company number 2073153, Registered Office is Cumbria House, 16-20 Hockliffe Street, Leighton Buzzard, Bedfordshire, LU7 1GN. VAT Registration Number is 500 2481 05. For activities relating to regulated mortgages and non-investment insurance contracts, Peter Alan Limited is an appointed representative of Connells Limited which is authorised and regulated by the Financial Conduct Authority. Connells Limited's Financial Services Register number is 302221. Most buy-to-let

