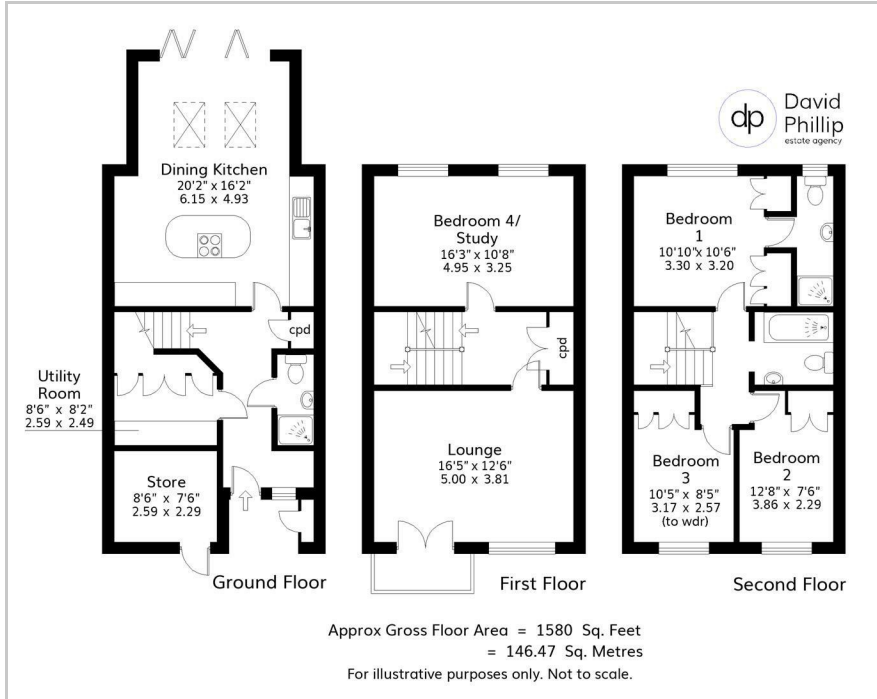




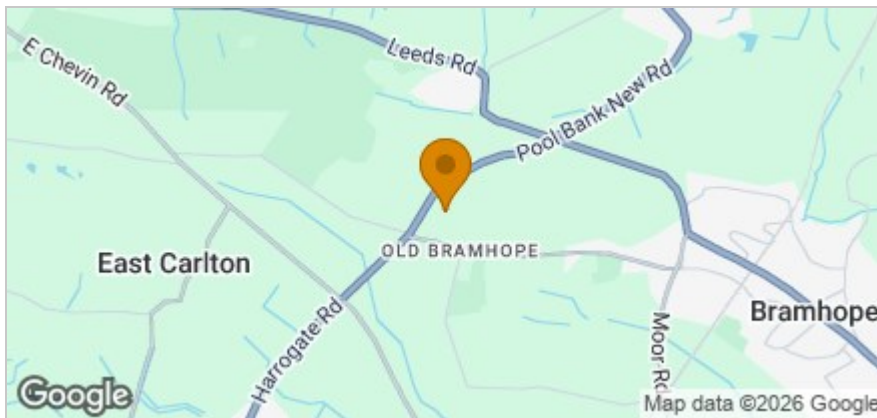
5 Hilton Grange, Bramhope, LS16 9LE

Price Guide £475,000

## Floor Plan



## Area Map



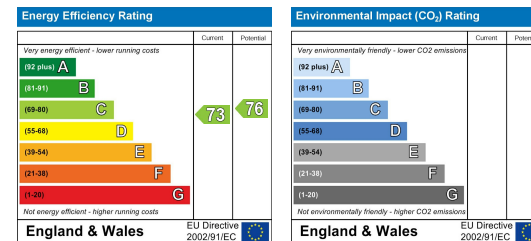
## Accommodation

- A Beautiful Mews Home with Four Double Bedrooms and Three Bathrooms
- Generous and Versatile Accommodation Extending Over Three Floors
- Stunning Open Plan Living Family Kitchen Diner – The Heart of the Home
- Enclosed Private Southerly Facing Rear Garden abutting The Green
- Commanding Fantastic Rural Views Across Picturesque Wharfedale
- Situated towards the Edge of the Prestigious Hilton Grange Development
- Freehold, Leeds City Council Tax Band F
- Energy Performance Certificate (EPC) Rating TBC

## Viewing

Please contact our David Phillip Estate Agents Office on 01134 676 400 if you wish to arrange a viewing appointment for this property or require further information.

## Energy Efficiency Graph



These particulars, whilst believed to be accurate are set out as a general outline only for guidance and do not constitute any part of an offer or contract. Intending purchasers should not rely on them as statements of representation of fact, but must satisfy themselves by inspection or otherwise as to their accuracy. No person in this firm's employment has the authority to make or give any representation or warranty in respect of the property.