

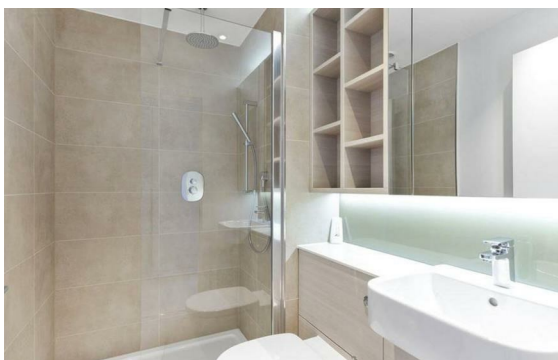
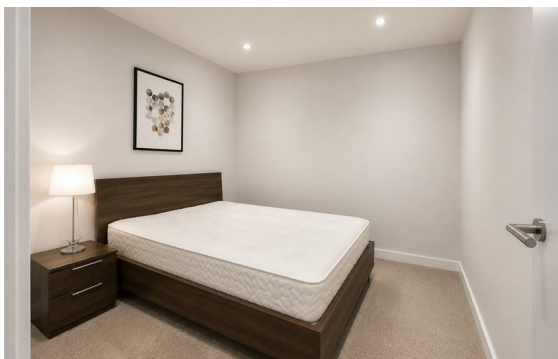


East Acton Lane, East Acton, London, W3

Rent £600 Per Month

2 Bed | 2 Bath | 1 Reception

Please call us on 020 7724 2233 or email us info@newingtonstates.com to book a viewing.



Brand new two-bedroom, two-bathroom apartment finished to a high standard and offering bright, contemporary living throughout.

The property comprises a spacious dual-aspect reception room with open-plan kitchen leading onto a private balcony, principal bedroom with fitted wardrobes and en-suite bathroom, a further well-sized double bedroom with built-in storage, and an additional modern bathroom.

Ideally located for excellent transport connections into Central London and beyond, with nearby Underground and rail links all within walking distance. Residents further benefit from landscaped communal gardens, local supermarkets and a wide range of shops, cafés and amenities nearby.

Energy Efficiency Rating: B

Agents Note: Whilst every care has been taken to prepare these particulars, they are for guidance purposes only. All measurements are approximate and are for general guidance purposes only and whilst every care has been taken to ensure their accuracy, they should not be relied upon and potential buyers/tenants are advised to recheck the measurements.

NEWINGTON
— ESTATES —

60 Upper Montagu Street

London

W1H 1SN

020 7724 2233

info@newingtonstates.com

<http://www.newingtonstates.com>