

## London Road, KT2

£389,000

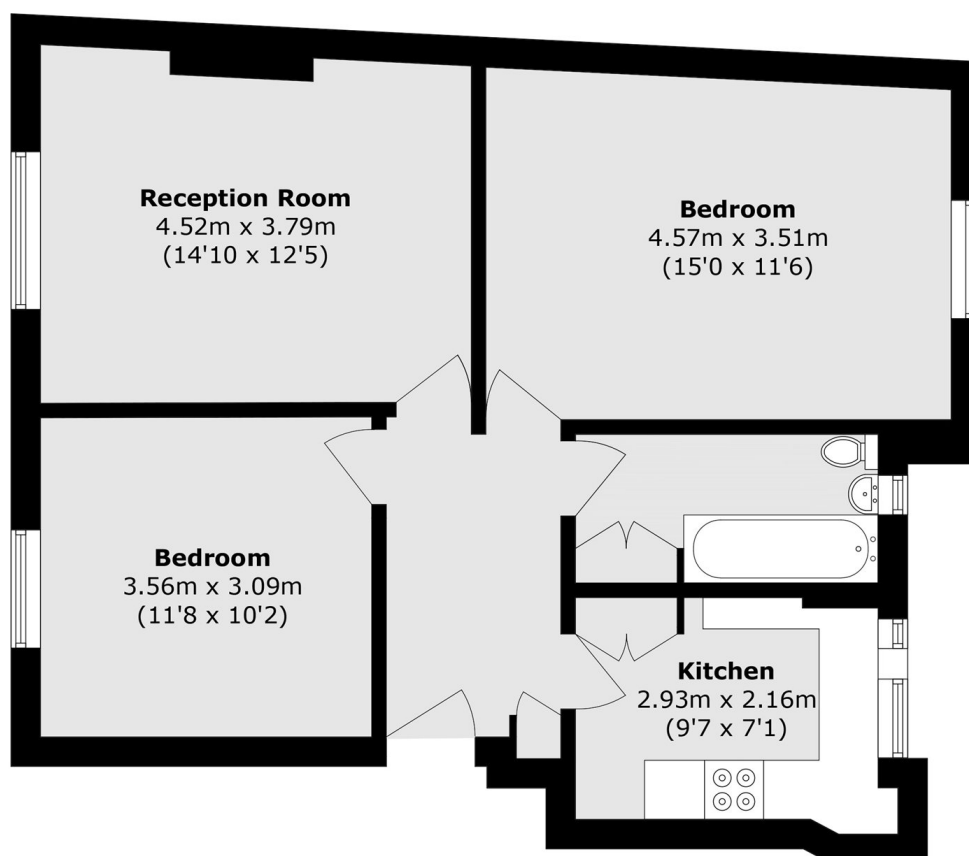
A recently refurbished, two double bedroom ground floor apartment offered for sale with no onward chain. This bright and spacious home features a sleek, modern kitchen, beautiful wood flooring, double glazing and a stylish bathroom. Further benefits include additional storage within the communal entrance and residents parking. Set within a popular period building, this is an ideal choice for those seeking modern living with character.

Norbiton Hall is a landmark development in Kingston, ideally positioned close to Asda, Lidl and an excellent selection of local shops and restaurants. Norbiton Station is just over 500 yards away, while Kingston town centre is a similar distance, with its mainline station less than half a mile away. This highly convenient location offers easy access to transport links and a vibrant range of amenities, making it an ideal place to enjoy everything Kingston has to offer.

### Features

- Two Double Bedrooms
- Ground Floor
- Sleek Modern Kitchen
- Residents Parking
- Extended Lease
- No Onward Chain

# London Road, Kingston Upon Thames, KT2



Total area (approx.): 63.4 sq. m (682.4 sq. ft)