



Earls Court Road, W8

£399,950

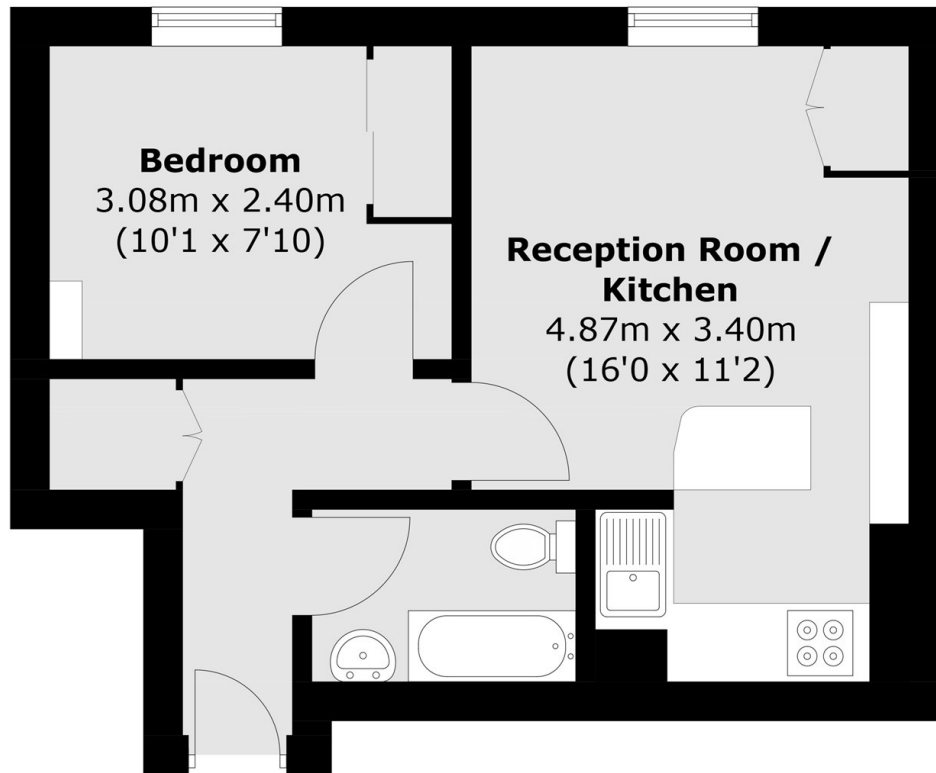
A well-presented, west facing, one double bedroom apartment set within an attractive period conversion in the heart of Kensington, W8. The property features a bright open-plan living and kitchen area, offering a modern and functional living space. Ideally suited to first-time buyers or investors, the apartment is offered to the market with no onward chain, allowing for a smooth and straightforward purchase.

Earls Court Road is conveniently situated on a bright and quiet road with access to superb shops and restaurants of Kensington High Street, as well as the many amenities and Earls Court Tube Station which offers excellent links across London.

Features

- 990 Years Lease
- No Ongoing Chain
- Perfect First Time Buyer
- Walking Distance Of Amenities
- Share Of Freehold
- Close To Earls Court Station

Earls Court Road, London, W8



Total area (approx.): 31.0 sq. m (333.7 sq. ft)