 **3**
Bedrooms

 **1**
Bathroom







NEXT2MOVE are offering this versatile three bedroom terraced house in the excellent location of Seaside Lane, Easington, this large family home would also make an ideal investment opportunity for those seeking to add to their portfolio, this superb home is adjacent to shops and near to schools and is ideally situated for commuting via the A19. VACANT





Novus Business Centre, NW Industrial Estate, Judson Road, Peterlee,
SR8 2QJ | chrishind@next2move.co.uk

01915878108

Vestibule entrance.

Hallway

Lounge 4.95m x 4.20m plus bay-Large bay window to the front elevation and two radiators with open plan access to;

Dining Room 4.09m x 4.06m-Having a recently fitted cast iron wood burner professionally installed as a very attractive centre point. Double glazed patio door to Yard and radiator.

Kitchen 3.89m x 3.86m-uPVC double glazed window, with wall, base and drawer cabinets. The Kitchen is in need of updating but workable until the time is right.

Lobby-Boiler cupboard (combi recently fitted)

Utility Room-Fitted base units with sink, plumbing for washing machine and ample space for appliances. Radiator and uPVC double glazed door to Yard.

Landing Area

Bedroom one 4.59m X 3.63m is a large double with uPVC double glazed window to the front elevation and radiator, with built in wardrobes.

Bedroom two 4.09m x 4.09m is also a large double room, uPVC double glazed window overlooking the rear, radiator.

Bedroom three 2.00m x 3.23m is of double proportions with uPVC double glazed window to the rear aspect with radiator.

The modern family bathroom comprises panel enclosed bath, Double shower space with electric shower, radiator, uPVC double glazed window, fully clad.

Separate WC-Low level WC, pedestal wash hand basin, uPVC double glazed window, radiator.

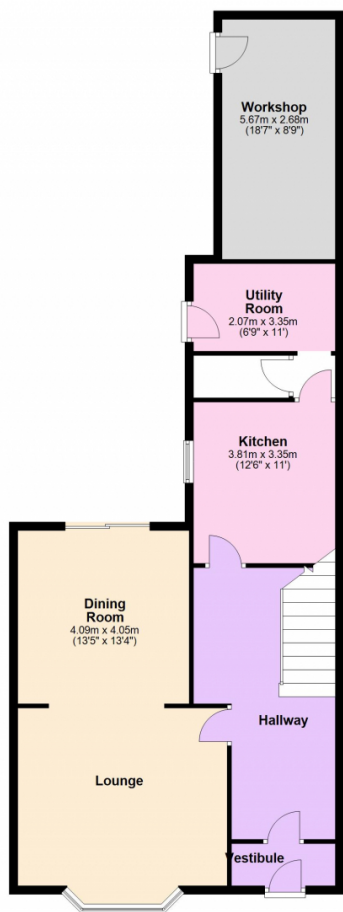
There are fixed loft ladders up to two loft rooms with power and light. Measuring 5.39m x 3.05m EACH, giving great scope for further living space.

Yard and workshop

This space is secured by newly fitted electric roller shutter doors. The workshop measures 5.67m x 2.70m, giving a great space to work from.

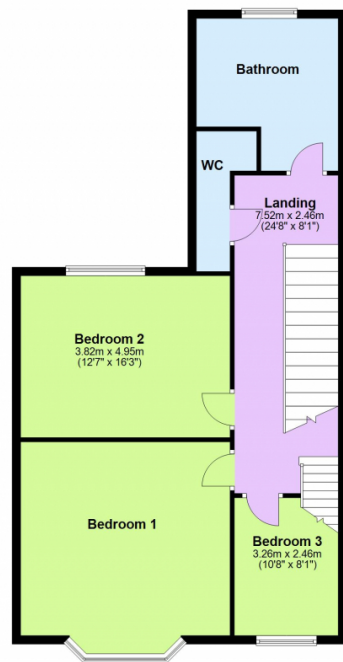
Ground Floor

Approx. 100.0 sq. metres (1076.3 sq. feet)



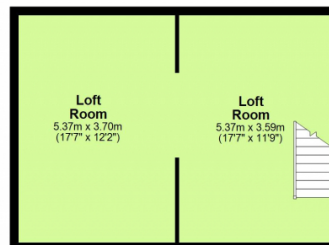
First Floor

Approx. 84.6 sq. metres (910.6 sq. feet)



Second Floor

Approx. 39.7 sq. metres (427.1 sq. feet)



Total area: approx. 224.3 sq. metres (2414.0 sq. feet)

