



Leman Street, E1

£4,500 Per calendar month

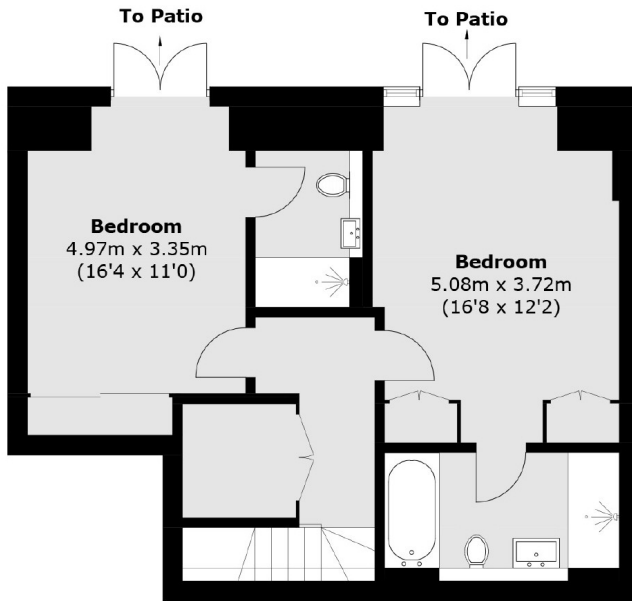
An immaculately presented two double bedroom duplex apartment occupying the ground and lower-ground floors of this magnificent Grade II listed building on Leman Street. This apartment has access to the popular Goodman Fields facilities and is perfect for working professionals in the City.

Sterling Mansions is in a central location with Spitalfields Market just moments away which is well equipped with many shops and restaurants, along with Brick Lane that has lots of bars and clubs. The development has a concierge, gym, cinema and swimming pool.

Features

- Two Double Bedrooms
- Two Bathroom
- Split Level
- Private Terrace
- New Build
- Aldgate Underground

Leman Street, London, E1



Lower Ground Floor



Ground Floor

Total area (approx.): 111.8 sq. m (1,203.4 sq. ft)