



## Caersalem Chapel The offers over £330,000

- Set in a popular location
- Gated car park
- Toilet facilities
- Detached former chapel
- Character property
- EPC Rating: Exempt



 0  0  3



## About the property

A rare opportunity to acquire a detached former chapel offering versatile space and character in a sought-after location in Merthyr Tydfil.

Set behind secure gates with private car parking, this distinctive property blends charm and practicality. Set on one floor, the property consists of an entrance porch and hallway leading to a kitchen/dining room. The heart of the chapel is a spacious hall with high ceilings and an abundance of character, leading to an additional hall. The functionality of the chapel is boasted by the addition of toilet facilities and a reception room.

Set in a popular location in Merthyr Tydfil, close to local amenities and transport links. Viewing highly advised.

### Agents Note

Currently the vendors details do not match the registered title at Land Registry. Please ask the branch for more details.



## Accommodation

### Porch

### Hallway

### Hall 1

Irregular Shaped Room 40' 3" Max x 40' 3" Max ( 12.27m Max x 12.27m)

### Hall 2

34' 4" Max x 19' 7" Max ( 10.46m Max x 5.97m Max )

### Kitchen/Dining Room

16' 4" Max x 13' 1" Max ( 4.98m Max x 3.99m Max )

### Toilet 1

### Toilet 2

### W.C

### Reception Room

### Boiler Room

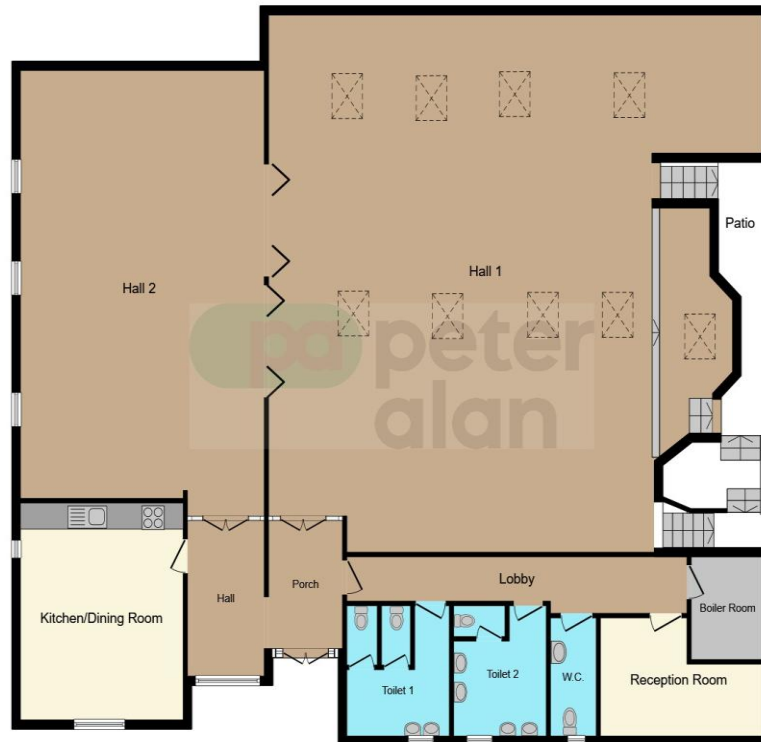
### Agents Notes

Currently the vendors details do not match the registered title at Land Registry. Please ask the branch for more details.

01685 722223

merthyrdyfil@peteralan.co.uk

## Floorplan



This floor plan is for illustrative purposes only. It is not drawn to scale. Any measurements, floor areas (including any total floor area), openings and orientation are approximate. No details are guaranteed, they cannot be relied upon for any purpose and they do not form part of any agreement. No liability is taken for any error, omission or misstatement. A party must rely upon its own inspection(s). Powered by [www.focalagent.com](http://www.focalagent.com)

## Important Information

Note while we endeavour to make our sales details accurate and reliable, if there is any point which is of particular interest to you, please contact the office and we will be pleased to confirm the position for you. We have not personally tested any apparatus, equipment, fixtures, fittings or services and cannot verify they are in working order or fit for their purposes. Nothing in these particulars is intended to indicate that carpets or curtains, furnishings or fittings, electrical goods (whether wired or not). Gas fires or light fittings or any other fixtures not expressly included form part of the property offered for sale. This computer generated Floorplan, if applicable, is intended as a general guide to the layout and design of the property. It is not to scale and should not be relied upon for dimensions. Tenure: We cannot confirm the tenure of the property as we have not had access to the legal documents. The buyer is advised to obtain verification from their solicitor or surveyor.

Peter Alan Limited is registered in England and Wales under company number 2073153, Registered Office is Cumbria House, 16-20 Hockliffe Street, Leighton Buzzard, Bedfordshire, LU7 1GN. VAT Registration Number is 500 2481 05. For activities relating to regulated mortgages and non-investment insurance contracts, Peter Alan Limited is an appointed representative of Connells Limited which is authorised and regulated by the Financial Conduct Authority. Connells Limited's Financial Services Register number is 302221. Most buy-to-let

