



## Ladbroke Grove, W11

£3,500 Per calendar month

A spacious two double bedroom apartment on the second floor with wooden flooring throughout, a modern open plan kitchen and a separate study area.

The property is located 0.1 miles away from both Ladbroke Grove station and Portobello Road, while all the shop, bars and restaurants of Westbourne Grove are a short distance away.

### Features

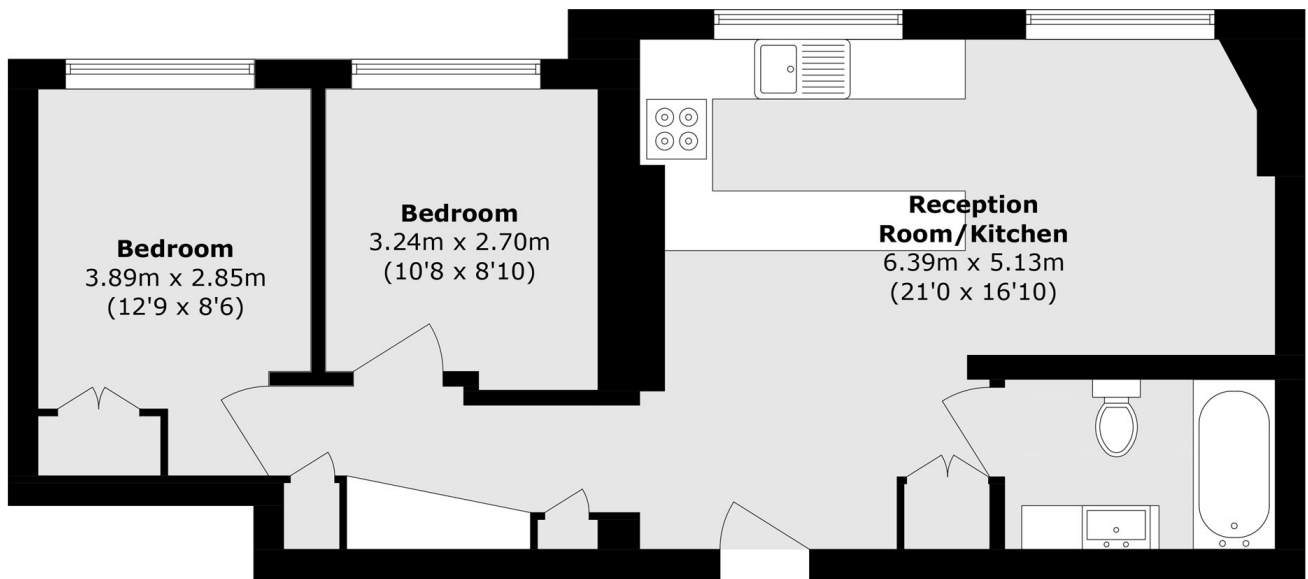
- Two Double Bedrooms
- Additional Study Room
- Open Plan Kitchen
- Wooden Flooring Throughout
- High Ceilings
- Second Floor Flat



**Ladbroke Grove, W11**



# Ladbroke Grove, London, W11



## Second Floor

Total area (approx.): 59.1 sq. m (636.1 sq. ft)