



Price
£250,000

Leasehold

3x  2x  1x 

**Green Street, Ryde, Isle
of Wight, PO33**

OVER 60?

Secure this property
for up to **59% less!**

Pittis 
Helping you move forwards



Main features

- Terraced house with accommodation over three storeys
- Open plan living area
- Ground floor and first floor shower rooms
- Set within easy access of Ryde town centre
- Accessible to all transport links

Accommodation

GROUND FLOOR

Lounge : 11'3 x 11'0 (3.43m x 3.36m)
 Dining Area: 11'6 x 10'0 (3.51m x 3.05m)
 Kitchen : 12'4 x 10'4 (3.76m x 3.15m)
 Shower Room
 Conservatory: 10'9 x 9'6 (3.28m x 2.90m)

FIRST FLOOR

Landing
 Bedroom 1: 11'6 x 11'2 (3.51m x 3.41m) plus 5'7 into bay x 2'10 (1.70m x 0.86m)
 Bathroom

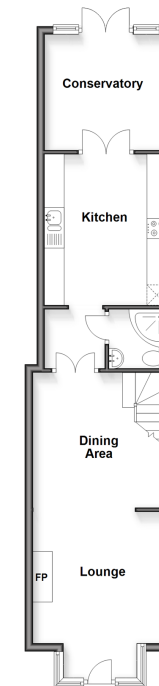
SECOND FLOOR

Landing
 Bedroom 2 : 11'7 x 8'9 (3.53m x 2.67m)
 Bedroom 3: 10'3 x 10'0 (3.13m x 3.05m)

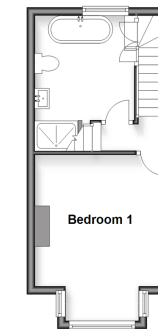
OUTSIDE

Front Garden
 Rear Garden
 Summer house

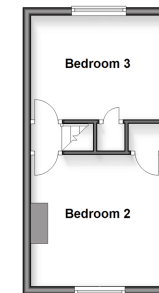
Ground Floor
 Approx. 50.3 sq. metres (541.8 sq. feet)



First Floor
 Approx. 24.4 sq. metres (262.4 sq. feet)



Second Floor
 Approx. 22.8 sq. metres (245.2 sq. feet)



Call Ryde - 01983 564646 ■ pittis.co.uk

- If buying to let, the energy rating will need to be improved to at least 'E' rating before you can let the property
- Appliances & services are untested, dimensions are approximate and floor plans are not to scale

- Legal advice should be taken to verify fixtures/fittings, planning, alterations and/or lease details
- Through a Homewise Home For Life Plan people aged 60+ can secure this property for up to 50% less, by purchasing a Lifetime Lease.



60426868/20251006/JH/AGAN