

Campden Hill Gardens, W8

£2,396 Per calendar month

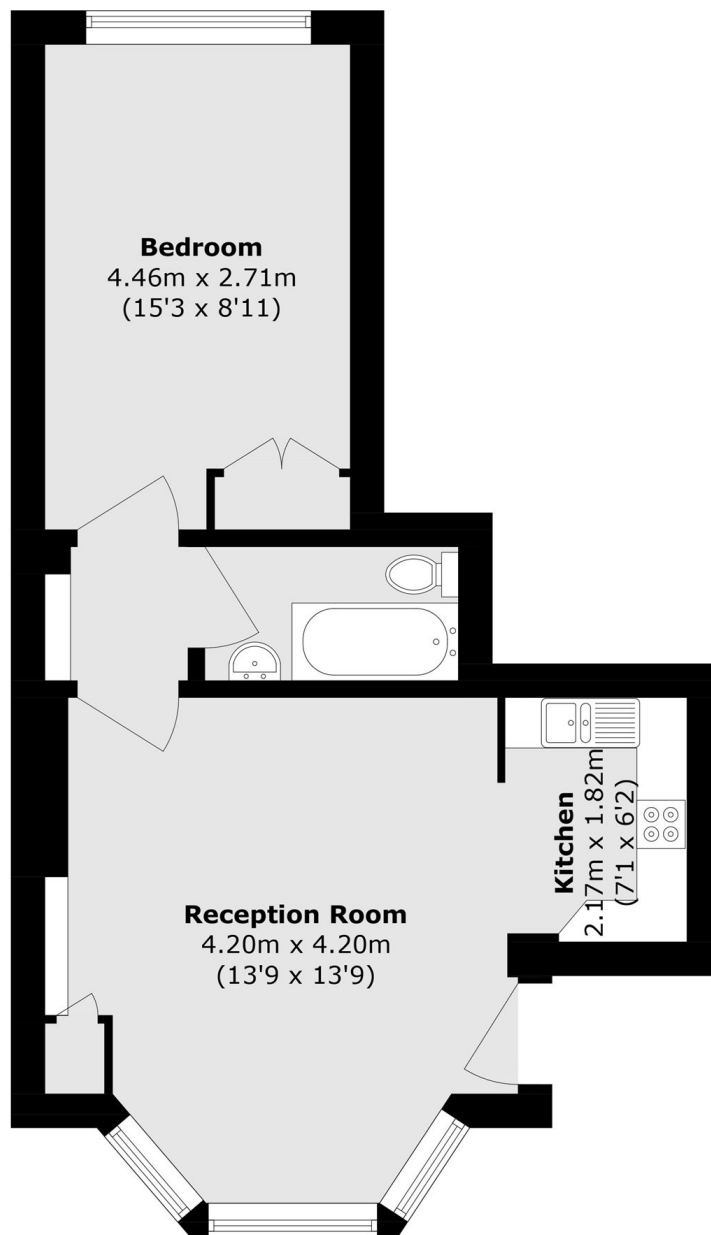
A bright and recently decorated one double bedroom flat with a private entrance, featuring a west-facing living/dining room with wood flooring and a bay window providing excellent natural light.

A highly desirable street set moments from the varied amenities and transport links of both Notting Hill Gate and High Street Kensington. The green open spaces of Holland Park are also within easy reach.

Features

- One Double Bedroom
- Own Entrance
- West Facing Living/Dining
- Open Plan Kitchen
- Bathroom With Shower
- Notting Hill Gate Station

Campden Hill Gardens, London, W8



Lower Ground Floor

Total area (approx.): 37.2 sq. m (400.4 sq. ft)