

Leverton Street  
Kentish Town, NW5

**Dexters**







## About the property

Located on one of Kentish Town's most desirable streets, this Victorian house features five double bedrooms, three bathrooms, and a secluded west-facing garden.

On the ground floor, you are welcomed by impressive ceiling heights, two double reception rooms, a kitchen, and a dining room opening onto the garden.

The first floor has two double bedrooms, both with en suite bathrooms, plus a versatile study that can serve

as a fifth bedroom. On the second floor there are two bedrooms and a bathroom.

Leverton Street is a quiet residential road close to Kentish Town's Northern line and Thameslink stations, as well as a wide range of local shops and amenities. The property also falls within the catchment area for Eleanor Palmer Primary School, with Hampstead Heath nearby for green open spaces.



## Key features

- Five Bedrooms
- Three Bathrooms
- Excellent Condition
- West Facing Garden
- End of Terrace
- Great Location

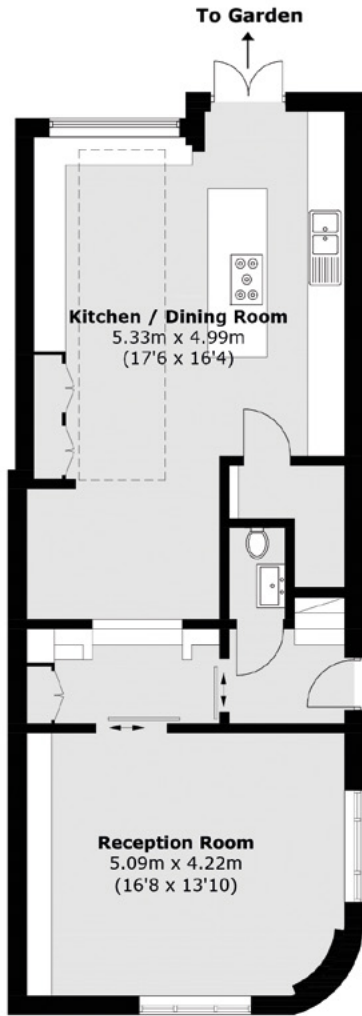




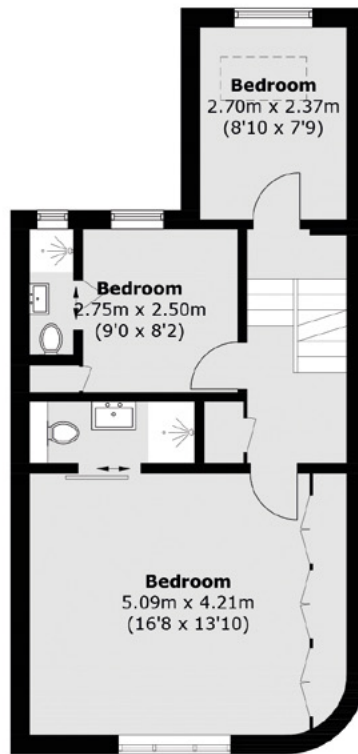




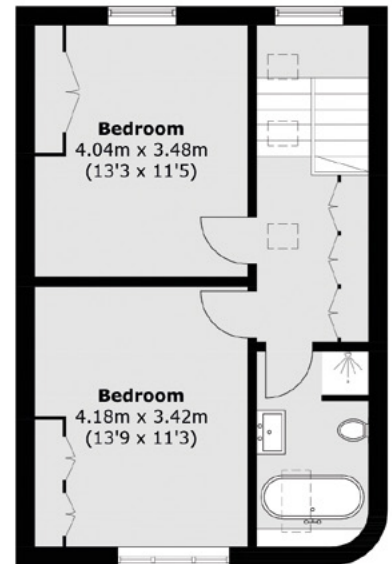




**Ground Floor**



**First Floor**



**Second Floor**

**TOTAL APPROX. FLOOR AREA 1,770.6 SQ. FT (164.5 SQ. M)**

Energy Rating: D. We aim to make our particulars both accurate and reliable. However they are not guaranteed; nor do they form part of an offer or contract. If you require clarification on any points then please contact us, especially if you're traveling some distance to view. Please note that appliances and heating systems have not been tested and therefore no warranties can be given as to their good working order.



Dexters Kentish Town & Camden  
274 Kentish Town  
London, NW5 2AA  
020 7483 6390

**Dexters**