

# Belle Vue Terrace

BELLERBY

LOVE PROPERTY.

LOVE THE JOURNEY



# Arriving home...

Situated within the highly regarded village of Bellerby, on the edge of the Yorkshire Dales National Park, 5 Belle Vue Terrace enjoys an enviable position surrounded by some of North Yorkshire's most beautiful countryside. Just a short drive from both Leyburn and Richmond, the village is renowned for its welcoming community, traditional character and access to exceptional walking routes right from the doorstep.

Quietly tucked away, this charming period home presents an exciting opportunity for buyers seeking a property they can truly make their own.

Stepping inside, a traditional entrance hallway immediately reflects the character of the home, with features typical of properties of this era. To the left, the principal reception space unfolds into a spacious open-plan lounge and dining room. High ceilings, dual-aspect windows and a log-burning stove combine to create a room that feels both bright and inviting, offering a wonderful balance of character and comfort throughout the seasons.

Beyond the lounge, the dining area provides ample space for family meals, entertaining guests or simply gathering together at the end of the day. A window overlooks the rear courtyard, while a useful understairs cupboard offers valuable storage.

The kitchen sits to the rear of the property and offers excellent potential for modernisation. With direct access to the outside space, it provides a practical layout and an exciting opportunity for a new owner to create a kitchen tailored to their own style and requirements.



# Time for bed...

Upstairs, the property offers two well-proportioned bedrooms. The principal bedroom, positioned at the front of the home, is the larger of the two and enjoys an abundance of natural light from two windows. A charming feature fireplace adds character and creates an attractive focal point within the room.

The second bedroom is another generous space, ideal as a guest room, teenager's bedroom, or adaptable to suit a variety of lifestyle needs.

The house bathroom is conveniently located at the top of the stairs and is fitted with a classic white suite, complemented by an electric shower over the bath. Bright and airy, it provides the perfect setting for a refreshing start to the day or a relaxing soak in the evening.

A further staircase leads to the top floor, where you'll find a versatile additional room currently used as a bedroom. This flexible space could equally serve as a home office, hobby room, dressing room, or snug, adapting effortlessly to meet your individual requirements.

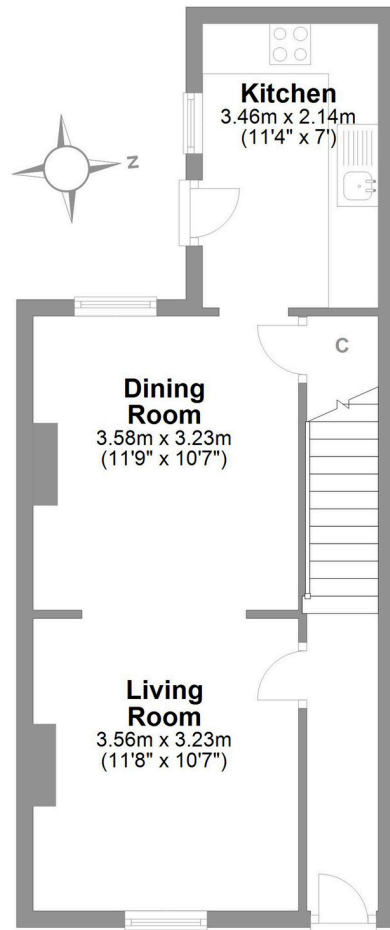




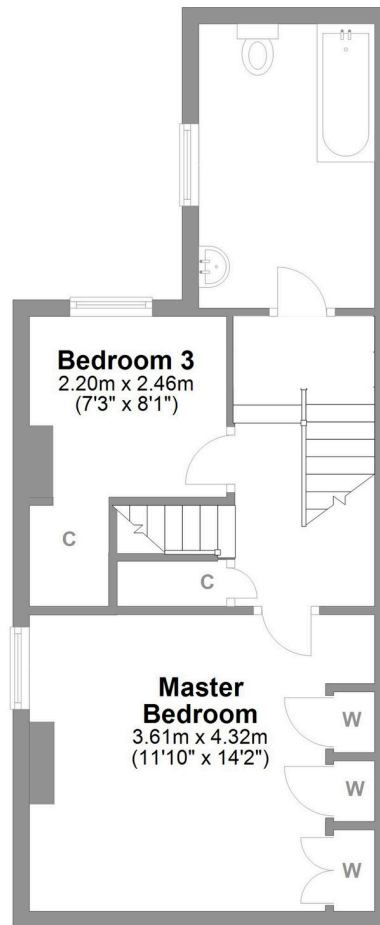
## Head outside...

Externally, the property enjoys a charming front garden that will appeal to keen gardeners and those who enjoy spending time outdoors. Thoughtfully arranged and easy to maintain, the space features raised planting beds alongside a variety of pots and containers, creating a colourful and inviting setting throughout the seasons. Whether you're growing your own vegetables, cultivating flowers, or simply enjoying a morning coffee in the sunshine, this delightful garden offers plenty of potential.

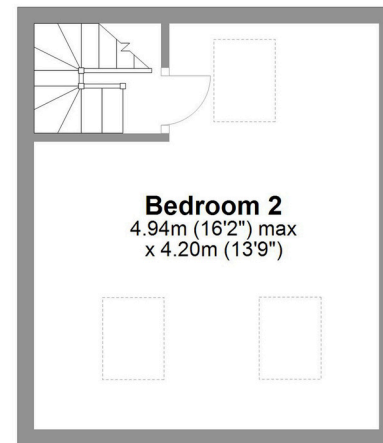
To the rear of the property, a private enclosed yard provides a practical outdoor space, ideal for additional seating, storage, or simply enjoying a quiet spot to relax. Low maintenance and easily accessible, it complements the front garden perfectly.



**Ground Floor**  
Approx. 38.0 sq. metres (409.3 sq. feet)



**First Floor**  
Approx. 38.0 sq. metres (409.3 sq. feet)



**Second Floor**  
Approx. 20.5 sq. metres (220.1 sq. feet)

## Belle Vue Terrace Bellerby

Total area: approx. 96.5 sq. metres (1038.8 sq. feet)

### Finer Details

Postcode: DL8 5QL  
Freehold  
Council Tax Band: C  
EPC Rating: E

# LOVE PROPERTY

Whilst every attempt has been made to ensure the accuracy of the floorplans contained here, measurements of doors, windows, rooms and any other items are approximate and no responsibility is taken for any error, omission or mis-statement. This plan is not drawn to scale and is for illustrative purposes only & should be used as such by any prospective purchaser. Created especially for Love Property by Vue3sixty Ltd