



FLEETWOOD ROAD, NW10

£969 per week

Five bedrooms
Two bathrooms
Two reception rooms
Semi detached house
Garden
Off street parking

@marshandparsons
marshandparsons.co.uk

MARSH &
PARSONS



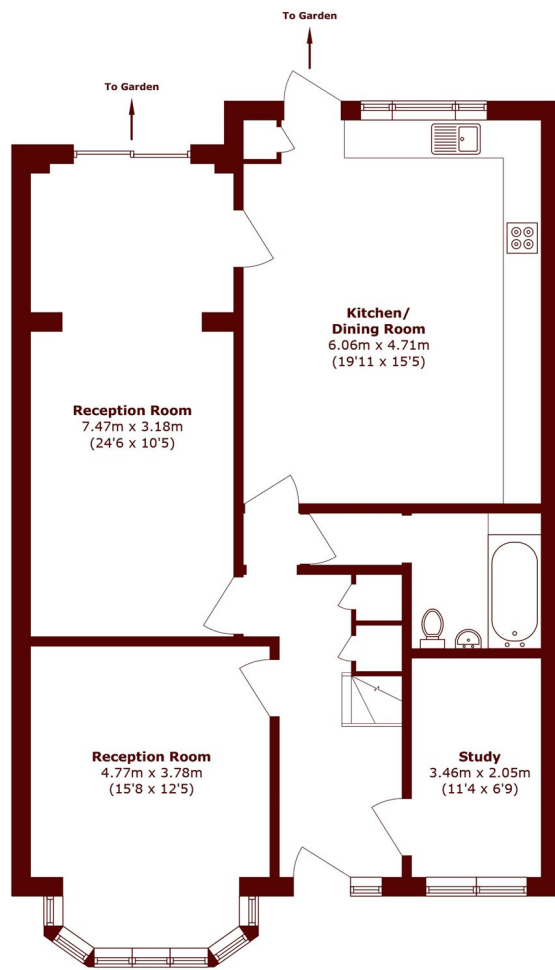
ABOUT THE PROPERTY

This five bedroom two bathroom semi detached family home, spread over two floors offers a spacious and entertaining living space with an integrated kitchen, private rear garden and off street parking.

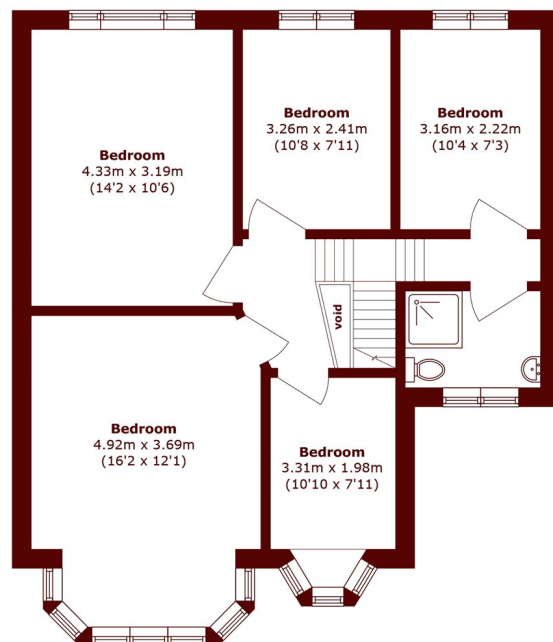
Fleetwood Road is located within walking distance to Dollis Hill Underground Station & Willesden Green Underground Station (Jubilee Line) and within easy reach of local amenities and Gladstone Park.



STEP INSIDE FLEETWOOD ROAD



Ground Floor



First Floor

Total area (approx.): 160.5 sq. m (1727.6 sq. ft)
(Excluding Void)

Willesden Green
020 8939 1780

Energy Rating: C We aim to make our particulars both accurate and reliable. However, they are not guaranteed; nor do they form part of an offer or contract. If you require clarification on any points then please contact us, especially if you're traveling some distance to view. Please note that appliances and heating systems have not been tested and therefore no warranties can be given as to their good working order

**MARSH &
PARSONS**