

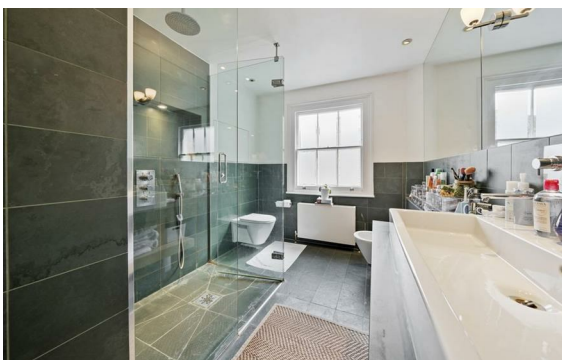


[Down Street, Mayfair, London, W1J](#)

Rent £1,750 PCM

2 Bed | 2 Bath | 1 Reception

*Please call us on 020 7724 2233 or email us [info@newingtonstates.com](mailto:info@newingtonstates.com) to book a viewing.*



Elegant contemporary living in a sought-after Mayfair setting. A well-presented two-bedroom apartment offering modern interiors and a well-balanced layout in a prime central London location. The property features a spacious reception room with a dining area, complemented by a sleek kitchen fitted with high-quality appliances.

Both bedrooms are comfortable doubles with excellent storage, served by a stylish bathroom and a separate shower room. Further benefits include lift access and an enviable position just moments from Hyde Park, with a wide range of amenities and transport links nearby.

EPC rating: C

## Energy Efficiency Rating: C

Agents Note: Whilst every care has been taken to prepare these particulars, they are for guidance purposes only. All measurements are approximate and are for general guidance purposes only and whilst every care has been taken to ensure their accuracy, they should not be relied upon and potential buyers/tenants are advised to recheck the measurements.

**NEWINGTON**  
— ESTATES —

60 Upper Montagu Street

London

W1H 1SN

020 7724 2233

[info@newingtonstates.com](mailto:info@newingtonstates.com)

<http://www.newingtonstates.com>