



Guide Price
£385,000

Freehold

4x  2x  1x 

**Hurst Point View,
Totland, Isle of Wight,
PO39**

OVER 60?

Secure this property
for up to **59% less!**

Pittis 
Helping you move forwards



Main features

- Large semi-detached family house with new build warranties
- Outstanding sea views from Bedroom 1 balcony
- Open plan living with flexible accommodation
- Private cul-de-sac near Colwell Bay
- Sunny rear garden & off road parking for 2 cars

Accommodation

GROUND FLOOR

Hallway

Bedroom 2: 10'0 x 8'9 (3.05m x 2.67m)

Bathroom: 5'6 x 5'4 (1.68m x 1.63m)

Bedroom 4: 12'2 x 9'6 (3.71m x 2.90m)

Bedroom 3: 6'8 x 6'0 (2.03m x 1.83m)

FIRST FLOOR

Landing

Lounge: 15'9 x 12'2 (4.80m x 3.71m)

Kitchen: 15'3 x 8'9 (4.65m x 2.67m)

SECOND FLOOR

Bedroom 1: 16'0 x 13'3 (4.88m x 4.04m)

Ensuite Shower Room: 6'4 x 5'9 (1.93m x 1.75m)

Office: 7'3 x 6'1 (2.21m x 1.86m)

OUTSIDE

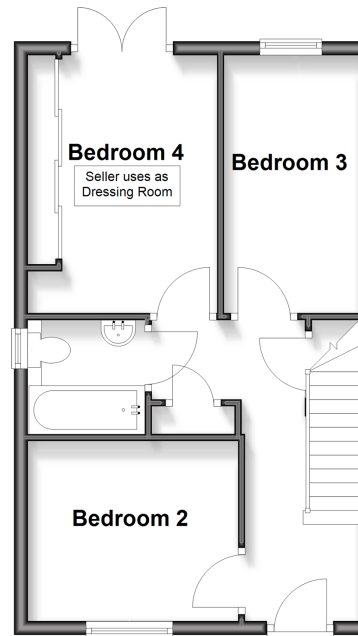
Front Garden

Off-Road Parking

Rear Garden

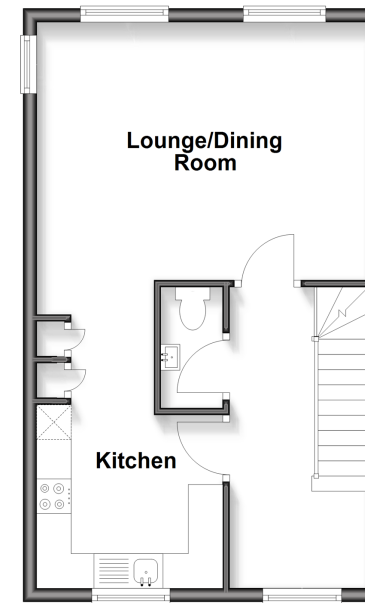
Ground Floor

Approx. 39.3 sq. metres (423.1 sq. feet)



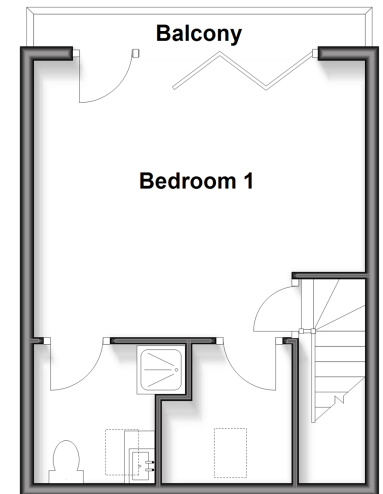
First Floor

Approx. 39.3 sq. metres (423.1 sq. feet)



Second Floor

Approx. 29.4 sq. metres (316.2 sq. feet)



Call Freshwater - 01983 756222 ■ pittis.co.uk

- Legal advice should be taken to verify fixtures/fittings, planning, alterations and/or lease details
- Through a Homewise Home For Life Plan people aged 60+ can secure this property for up to 50% less, by purchasing a Lifetime Lease.

- Appliances & services are untested, dimensions are approximate and floor plans are not to scale



60218035/20251129/REP/CG