



Unity Lane, TW3

£310,000

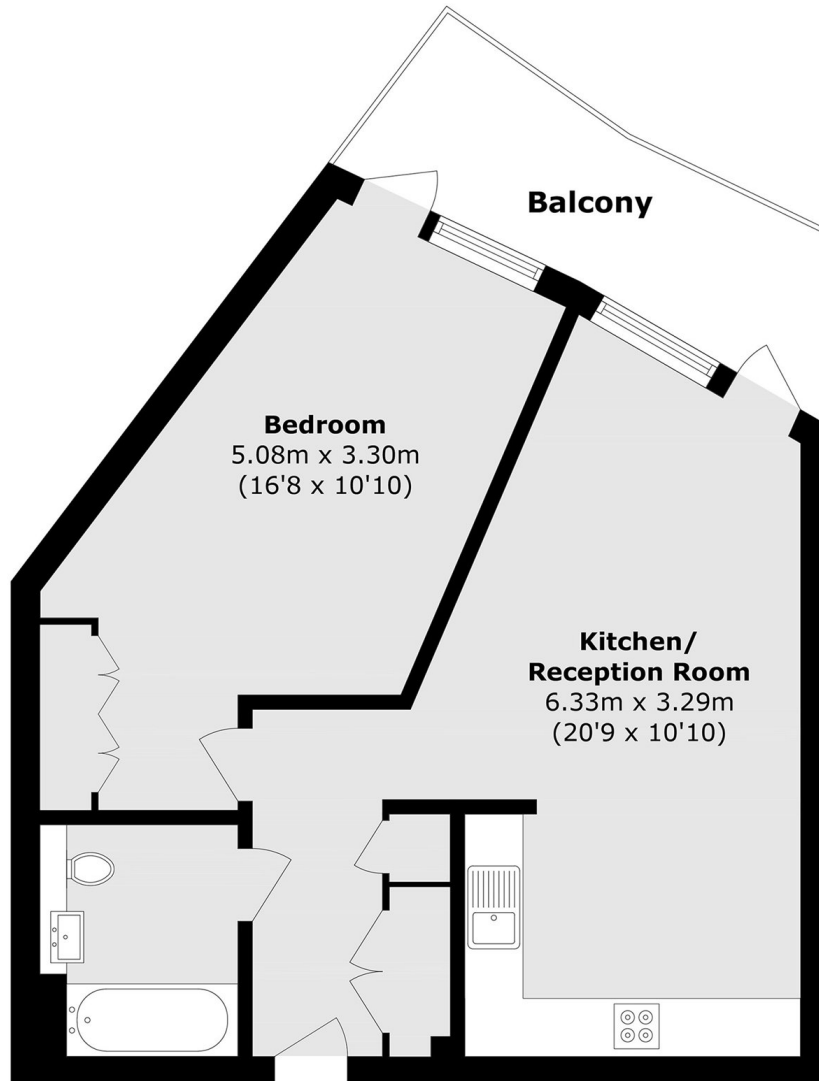
A superbly spacious one double bedroom apartment within the exclusive High Street Quarter development. The property is situated on the upper floors and offers a private balcony, long lease and stunning communal gardens. Presented in beautiful condition, the property is ideal for first time buyers and investors alike, sold with no onward chain.

Curtis House is a popular and sought after development located close to Heathrow airport via Hounslow Central and East Tube Station (Piccadilly line) and 30 minutes into central London with other travel options across Hounslow Bus station, Hounslow train station (national rail services) and the High Street with a variety of shops, bars and restaurants. There are excellent amenities nearby and easy access to the A4/M4 in and out of London

Features

- Long Lease
- High Street Location
- Close to Transport Links
- Private Balcony
- Fantastic Condition
- No Onward Chain

Unity Lane, Hounslow, TW3



Total area (approx.): 57.7 sq. m (621.0 sq. ft)
Balcony area (approx.): 9.0 sq. m (96.8 sq. ft)