

for sale  
**£200,000** Freehold

**Paul  
Dubberley**



Legge Street West Bromwich B70 6HE

# Legge Street West Bromwich B70 6HE



## Property Description

DO YOU HAVE A PROPERTY TO SELL?

We offer FREE selling valuations

DO YOU NEED A MORTGAGE?

Our fully qualified mortgage experts offer mortgage & remortgage advice

## Entrance Hall

Having door to the side via shared entry and doors to lounge and dining room.

## Lounge

Having a double glazed window to the front elevation and central heating radiator.

## Dining Room

Having an internal window to the rear elevation, central heating radiator and stairs to the first floor and door to inner hallway.

## Inner Hallway

Having window to the rear elevation, door to the kitchen and rear garden.

## Kitchen

Having a double glazed window to the side elevation, fitted kitchen with a range of wall and base units, with worksurfaces over, stainless steel one and half bowl sink and drainer, tiling to splash prone areas, gas cooker point with cookerhood over, plumbing for washing machine and door to bathroom.

## Downstairs Bathroom

Having a double glazed window to the side elevation, fully tiled, with bath, low level WC, wash hand basin and central heating radiator.

## Landing

Having stairs from the dining room and doors to.

## Bedroom One

Having a double glazed window to the rear elevation and central heating radiator.

## Bedroom Two

Having a double glazed window to the front elevation and central heating radiator.

## Bedroom Three

Having a double glazed window to the front elevation and central heating radiator.

## Agent Notes

'There is a easement on the title, please enquire with the branch'.







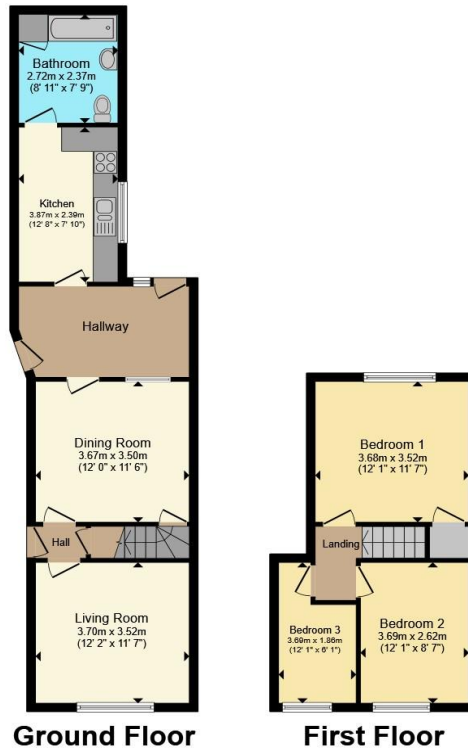
HERBS POWDER

BIO ORGANIC

Herbs Powder

JSSA1

ORGANIC



Total floor area 88.3 m<sup>2</sup> (951 sq.ft.) approx

This floor plan is for illustrative purposes only. It is not drawn to scale. Any measurements, floor areas (including any total floor area), openings and orientation are approximate. No details are guaranteed, they cannot be relied upon for any purpose and they do not form part of any agreement. No liability is taken for any error, omission or misstatement. A party must rely upon its own inspection(s). Powered by www.propertybox.io



To view this property please contact Paul Dubberley on

**T** 0121 525 2111  
**E** westbromwich@pauldubberley.co.uk

290 - 292 High Street  
 WEST BROMWICH B70 8EN

EPC Rating: D Council Tax  
 Band: A

**view this property online [PaulDubberley.co.uk/Property/PWB101854](http://PaulDubberley.co.uk/Property/PWB101854)**

1. MONEY LAUNDERING REGULATIONS Intending purchasers will be asked to produce identification documentation at a later stage and we would ask for your co-operation in order that there will be no delay in agreeing the sale. 2. These particulars do not constitute part or all of an offer or contract. 3. The measurements indicated are supplied for guidance only and as such must be considered incorrect. Potential buyers are advised to recheck measurements before committing to any expense. 4. We have not tested any apparatus, equipment, fixtures, fittings or services and it is in the buyers interest to check the working condition of any appliances.

Paul Dubberley is a trading name of Connells Residential which is registered in England and Wales under company number 1489613, Registered Office is Cumbria House, 16-20 Hockliffe Street, Leighton Buzzard, Bedfordshire, LU7 1GN. VAT Registration Number is 500 2481 05.

see all our properties at [www.pauldubberley.co.uk](http://www.pauldubberley.co.uk) | [www.rightmove.co.uk](http://www.rightmove.co.uk) | [www.zoopla.co.uk](http://www.zoopla.co.uk)

Property Ref: PWB101854 - 0003

