



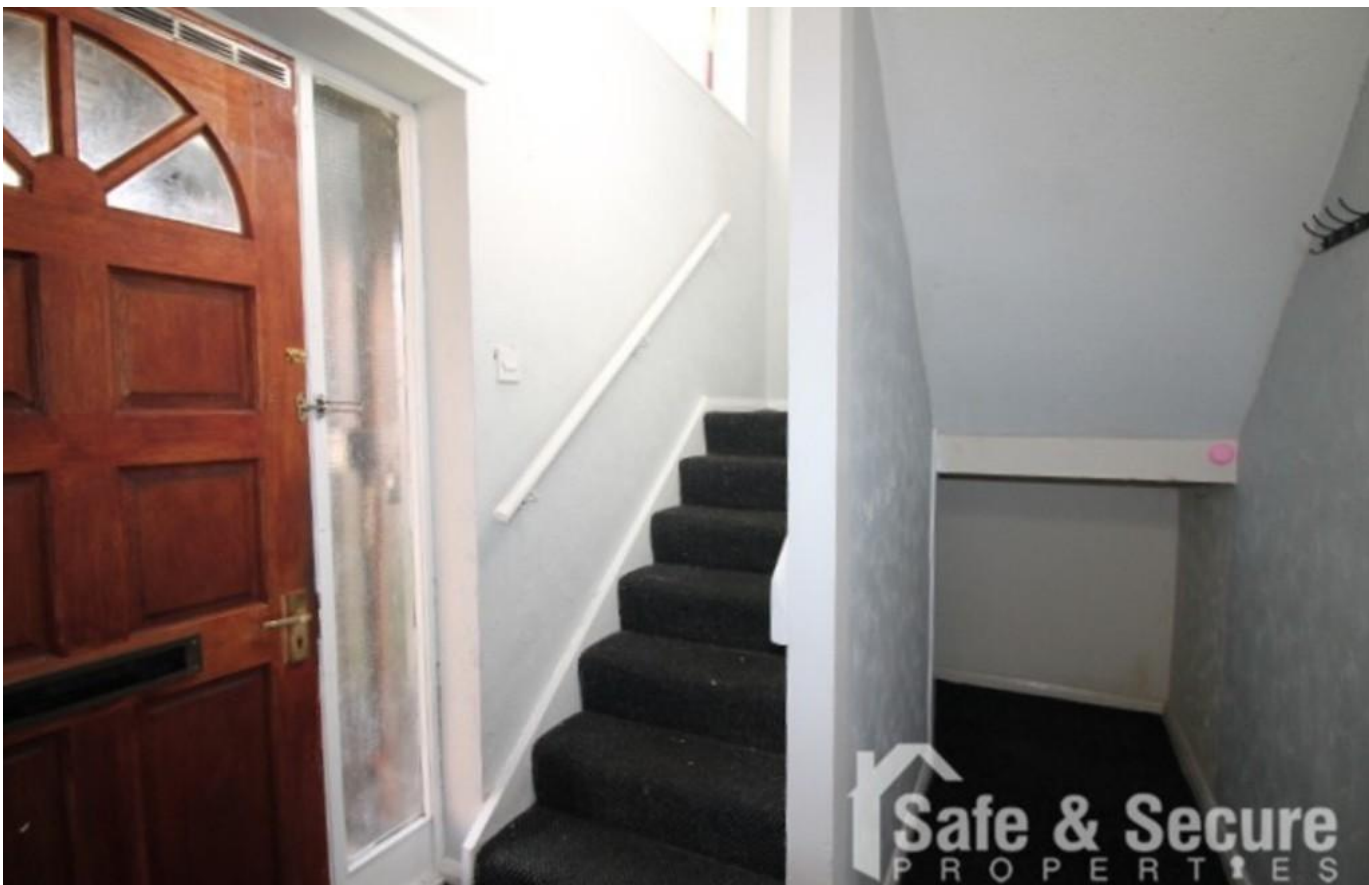
5 Lilac Court

Shildon
Durham
DL4 2DQ

£500 pcm

Two Bedrooms
Mid Terraced House
Close to Local Amenities and Transport
Links
Gardens Front and Rear
Vacant Possession
Viewing Recommended





Safe and Secure welcome to the market this market this Two Bedroom Mid Terraced House in the popular area of Lilac Court, Shildon. This spacious home benefits from gas central heating, and gardens front and rear. Close to local amenities and transport links, the property would suit a wide variety of buyers. Viewings recommended.

ENTRANCE HALL

Single glazed entrance door, double glazed window to front, staircase to first floor, understairs storage.

LOUNGE

10' 9" x 14' 7" (3.28m x 4.45m) Double glazed window to rear, telephone and television point, coving to ceiling, radiator.

DINING KITCHEN

16' 4" x 8' 4" (4.99m x 2.56m) Fitted wall and base units with coordinating work surfaces, tiled walls, gas cooker point, space for washing machine, single drainer sink, radiator, double glazed window to front.

REAR PORCH

Single glazed door to rear, storage room.

FIRST FLOOR LANDING

Access to roof space, combination boiler, two storage cupboards.



BEDROOM 1

10' 8" x 11' 8" (3.27m x 3.57m) Double glazed window to rear, coving to ceiling, radiator.

BEDROOM 2

14' 8" x 8' 8" (4.48m x 2.66m) Double glazed window to rear, radiator.

FIRST FLOOR BATHROOM

White 2 piece suite comprising of a panelled bath with shower over, pedestal wash hand basin, tiled walls, heated towel rail, double glazed window to front.

FIRST FLOOR SEPARATE W.C

Double glazed window to front, low level w.c.

FRONT GARDEN

Laid mainly to lawn, fenced boundaries.

REAR GARDEN

Laid mainly to lawn, paved area, fenced boundaries, gates access.



Local Authority
Council Tax Band
EPC Rating

Durham County Council

A

D



Houghton le Spring
24-25 Westbourne Terrace
Houghton Le Spring
Tyne And Wear
DH4 4QT

Contact
0191 3854477
info@safeandsecureproperties.co.uk
o.uk
safeandsecureproperties.co.uk

Agents Note: Whilst every care has been taken to prepare these particulars, they are for guidance purposes only. All measurements are approximate and are for general guidance purposes only and whilst every care has been taken to ensure their accuracy, they should not be relied upon and potential buyers/tenants are advised to recheck the measurements.