



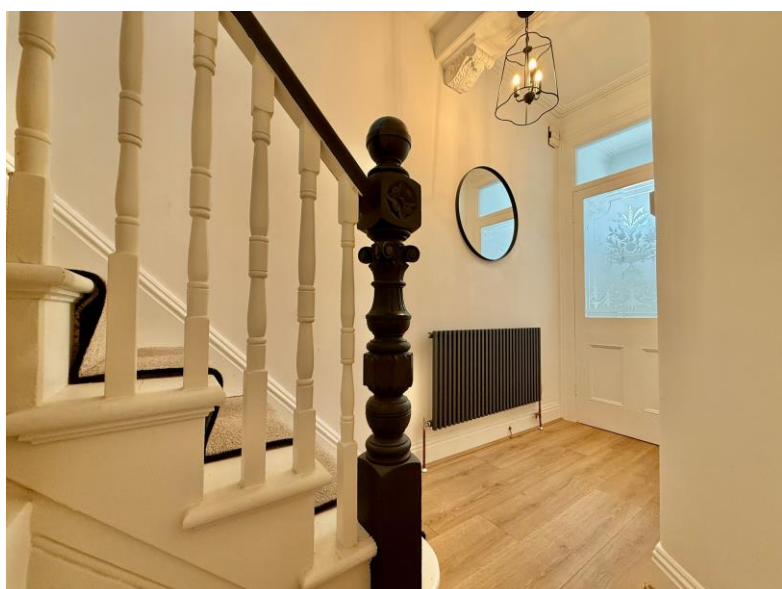
Falcon

01752 600444

29 Endsleigh Park Road

Peverell, Plymouth, PL3 4NH

Guide Price £325,000 - £350,000





In Brief

Beautifully Presented Period Home with Garage in Sought-After Peverell

Reception Rooms	Fabulous living room with separate dining room.	Parking	Garage + on street parking
Bedrooms	3 bedrooms	Council Tax	C
Heating	Gas central heating		
Area	942 sq ft		
Tenure	Freehold		

Description

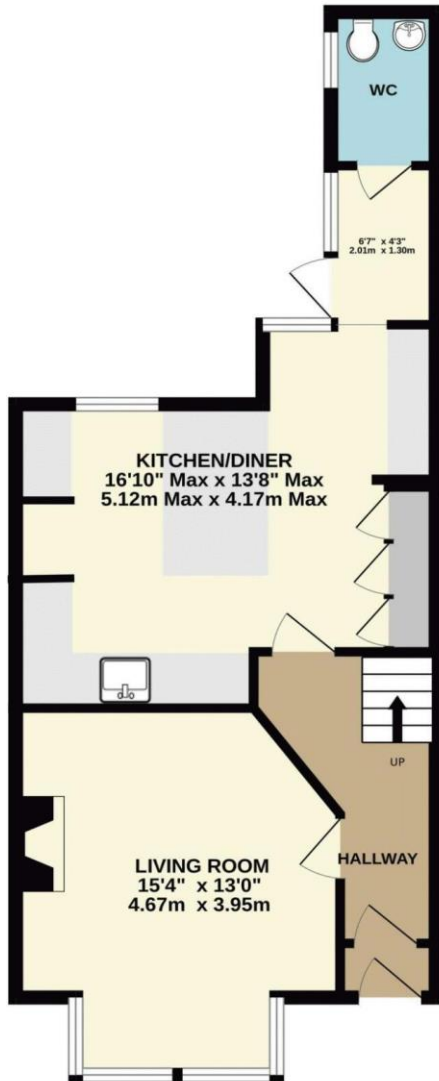
Beautifully renovated and immaculately presented, this stunning three-bedroom family home is situated in the ever-popular Peverell area, close to Central Park, Hyde Park shops and excellent local schools. Retaining attractive period features, the property has been thoughtfully and comprehensively updated to create a stylish home ready to move straight into. The welcoming hallway leads to a bright bay-fronted living room with an attractive fireplace and original ceiling detailing. The real heart of the home is the large kitchen / diner with exceptional shaker-style units, finished in a contemporary porcelain colour with Quartz worktops, an impressive breakfast bar, integrated dishwasher and an excellent range of storage. A rear hallway provides access to the garden and a convenient downstairs WC. Upstairs are three well-proportioned bedrooms, including two generous doubles and a nice single together with a luxurious contemporary shower room featuring a walk-in rainfall shower and vanity unit. Outside, the enclosed rear garden has been designed for low maintenance, offering a private patio seating area with rear access and the added bonus of a garage. A truly stylish property in one of Plymouth's most sought-after locations, early viewing is highly recommended.

Need A Mortgage?

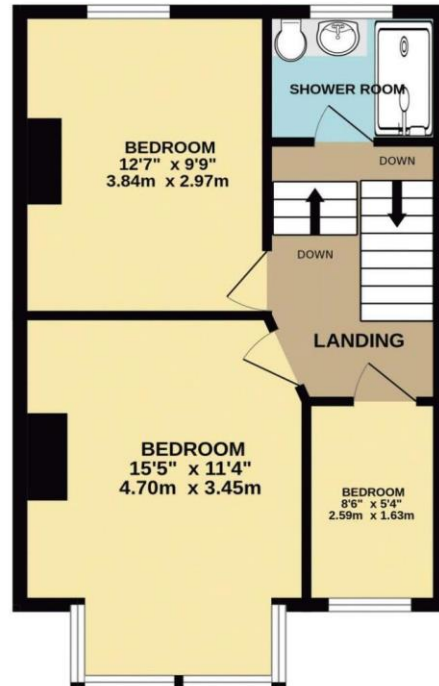
Don't pay more than you need to for your mortgage advice:
ours is only £195 paid when you move!

Floor Plans

GROUND FLOOR
511 sq.ft. (47.4 sq.m.) approx.



1ST FLOOR
431 sq.ft. (40.0 sq.m.) approx.



TOTAL FLOOR AREA : 942 sq.ft. (87.5 sq.m.) approx.
Made with Metropix ©2023





We have not tested any apparatus, equipment, fixtures and fittings or services and so cannot verify that they are connected, in working order or fit for the purpose. Neither have we had sight of the legal documents to verify the Freehold or Leasehold status of any property; or sight of any consents, including Planning Permissions, building Regulations and Breaches of Covenants that may be required for alterations to the property. A buyer is advised to obtain verification from their Solicitor and/or Surveyor. Items shown in photographs are NOT included unless specifically mentioned within the Sales Particulars. Any floor plans on these details are not drawn to scale and are intended for guidance only

Falcon Property is an Introducer to Bradleys Financial Management Ltd. They are appointed representatives of Sesame Ltd who are authorised and regulated by the Financial Services Authority. Bradleys do not charge for mortgage advice, however a fee paying option is available. Typical fee is £195. Bradleys Financial Management: 16 Mannamead Road, Mutley, Plymouth, PL4 7AA

Your home may be repossessed if you do not keep up repayments on your mortgage.

Score	Energy rating	Current	Potential
92+	A		
81-91	B		82 B
69-80	C		
55-68	D	61 D	
39-54	E		
21-38	F		
1-20	G		

