

Balmore Street, N19

£625,000

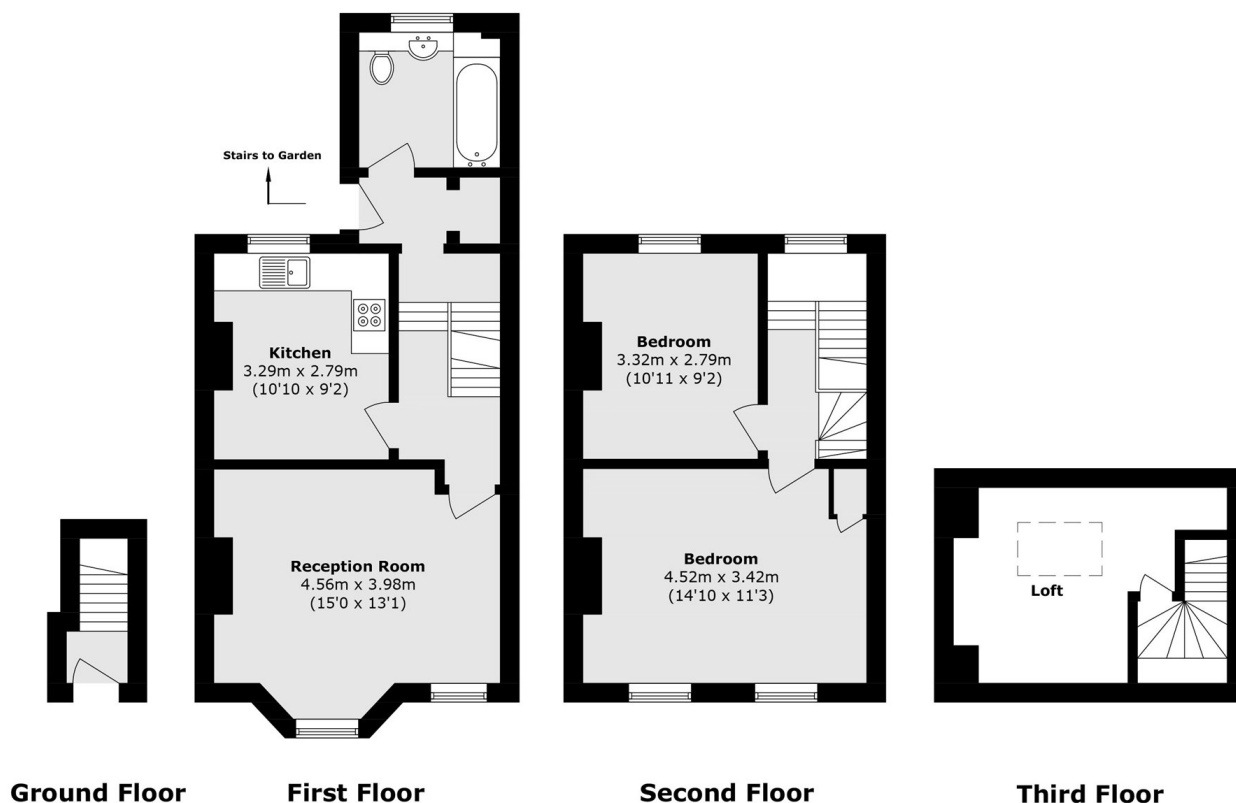
A generously sized split-level two bedroom apartment set within an attractive Victorian conversion. The property offers a separate reception room and kitchen, ample storage throughout and direct access to a shared garden.

Balmore Street is within easy reach of the local independent shops and cafés on Swains Lane, Highgate Village, and the green open spaces of both Hampstead Heath and Waterlow Park.

Features

- Two Bedrooms
- Split-Level
- Loft Storage
- Shared Garden
- Leasehold
- Great Location

Balmore Street, London, N19



Ground Floor

First Floor

Second Floor

Third Floor

Total area (approx.): 72.9 sq. m (784.6 sq. ft)
(Excluding Loft)