



Kent Road, Windlesham

**£585,000**



## Kent Road, Windlesham, Surrey GU20 6JF

This extended three bedroom bungalow in Windlesham is in need of modernizing and just a short walk of the Field of Remembrance playing fields.

### FEATURES

- No onward chain
- 1406 sq. ft
- Single storey bungalow
- Scope to improve and add value
- Short walk to Windlesham Field of Remembrance
- Walking distance to choice of local pubs

### ACCOMMODATION

- Porch
- Sitting/dining room
- Conservatory
- Cloakroom
- Kitchen
- Three bedrooms
- Wet room

### OUTSIDE

- Driveway
- Vegetable patch
- Rear garden with patio
- Garage

### EPC RATING

D

### LOCAL AUTHORITY/COUNCIL TAX

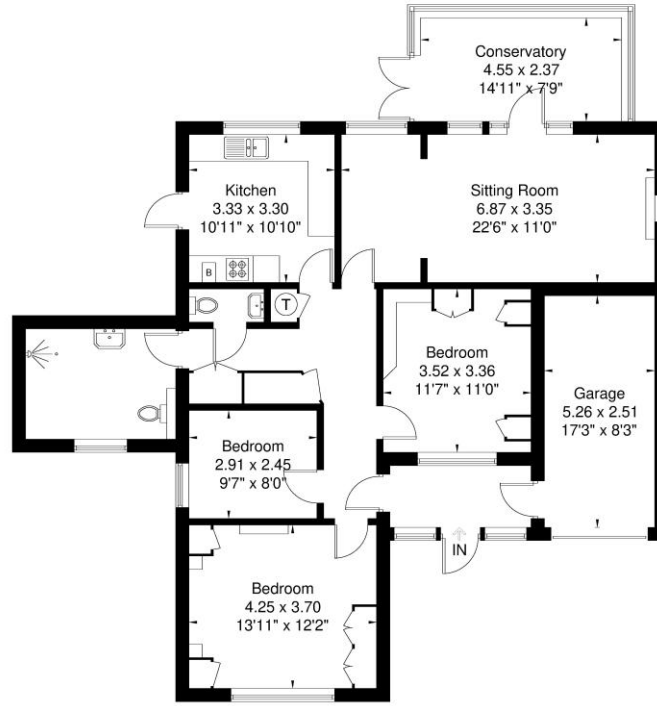
Surrey Heath – Band E





**Kent Road**

Approximate Gross Internal Area = 130.7 sq m / 1406 sq ft



Ground Floor

Illustration for identification purposes only,  
measurements are approximate, not to scale.

**Disclaimer:** We wish to inform prospective purchasers that we have prepared these sales particulars as a general guide. We have not carried out a detailed survey, nor tested the services, appliances and specific fittings. Room sizes are approximate and rounded: they are taken between internal wall surfaces and therefore include cupboards / shelves, etc. Accordingly, they should not be relied upon for carpeting, curtains / blinds and kitchen equipment, whether fitted or not, are deemed removable by the vendor unless specifically itemized within these.



The Old Dairy, 7 Updown Hill, Windlesham, Surrey GU20 6AF  
enquiries@newtonrowe.co.uk | 01276 986900