



📍 13 King Street, Melksham, Wiltshire, SN12 6HB

🏠 Price Guide £300,000

Located just off Melkshams historic Market Place this attractive 3 bedroom three storey town house is conveniently located and retains some historical features throughout. Fall out of the front door and your in the heart of Melkshams historical Market Place.

- Semi Detached Period Town House
- 3 Bedrooms
- Double Glazed
- Gas Central Heating
- Period Features
- Private Rear Garden
- Town Centre Location
- Grade II Listed

🏡 Freehold

🏠 EPC Rating



Located just off Melkshams historic Market Place this attractive 3 bedroom three storey town house is conveniently located and retains some historical features throughout. Fall out of the front door and your in the heart of Melkshams historical Market Place. The property, Grade II listed has a wealth of period features and charm over its three floors with to the ground floor an entrance hallway featuring black and terracotta floor tiles, stairs to the first floor with an under stairs cupboard and doors to the rear garden, living room and dining room. The living room, located to the front has a lovely stone fireplace and inset log burner. The dining room also has a tiled floor, window to the rear and doorway to the kitchen which is fitted with base units, beech work tops, built in cooker and hob, space for a fridge, two windows to the side creating a naturally light room, flag stone flooring and a door to the rear lobby. This lobby has a door to the garden and a further door to the utility/cloakroom which has a W.C, sink and space for a washing machine. To the first floor is the main bedroom and family bathroom which has a four piece suite including a freestanding bath and exposed floor boards. This bedroom has a sash window to the front, cast iron feature fireplace, dresser units built into either side of the fireplace and exposed floor boards. The first floor landing has a flight of stairs to the top floor bedrooms, bedroom two having dual aspect windows front and side, the side being stone mullion, cast iron feature fireplace and en suite facilities which include a W.C and sink, bedroom three, also a double is to the rear. The property is double glazed and warmed by mains gas fired central heating. Externally the front garden has cast iron railings enclosing a small garden area. The rear is private and enclosed by a brick wall with a gate to a communal path taking you into market place. The garden is laid to patio with established bushes and shrubs

Melksham

Melksham is an historic former market town with a variety of shopping including a Waitrose, leisure and educational facilities, well served by good roads and is only 12 miles south of the M4 motorway. Trains run from Melksham Station to Swindon, Southampton, Frome and Cheltenham. Buses serve Bath, Chippenham, Devizes and Trowbridge. National Express Coaches run direct services to London. The Georgian city of Bath offers a wealth of cultural and recreational points interests and is only 13 miles to the west and Salisbury, 34 miles to the south. Communications in the area are excellent with train services to London Paddington from Chippenham, Pewsey and Westbury. The M3 /4 also gives easy access to the motorway network and to Heathrow and Gatwick airports.

Property information

Mains Services

Council Tax Band: C

Freehold

Gas Central Heating

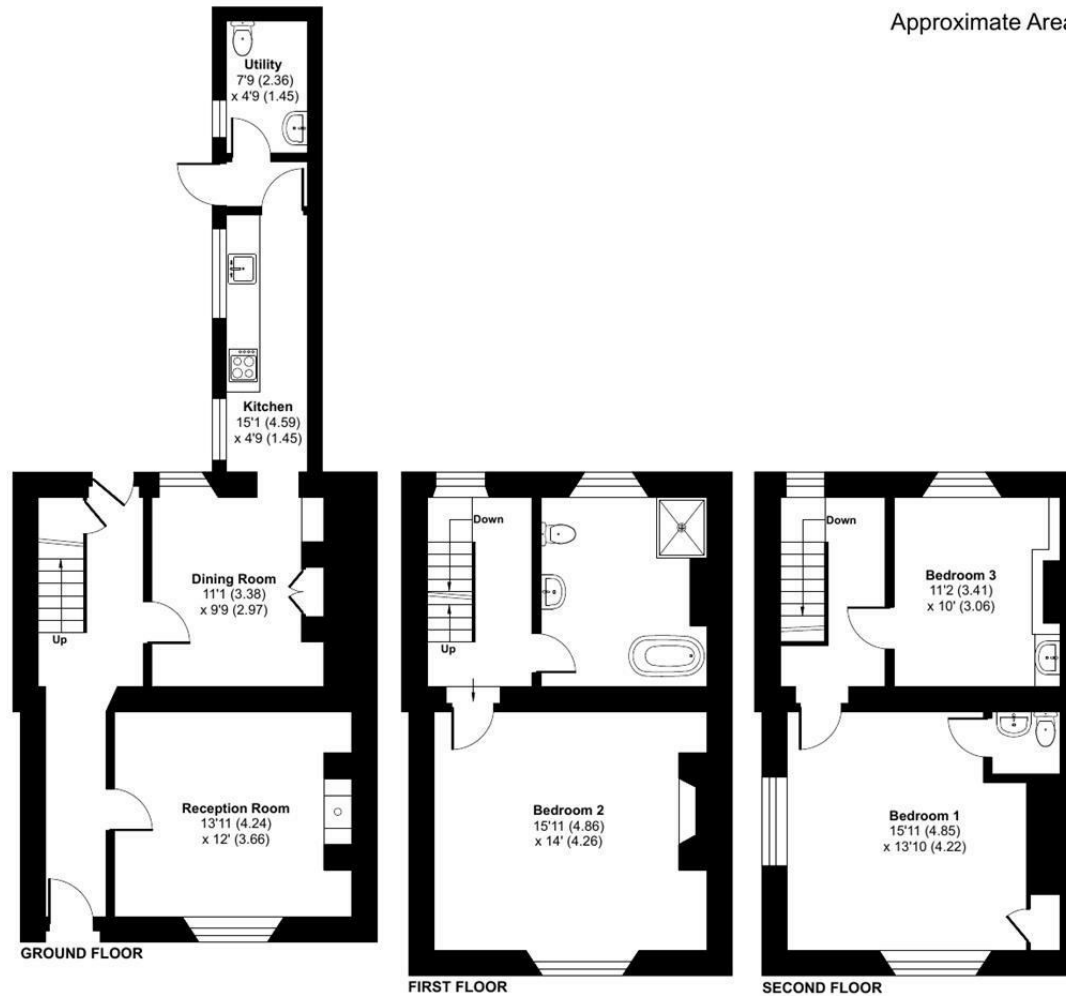
Town Centre Location



King Street, Melksham, SN12

Approximate Area = 1436 sq ft / 133.4 sq m

For identification only - Not to scale



Floor plan produced in accordance with RICS Property Measurement 2nd Edition, Incorporating International Property Measurement Standards (IPMS2 Residential). © ntechcom 2025. Produced for Strakers. REF: 1269611

Disclaimer These particulars, whilst believed to be accurate are set out as a general outline only for guidance and do not constitute any part of an offer or contract. Intending purchasers should not rely on them as statements of representation of fact, but must satisfy themselves by inspection or otherwise as to their accuracy. No person in this firm's employment has the authority to make or give any representation or warranty in respect of the property. All measurements and distances are approximate only. Your home is at risk if you do not keep up repayments on a mortgage or other loan secured on it.