

## Wharf Road, N1

£900,000

This fantastic two bedroom, two bathroom apartment benefits from a large open-plan reception room with modern high-specification kitchen and a large balcony overlooking the City Road Basin. Wooden floors and large windows span the entirety of the flat allowing lots of natural light to flood the space.

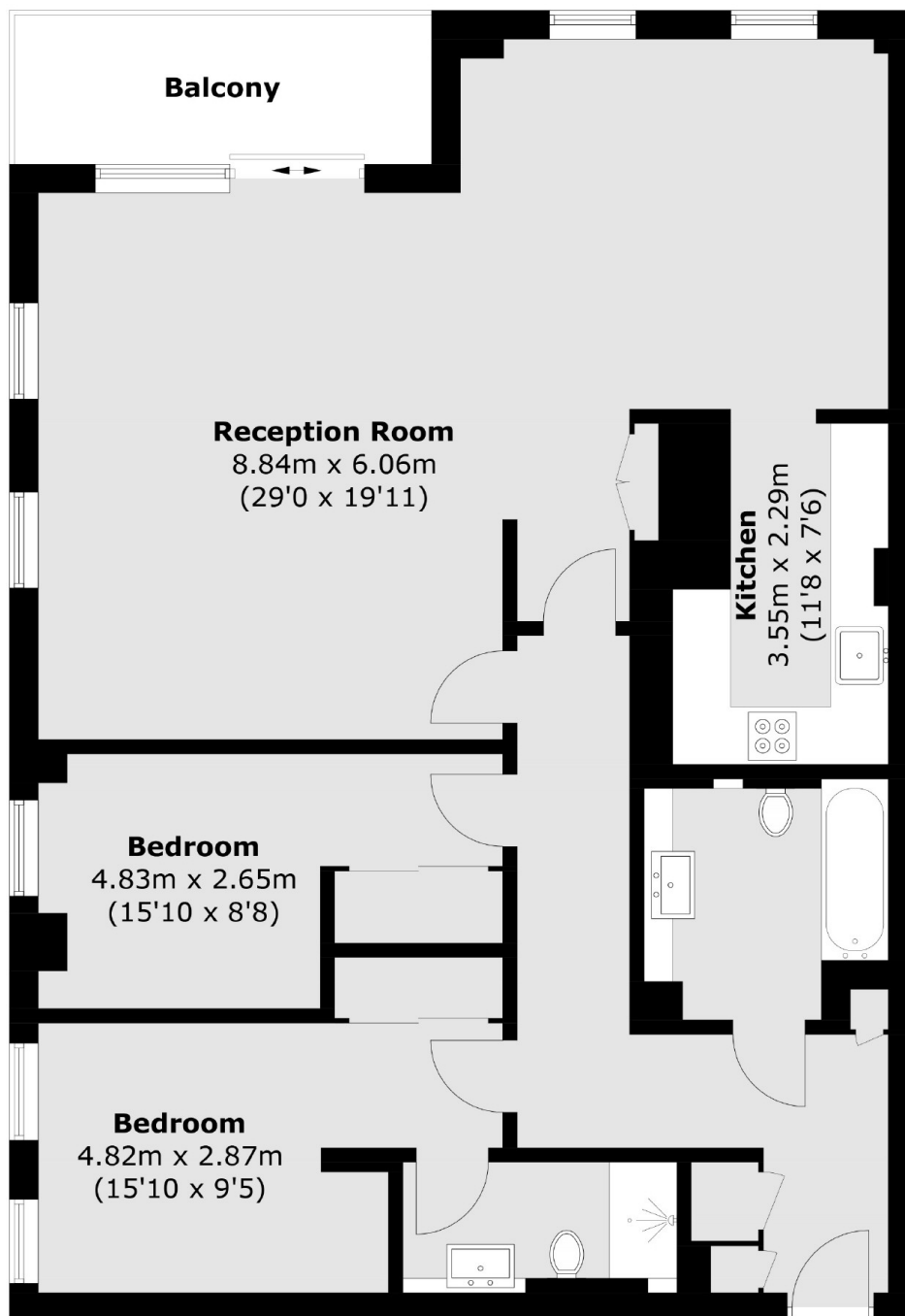
The development is within easy walking distance of Angel and Old Street Underground stations and has an attractive portered lobby. The property has an allocated parking spot in a secure gated lot, allows pets with permission.

The property is in a fantastic location. It is a short walk to Upper Street and within close proximity of Shoreditch, Clerkenwell and The City. The area is very well served by public transport. Angel tube station and Old street station (Northern Line) are both half a mile away.

### Features

- Two Bedrooms
- Two Bathrooms
- Spacious Modern Interiors
- Long Lease
- Parking
- Concierge
- Basin View

# Wharf Road, London, N1



Total area (approx.): 108.7 sq. m (1,170.0 sq. ft)  
Balcony : 6.7 sq. m (72.1 sq. ft)

**Dexters**

Islington  
76 Upper Street  
Islington  
London  
Sales  
020 7483 6373

Energy Rating: C. We aim to make our particulars both accurate and reliable. However they are not guaranteed; nor do they form part of an offer or contract. If you require clarification on any points then please contact us, especially if you're traveling some distance to view. Please note that appliances and heating systems have not been tested and therefore no warranties can be given as to their good working order.

 **RICS** | Regulated  
Estate Agent  
and Letting Agent

dexters.co.uk