

HUNTERS[®]

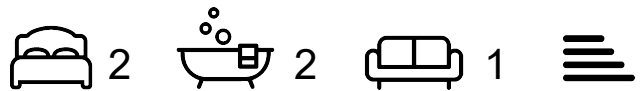
HERE TO GET *you* THERE



St. George Wharf

London, SW8 2LP

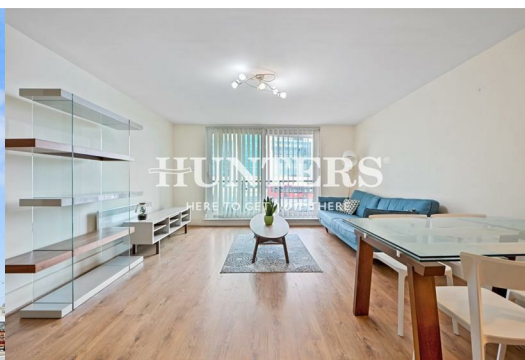
£2,695 Per Month



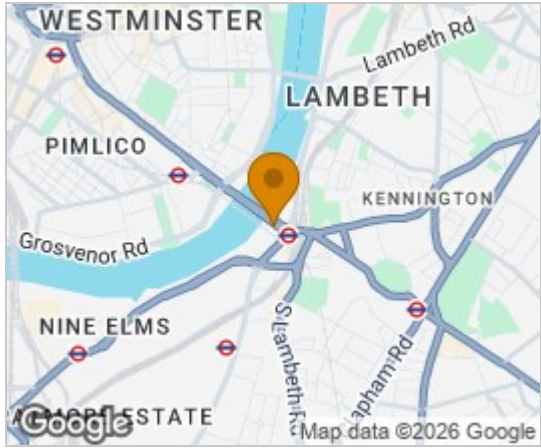
Rarely available is this stunning two bedroom apartment, set at the front of the highly sought after St George Wharf development. The property offers an excellent position and aspect within this excellently located riverside development, St. George Wharf. Comprising a large curved reception, a fully fitted and modern kitchen, two spacious double bedrooms, two modern bathrooms (one of which are en suite), and a balcony leading from the living room.

This apartment benefits from the fantastic transport links afforded by this very well kept complex by The River Thames. St George Wharf offers on site riverside bars and restaurants such as Waterfront London, The Riverside, Four Degree and Pop Art Sushi as well as direct access to Vauxhall Underground Station on the Victoria Line.

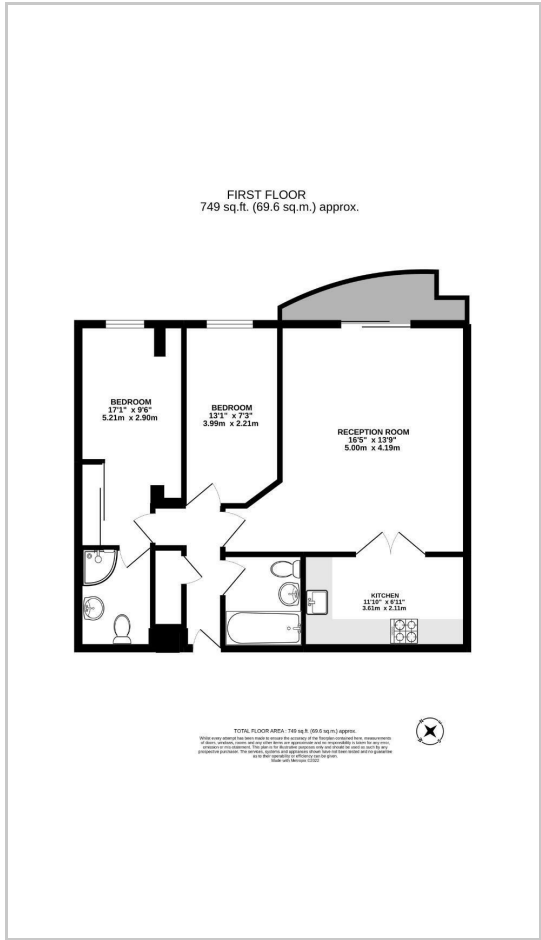
For additional convenience other on site outlets include Tesco Express, Pret a Manger, Hudson's Dry Cleaners, Riverside Medical Centre & Dental Spa and more.



Area Map



Floor Plans



Energy Efficiency Graph



These particulars are intended to give a fair and reliable description of the property but no responsibility for any inaccuracy or error can be accepted and do not constitute an offer or contract. We have not tested any services or appliances (including central heating if fitted) referred to in these particulars and the purchasers are advised to satisfy themselves as to the working order and condition. If a property is unoccupied at any time there may be reconnection charges for any switched off/disconnected or drained services or appliances - All measurements are approximate. **THINKING OF SELLING?** If you are thinking of selling your home or just curious to discover the value of your property, Hunters would be pleased to provide free, no obligation sales and marketing advice. Even if your home is outside the area covered by our local offices we can arrange a Market Appraisal through our national network of Hunters estate agents.