

Victoria Yard, Victoria Row, Canterbury, Kent, CT1 1GZ

£1,200 PCM



Victoria Yard

Victoria Row, Canterbury CT1 1GZ

This lovely town house is situated in a secure development and is in the heart of the City Centre. The property is spread over three floors and comprises of a ground floor ensuite bedroom. Move up to the first floor and there is an open plan sitting room/kitchen with integrated appliances. There is a further bedroom with an ensuite bathroom on the second floor. The property has an allocated parking space for one car.

Rent is £1200 per month - EXCLUSIVE of all utilities

Deposit is £11384 (equal to 5 weeks rent)

This can be paid anytime, until your tenancy begins (EXCLUDING Holding Deposit)

Council tax band: D

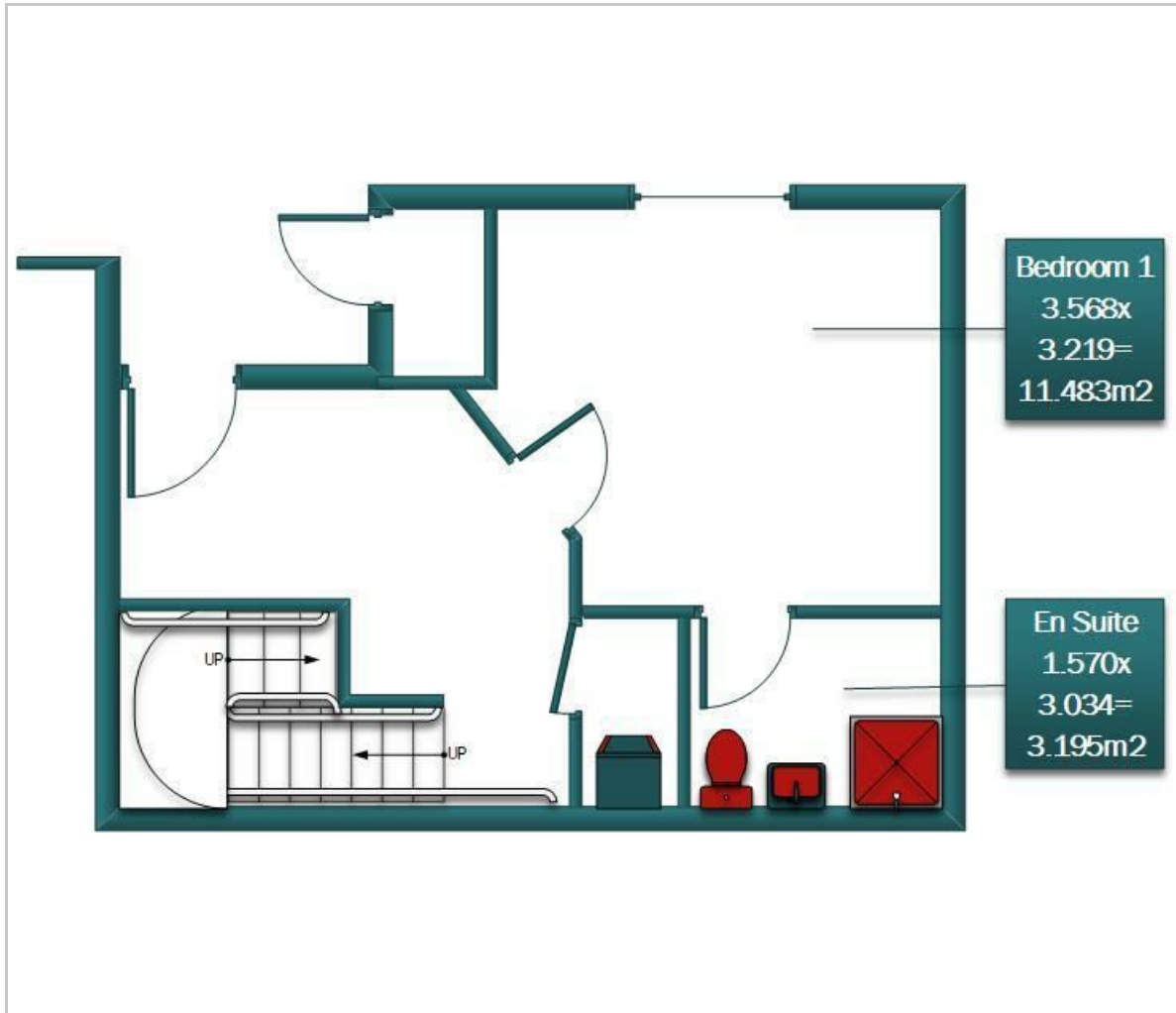
All viewings are strictly by appointment only.

Please refer to the fee's tab on our website (www.sallyhatcher.co.uk) for all information on fee's and deposit options





Floor Plan



Viewing

Please contact us on 01227 733888 if you wish to arrange a viewing appointment for this property or require further information.

These particulars, whilst believed to be accurate are set out as a general outline only for guidance and do not constitute any part of an offer or contract. Intending purchasers should not rely on them as statements of representation of fact, but must satisfy themselves by inspection or otherwise as to their accuracy. No person in this firm's employment has the authority to make or give any representation or warranty in respect of the property.

Area Map



Energy Efficiency Graph

